

Become a member of ELIA

You can help preserve one of Lawrence's most unique and historic neighborhoods. As a resident, you can become a voting member of only \$1. As neighbors, joining together, we can make a difference on traffic problems, inappropriate development and other issues that make us a better community.

Non-residents can join ELIA by becoming Associate Members. Associate Members receive the East Lawrence News and discounts on advertising placed in the News.

Name _____

Address _____

Lawrence, Kansas ZIP _____ Phone _____

Membership dues enclosed Resident [\$1.00] - Associate [\$35.00]

East Lawrence Improvement Assoc.
P. O. Box No. 442393
Lawrence, Kansas 66044-2393



BULK RATE
U. S. Postage
PAID
Permit No. 170
Lawrence, KS 66044

EAST LAWRENCE RESIDENT
HARLENE GRANT
PO BOX 708
LAWRENCE KS 66044 0108



JANUARY 1997

CDBG funds and New Officers, Board

Community Development Block Grant Funds

The East Lawrence Improvement Association has applied for Community Development Block Grant [CDBG] funds for the coming year.

In addition to operating funds to administer programs, the ELIA requested funds for the following programs, most of which continue programs sponsored in prior years:

- Lighting in targeted alleys
- Paving of deteriorated alleys
- Brick sidewalk restorations
- Brick street conversion
- Home improvement grants

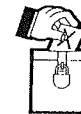
Alleys - In the past ELIA, in cooperation with residents, paid for installation and operation of pole lighting for alleys. We want to continue that program. In addition, we would like to pave one of the alleys between Pennsylvania and Delaware or New York and New Jersey, in the 1400 block. These alleys are rutted, in poor repair and were damaged by flooding in 1993. If these grants are approved, the ELIA will work with residents to select and pave the alley in the worst condition or which needs this improvement the most.

Sidewalks and Streets - We would like to continue the long standing program of restoring selected brick sidewalks to their original condition. The ELIA has completed a number of sidewalk stretches over the last few years. The ELIA would also like to continue reversion of selected residential streets to their original brick surfaces. If this grant is approved, the ELIA will sponsor a volunteer work day this

summer to strip asphalt from a residential street identified by City Public Works staff as having a good brick street base.

Home improvements - ELIA would like to reinstate a program tried a number of years ago designed to help East Lawrence residents who are unable to make limited essential improvements to their homes. The goal is to improve housing stock in East Lawrence. We have asked for a limited amount of money for this purpose.

Recipients would need to be income qualified owners of housing in East Lawrence, which they occupy, and improvement grants would be restricted to essential repairs that increase the livability of the residence, e.g. weatherization improvements or upgrading of heating or other systems.

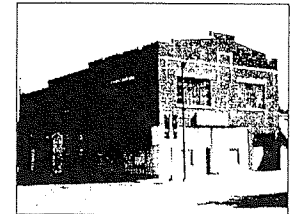


New Officers and Board

The East Lawrence Improvement Association elected new officers and board members for 1996-1997. The new officers are:

- Fadra Andrews, President
- Prisella Adams, Vice President
- Dana Hurlburt, Secretary
- Shannon Murphy, Treasurer

These officers will serve until the next annual meeting of ELIA in October 1997. A complete list of officers and Board members is on page 3.



The Stable

As most of you know, the Historic Resources Commission ultimately ruled that partial demolition of the Stable building can go forward. Everyone awaits the filing of a new plan from the developer and Borders to see what additional concessions, if any, will be made to preserving more of the Stable building. The modified proposal that prompted the state and local historical entities to approve demolition, added a number of changes to the exterior appearance of the new structure and will attempt to incorporate two of the walls of the existing structure.

Since some of the objections of residents were addressed in the modified proposal, it is hoped others will be address in the final site plan.

Contents

Bucks for Books!	Page 3
CDBG funds	Front
CDBG Liaison	Page 3
Be a Member!	Back
Mass Transit	Page 2
New Officers	Front, Page 3
School Alert!	Page 3

Mass Transit

Hello. I am Pat Slick. I was recently accepted as a Volunteer In Service To America (VISTA) and was assigned to Douglas County Area Transportation (DCAT) as an advocate.

In 1992, the Lawrence City Commission, under mayor John Nalbanian, offered \$100,000 to anyone who could put together a plan for coordinated public transportation services in our County.

The Douglas County Community Transportation Coordinating Council (DCCTCC), having been formed in 1986 as a not-for-profit organization, put together a plan which created DCAT.

The goal of DCCTCC is "to advocate for improved community transportation in Douglas County through improved coordination of transportation services and advocacy for an adequate level of community service to meet the needs of Douglas County citizens with particular emphasis on the needs of those who are transportation disadvantaged".

DCCTCC members included most of the social service agencies which provide transportation services in Douglas County as well as Kansas University and the Lawrence Bus Company, and the city of Lawrence.

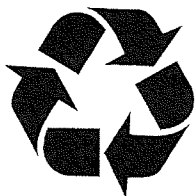
In 1994 the Lawrence City Commission authorized the \$100,000 in funds to DCAT to provide public transportation from March through December. With that budget, DCAT provided 7,000 demand-response rides. In 1995 with a \$163,000 budget, DCAT provided over 12,000 rides. This year with a \$248,000 budget, they are on track to provide over 21,000 rides. In 1997 with a budget of \$337,000 they expect to provide from 40,000 to 50,000 rides.

People use DCAT for shopping, doctor's visits, going to sporting events, and for a myriad of other personal and business matters including going to and from their jobs.

They ask for a twenty-four hour notice but sometimes less notice is needed to book a ride for an individual. DCAT is a door-to-door service. The busses are fully accessible to those persons with disabilities if requests for lift equipment

are made at the time of scheduling. The fares are one-dollar a ride for target individuals and five dollars to the general public.

Your agency can serve as an official certifying body for reduced fare eligibility. Eligible consumers would only pay one dollar per ride. Children under twelve must be accompanied by an adult and children under four may ride free. Cash fares can be deposited in the fare box or a bus pass may be purchased. The services are available Monday through Friday 7 AM until 6 PM and on Saturdays from 10 AM until 5 PM. As yet, they do not have Sunday and holiday services. Reservations may be booked Monday through Friday from 8 AM until 4 PM. We cannot use an answering machine to make reservations and reservations will not be made the Friday following Thanksgiving Day. And the service is presently limited to four individual rides per day.



Our city commission recently hired a firm from Philadelphia to review our present transportation systems, which involve DCAT and other social service agencies that provide rides. This firm will, with your help, gather your agency's information about your transportation budget, if you have one, and the numbers of rides you provide. They will want to know what your views are regarding the needs for transportation by your clients in the future, as well as what you see as the limits in providing for those needs.

After the firm gathers all the information from your agency and other service providers they will present the information to policy makers and government officials, who will then determine whether or not there is an opportunity to implement a coordinated transportation system here in Lawrence. If it is

determined that such a system can be created, they will then determine how it can be created and who will run it and how it will be financed. The results of their findings should be available before the next city commission elections in the spring.

A demand-response system (the type currently used), which means that one person is picked up at a time and taken to one particular destination, is quite inefficient. Often, we cannot pick up others during one demand-response ride because the next rider is far away from where the particular bus is going. With our present system of scheduling, our busses are not being used to their capacity and people have to be turned down when they request a ride. Another obstacle to access this service is limited hours of operation, so people who work other than the times of our operations cannot get to and from their jobs; thus the need for a more expanded system.

Because DCAT is the only source that actually tracks rider demands in Lawrence, it is important that everyone who needs a ride attempts to call for one whether it is available or not. As the readership statistical data such as purpose for rides, numbers of rides, and turn downs speak volumes when attempted to show need.

Now is the time to use our system and to let officials know how we feel because this may very well be the last study and chance to have a fixed-route system here in town. The city commissioner would like to have a plan for the people of Lawrence to look at before the next city commission elections. The environmental improvements resulting from use of public transportation and depending less on the private auto are obvious. I urge all of you to let your voice be heard by telling the commissioner we want a modern updated fixed-route bus system.

I would like to keep you posted on our progress and will be in touch in the near future or you may phone me at 749-2287. Working together we can reach our goals.

Calendar	
Jan. 17	Martin Luther King Chili Feed 5:30 p.m. New York School
Jan. 21	Board Meeting New York School 6:30 p.m.

Bucks for Books

The East Lawrence Improvement Association recently launched a program to help add books to the library at New York Elementary School.

The NY School was extensively remodeled and expanded last year. One of the new additions is a larger library room. To help fill the new shelves, the Board of ELIA has advertised a money drive, with the goal of collecting \$1,500 toward the purchase of new books.

The school librarian tells us it costs an average of \$15 per book, through the source she uses. The librarian asks for cash donations, because the school would prefer to buy books from the list of books they have developed from student and parent requests. In addition, the library buys books from a special source that supplies books with heavy duty covers, a feature any parent of small children will appreciate.

As of the date the Newsletter went to print we have received over \$500 toward the goal.

Bucks for Books !

Come to the Martin Luther King Chili Feed, on the evening of January 17, to see how close we came to our goal.

Elementary School Closings

The Lawrence School Board is looking at closing several elementary schools. Those schools are Grant, Cordley, East Heights and Riverside. Allegedly this is prompted by a budget shortfall of 1.6%. It appears the Board is actively considering few other alternatives to the drastic step of closing schools. Not surprisingly, two of these schools are east of Massachusetts, one is just one block off Massachusetts and the remaining one is on North Iowa.

It appears students displaced by these closings would be squeezed into Centennial and Pinckney schools

Outside of the question of whether closing this many schools is the best way to make up such a small shortfall, increasing numbers of parents and other residents are asking why these particular schools have been targeted and what effect the dislocation of students will have on all student in the district.

If this controversy causes you concern, how do you make your wishes known?

The Board will conduct a number of public meetings to discuss these potential closings. The locations and times:

Jan. 13, School District Offices
Jan. 15, East Heights School
Jan. 16, Cordley School
Jan. 21, Riverside School
Jan. 23, Grant School

All meetings start at 7pm. Show up and voice your concerns.

If you cannot attend, call one of the School Board members:
George Crawford, 842-1490
Mary Loveland, 842-9333
John Tacha, 843-7136
Renee Karr, 843-0808
Carol Linhos, 749-2775
Maley Wilkins, 842-7316

Board Member Kerry Altenbernd has stated he does not support closing schools.

ELIA Board and officers

President Fadra Andrews [841-2834]
V.P. Prisella Adams [843-2114]
Sec. Dana Hurlburt [749-4843]
Trsr. Shannon Murphy [843-0123]

Board

Prisella Adams [843-2114]
Fadra Andrews [841-2834]
Melissa Arnett [841-3802]
Rand Gaston [749-2317]
Karen Hawk [832-2580]
Lori Hinrichsen [865-1404]
Dana Hurlburt [749-4843]
Jim Hurlburt [749-4843]
Jim McCrary [841-8370]
Jim Power [749-2549]
Shelle Rosenfeld [749-4165]
Barry Shalinsky [842-1953]
John Swift [843-0123]
Bill Wachspress [865-1404]
K. T. Walsh [749-2549]

Neighborhood Coordinator

Bob Kennedy [832-2506]

Volunteer opportunity

The ELIA Board appointed two representatives to outside groups important to East Lawrence. Barry Shalinsky is our representative to New York School. Jim McCrary is our representative to the Lawrence Assoc. of Neighborhoods [LAN].

We need volunteers to represent us on the Community Development Advisory council This is the group that screens the CDBG grant applications and recommends to the City which community development projects should be funded.

This position requires many evening meetings, especially in the next few months as that council goes over the CDBG grant applications. If you are interested in helping in this area, contact any board member.

Become a member of ELIA

You can help preserve one of Lawrence's most unique and historic neighborhoods. As a resident, you can become a voting member of only \$1. As neighbors, joining together, we can make a difference on traffic problems, inappropriate development and other issues that make us a better community.

Non-residents can join ELIA by becoming Associate Members. Associate Members receive the East Lawrence News and discounts on advertising placed in the News.

Name _____
 Address _____
 Lawrence, Kansas ZIP _____ Phone _____

Membership dues enclosed Resident [\$1.00] - Associate [\$35.00]

East Lawrence Improvement Assoc.
P. O. Box No. 442393
Lawrence, Kansas 66044-2393



EAST LAWRENCE RESIDENT
 MARGENE SWARTS
 PO BOX 708
 LAWRENCE KS 66044-0708



APRIL 1997

Good neighbor wins!

New Hampshire development

Despite concerted efforts of two other developers, Berkley Plaza prevailed in the competition to provide leased space to the city for use of the municipal court. Although Berkley Plaza worked on this development for a year and had revealed all its plans to the city, it found itself in a "bidding war" with the other developers who appeared late in the game, proposing rival plans for the court building - one in the same block as the Berkley Plaza development, the other on East 11th.

Berkley Plaza sought out East Lawrence residents early on, seeking input from immediate neighbors and ELIA. Scotch has earned a reputation for quality developments that fit into the Downtown and East Lawrence environments. Its Berkley Plaza development in the 1000 block of Massachusetts/New Hampshire is an excellent example of a landowner who achieves its development objectives

Contents	
Congrats	Page 3
Lawrence Art Ctr	Page 3
Mass transit	Page 2
Razing church	Page 2
South Park	Page 3

while fitting into the unique landscape of Downtown Lawrence and not clashing with adjoining neighborhoods.

Berkley Plaza's proposed building follows that tradition. In addition to designing a building that blends well with the architecture along New Hampshire Street, the developer also incorporates the Depression-era gasoline station at 10th and New Hampshire into the development in a creative and attractive way.

When members of the ELIA and neighbors of this development first met with Berkley Plaza, a number of concerns were expressed to Jeff Shmalberg, their Vice President, including how parking would be built in the alley, excess exterior lighting that would impact negatively on the residential property owners at the back of the property, how the design of the exterior facades matched common architecture found in Downtown Lawrence and how the gas station property would be developed. Mr. Shmalberg was very receptive to these concerns and changes were seen the ultimate design presented to the city.

The developers of Berkley Plaza have expressed a commitment all along to develop this project in a way that demonstrates the owners can be good neighborhoods. The final plan developed for the city clearly demonstrates that commitment.

On April 1, the City Commission voted 4-1 to reject the city staff recommendation for one of the competitors and adopted the Berkley Plaza project for the Municipal Court building.

The City still must hash out details on interior finishing of the building and sign the final contract with Berkley Plaza. The building is expected to be completed and occupied by the Municipal Court by March 1998.



Spring Cleanup

The East Lawrence Improvement Association plans a spring clean up on May 3. Members of ELIA invite you to join us in picking up litter in selected alleys and vacant lots in East Lawrence.

Join us in the alley behind the Social Service League [between NH and RI, off 9th Street], at 9 a.m., May 3 [Saturday]. Bring your gloves - we'll provide the trash sacks.

The time has come for the City of Lawrence to commit to a true mass transit system for this city. This is more than an issue of helping to decrease automobile traffic in the city, or limiting harmful emissions from those same automobiles. It is really an economic development and jobs issue.



The issue has certainly been studied to death. According to the Lawrence Journal World, the City of Lawrence has commissioned nine public transportation studies, the latest of which cost \$80,000.

The city has in fact toyed with mass transit since 1871. In the early years, various trolley, streetcar or bus services operated in the downtown area, connecting it with the train depot in North Lawrence. Electric street car trolleys provide true mass transit from 1909 until the 30s, when our increasing reliance on personal automobiles caused their demise.

The Lawrence Bus company did operate a service from 1957 until 1971, when it was taken over by KU on Wheels. That bus service only made money in the first ten years of its existence.

At the moment we have two bus services: one supported by KU students, and obviously targeted at serving the campus and a limited van service operated by the city over the last four years, targeting the elderly, disabled and low income residents.

The reality is Lawrence has grown large enough to support a true mass transit system and, frankly, its economic viability requires one. The growing businesses in the Western, high growth areas of Lawrence will need more and more employees to staff their growth and to staff newly arriving businesses moving here from Kansas City and other areas. Many of those employees and potential employees live in East Lawrence and other parts of the city that are not easily accessible to these West Lawrence businesses. Johnson County has already discovered the crises of matching unemployed residents of Kansas City, Missouri and Kansas City, Kansas with expanding business in southern Johnson County and are already seriously discussing mass transit solutions for matching up these needs.

It is time for Lawrence to address that problem. A very reasonable mass transit system, featuring small energy efficient, non polluting power systems really does not cost that much, especially in light of the other costs that would be decreased, i.e. pollution,

traffic congestion and unemployment.

The City Commission should adopt such a system and seek revenue funding placing the true costs of a system on the parties who benefit most from a good system: employers, encouraging them to subsidize employee fares; automobile drivers, through a municipal gasoline tax; and the general public, through modest property and sales taxes.



Church razing

The Lawrence School District continues to plan the demolition of the Overcoming Church of God in Christ building at 1346 R. I. Despite protests of adjoining neighbors, the school district continues to believe elimination of this building is needed for expansion of the athletic fields at Central Junior High School.

In addition, the school district plans to seek the closing of 14th Street between the church and the school, so that space can be used for an extension of the track. Many East Lawrence residents are quite concerned at that prospect, since this street is a major route connecting the University and Haskell street.

Revitalizing 800 block of New Jersey - House by House

Congratulations to Nicky Proudfoot, 820 N.J., on moving a house on to the lot at 816 N.J. Over the past 13 years, Nicky has built two new structures and renovated an historic brick house, all in the 800 block of N.J.

Her efforts have strengthened a critical residential boundary of our neighborhood. Thanks, Nicky. Keep up the good work.

Lawrence Art Center

The Lawrence Art Center has begun a six week process of attempting to build a community consensus for expanding their building, the old Carnegie Library.

The LAC Board would like to expand their facility to the North or the West of the Carnegie Library. They have already raised \$ 1.5 million from private donors and are looking for grants and other revenue sources to accomplish purchase of the land, in whichever direction they expand, and building of a wing to the library. They also plan to renovate the interior of the original building.

The LAC Board believes it must expand in order to accommodate existing programs and to grow their artistic activities. They have rejected options such as locating some programs in other buildings downtown. They already operate dance programs in a building to the North of the current building and do not believe that approach is acceptable.

Representatives from the East Lawrence Improvement Association are attending these meetings. The ELIA Board believes any expansion of this building should take into account the residences surrounding the Carnegie Library, to slow the erosion of downtown residential occupancies, and that reasonable steps should be taken to require the expansion include parking to replace that which will be lost in the expansion.

Conservation Easement

The Lawrence Preservation Alliance, with the help of East Lawrence residents, recently succeeded in a long fought objective of creating a conservation easement along the Kansas River directly to the East of the outlet mall.

As a result of this step, no future development will occur in this area, preserving this river land for wildlife.

South Park on Historical Register?

The Lawrence Preservation Alliance, which is working to have South Park placed on the Historical Register, is sponsoring a public education meeting to explain what is involved with this designation and what impact it will have on neighbors.

The meeting will be held at the South Park Rec Center, at 7:00 p.m. on May 12, 1997.

Congrats !

Austin Turney

Long time friend of ELIA successfully ran for Lawrence School Board, garnering the second highest vote for the election. Best of luck, Austin.

Marty Kennedy

Prominent East Lawrence businessman collected the largest number of votes for City Commission in the spring elections. As a result of his strong vote count, Marty was elected Vice Mayor. ELIA board members appreciate Marty most for his strong, constructive input in our Neighborhood Plan.

ELIA Board and officers

President	Fadra Andrews [841-2834]
V.P.	Prisella Adams [843-2114]
Sec.	Dana Hurlburt [749-4843]
Trsr.	Shannon Murphy [842-0643]

Board

Prisella Adams	[843-2114]
Fadra Andrews	[841-2834]
Melissa Arnett	[841-3802]
Rand Gaston	[749-2317]
Karen Hawk	[832-2580]
Lori Hinrichsen	[865-1404]
Dana Hurlburt	[749-4843]
Jim Hurlburt	[749-4843]
Jim McCrary	[841-8370]
Shannon Murphy	[842-0643]
Jim Power	[749-2549]
Shelle Rosenfeld	[749-4165]
Barry Shalinsky	[842-1953]
John Swift	[843-0123]
Bill Wachspress	[865-1404]
K. T. Walsh	[749-2549]

Neighborhood Coordinator
Bob Kennedy [832-2506]

Help Wanted

Individual wanted for regular cleaning and maintenance of recently remodeled offices and printing shop. Five to seven hours per week, coming in on a regular basis. Should be reliable, neat, and organized.



Ask for John Naramore at Kansas Key Press, 900 New Jersey, 842-4483. (This is the old Apple Valley Boat building).

I will ask for references. Will consider any good worker, but this would be a good job for a retired person. No heavy lifting, no windows.

Nobody cares what happens to East Lawrence...

...more than your neighborhood association cares.

If you care about your neighborhood, come to the

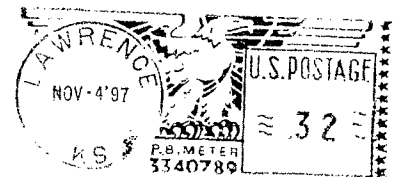
**East Lawrence Improvement Association
General Meeting on Monday, November 10th at 7:30pm
in the New York School Library.**

Improvement? Each year, the association brings thousands of dollars in grant money into our neighborhood to improve streets, sidewalks, and lighting, to plant trees, and to clean up trash.

What do *you* want to see improved?

This will be our *most important meeting of the year*. Come tell us what you think our neighborhood needs, choose people to represent you, and plan the future of one of Lawrence's most unique and historic neighborhoods.

East Lawrence Improvement Association
P.O. Box 442393
Lawrence, KS 66044



EAST LAWRENCE RESIDENT
MARSENE SWARTS
PO BOX 708
LAWRENCE KS 66044-0708

Nobody cares what happens to East Lawrence...