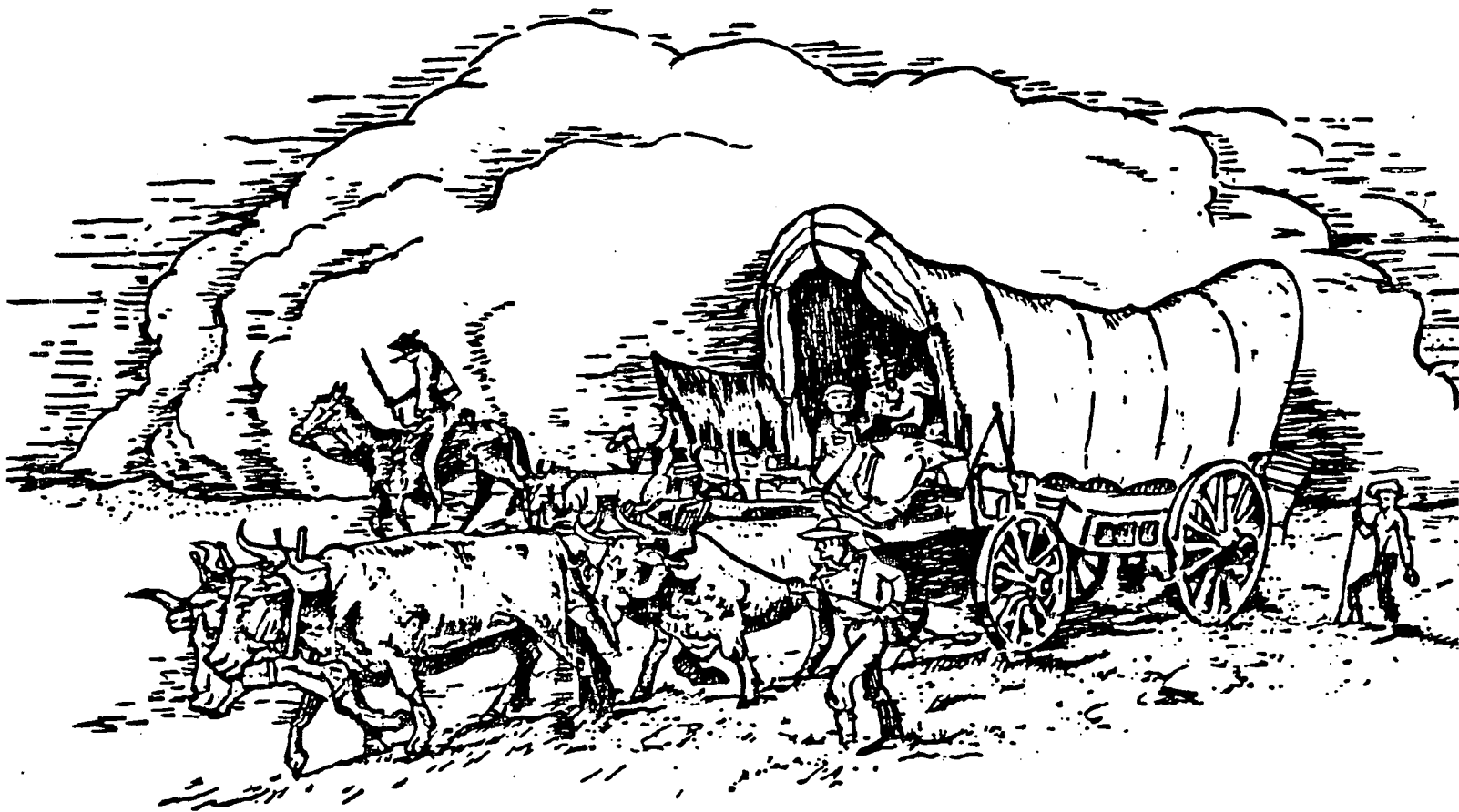


THE PIONEER



Published Quarterly By:

Douglas County Genealogical Society

P.O. BOX 3664

LAWRENCE, KANSAS 66046-0664

DOUGLAS COUNTY, KANSAS, GENEALOGICAL SOCIETY

P.O.Box 3664
Lawrence,KS 66046-0664

Administrative Committee and Jobs Assumed

Mary Burchill burchill@ku.edu	President
Beverley Chapman labechap@msn.com	Treasurer
Beverley Chapman	Publications
Martha Harris mharris@ku.edu	Librarian
Don and Wilma Vaughn dwwwiv@earthlink.net	Webpage
Paul Jordan jordpc@brownchair.net	Genealogist

PIONEER

Mary Burchill burchill@ku.edu	Editor
--	--------

The Douglas County Genealogical Society is a non-profit organization. Meetings are held at intervals and announced in the *Lawrence Journal World*. Membership fees are \$15 single, \$2 for each additional member of the same household. Checks should be made payable to the Douglas County, Kansas, Genealogical Society (DCGS) and sent to the address above (see form in issue). The fiscal and membership year is from January 1 to December 31. Visitors are always welcome at the meetings.

The Douglas County Genealogical Society Library is located in the Helen Osma Room on the lower level of the Lawrence Public Library, 707 Vermont, Lawrence. Hours are Monday through Friday, 9:30-9pm; Saturday 9:30am-6pm; and Sunday, 2-6 pm. Anyone may use the library, but items may not be checked out. Microfilm readers are available in the Osma Room.

Webpage

<http://skyways.lib.ks.us/genweb/douglas/dckgs.html>

The Pioneer

Published by the

Douglas County, Kansas, Genealogical Society, Inc.

PO Box 3664

Lawrence, Kansas 66044-0664

Volume 26, no. 1-4

January-December 2003

Library Work Day	1
Sexquientennial Cookbook	1
Pioneer Back Issues	1
Bunker Clark	2
Abstracts	2
Membership form	2
Society Programs for the rest of the year	3
New books added to the library	4
Original land purchases, Delaware trust lands	5
Genealogy on the Internet	6
Welcome to the Osma Room	10
Pleasant Grove School pitures	12
We've been reading the newspapers	14
Interview with George Washington Presgrove	16
Death of Benajah H. Miles	18
Eudora tidbits	19
A story of Quantrill	20
An historical society demise	23
Kansas Library Card	28

Descendant of Baby Doe Tabor	31
Douglas County Land Owners, 1857	34
Pioneer Cemetery in Baldwin	50
Obituaries	
J. Bunker Clark	59
Vivian G. Clough	60
Max D. Kennedy	61
Albert A. Moore	58
Elizabeth Sanders	57
Index to Volume 26	62

LIBRARY WORK DAY

On Saturday, February 28 at 10am any interested members of the Society will gather in the Osma Room of the Lawrence Public Library to get our part of the room back in order. We will shelve quarterlies, clear out the store room and make sure our books are in order. Please, come help. You can also pick up back issues of the Pioneer that you need, **FREE**. See an article later in the Pioneer for the details .

SESQUICENTENNIAL COOKBOOK

The Society is considering putting together a cook book for the Sesquicentennial of Lawrence. We may include some old recipes but it will be mostly recipes from members. Come to the February 17 meeting where we will vote on doing the project and learn the particulars. Be thinking of and collecting recipes, either from your family long ago or of today.

PIONEER BACK ISSUES

The Society has copies of nearly all issues of the Pioneer that have been published. They are now being stored in the Osma Room storage closet. We need the space and you need the Pioneer for your own research. To accomplish that we will be in the Osma Room one hour before the program in February, March and May. We will also be there on February 28 for a work day and to give out the Pioneers. Bring your list of what you need. There will be no charge for these issues.

BUNKER CLARK

The last several issues of the Pioneer have been edited by Bunker Clark. He did a great job but Bunker died in December. So this issue is a bit hit and miss and definitely does not have the amount of class that he put into each issue. We will miss Bunker in lots of ways. Thanks, Bunker.

ABSTRACTS

The saga of the abstracts continues. The library needs the space and to that end we sought someplace to put the abstracts. Watkins Museum will take them and is excited to get them. Bruce Flannery will box them up and take charge of getting them to Watkins. The next issue of the Pioneer will show how Richard Wellman from Baldwin used a spreadsheet to more or less index each abstract. Watkins will no doubt be asking for volunteers to get these abstracts in order and indexed.

Dues for the Douglas County Genealogical Society are due on January 1 and are good through December 31 of that year 2003 dues can be paid now.

MEMBERSHIP APPLICATION

Name _____ Maiden name _____

Street _____ Apt # _____ Home phone _____

City _____ State _____ Zip _____ e-mail _____

Renewal New Surnames you are searching _____

Amount enclosed _____ (\$15.00 per year, \$2.00 for each additional member of household)

Mail to: DCGS

PO Box 3664

Lawrence, KS 66046

Make checks payable to : DCGS

SOCIETY PROGRAMS FOR THE REST OF THE YEAR

Tuesday, February 17, 2004 at 7pm Lawrence Public library

GERMAN RESEARCH Joe Breitenstein of the Topeka Genealogy Society will give a presentation on ways to successfully trace German ancestors. If you plan on coming let Linda know at lindagentrylang@hotmail.com.

Tuesday, March 16, 2004 at 7pm Lawrence Public Library.

THE SLAVE GENERATION Angela McComas, professional genealogist and staff member at the Mid-Continent Public Library, will give a presentation on researching the slave generation. Property records, slave schedules and probate records will be discussed in this advanced class.

Saturday, April 17, 2004 at 9am, Kansas State Historical Society, Topeka

TOUR OF THE KANSAS STATE HISTORICAL SOCIETY Staff at the Kansas State Historical Society will provide a tour and overview of the library and archives at the Kansas State Historical Society. Participants will meet at the Kansas State Historical Society at 10 minutes before 9am. The tour will begin at 9am.

Tuesday, May 4, 2004 at 7pm, Lawrence Public Library.

DNA: A NEW TOOL FOR GENEALOGISTS. Professional genealogist Rebecca Christensen will discuss DNA testing and its uses in genealogical research. Her discussion will include information about DNA surname projects and the types of DNA tests that are available to genealogists.

NEW BOOKS ADDED TO THE LIBRARY

Marriage Records.

Jefferson Co., Kansas residents who obtained their marriage licenses in Douglas Co., Kansas. 1864-June 1987

The Marriage Records are sorted alphabetically by Jefferson County resident and include age, residence, date, spouse, age of spouse, residence of spouse and source of information. It has 44 pages and is looseleaf.

Original Land Owners-Delaware Trust Lands of Jefferson County Kansas.
Purchased at auctions at: Fort Leavenworth (Nov. 1856) Ranges 19 and 20.
Ozawkie (July 1857) Ranges 16, 17, 18.

The Original Land Owners-Delaware Trust Lands begins with a discussion of where these records are, how they are listed, etc.. The introduction is a good overview of territorial land records and is included in this Pioneer following these reviews.

The body of the book is divided into two sections. The first is an alphabetical listing by name which includes Quarter, Section, Township, Range, Acres, Date of Purchase and Price per acre. The second section is sorted by land description and includes the same information. It is 55 pages long.

Both of these titles were compiled by Howard Wellman and will be shelved in the Osma Room.

ORIGINAL LAND PURCHASES, DELAWARE TRUST LANDS

Portions extracted from Andrea's History of Kansas are shown in BOLD PRINT.

On May 30, 1854, Kansas was admitted as a Territory, and the rush of settlement commenced at once. Treaties had been made with the Delaware Indians, to whom the lands which now comprise Jefferson County then belonged; but the lands were not yet opened to settlement nor surveys made. No attention, however, was paid to this fact, and during the year a large number of persons selected claims within the limits of the present county, though but comparatively few made an actual settlement until the following year.

The lands comprising the Delaware purchase included the greater part of the county, but excepted a large tract held by the Delaware Indians, as a diminished reserve. We now speak of these as the "Delaware Trust Lands" and the "Delaware Reserve Lands". The "Delaware Trust Lands" were to be sold at two public auctions. The first was to be held at Fort Leavenworth, starting in November 1856 and the second at Ozawkie starting in July 1857. The "Delaware Reserve Lands" were later transferred to the Federal Government by treaty with the Delaware Indians that was approved in July 1860. The "Reserve Lands" were transferred to the Union Pacific Railroad. The railroad later sold most of those lands directly to individuals in the latter 1860's. Here, we are only going to address the land sales of 1856 & 57.

Previous to the land sales, the settlers had no right whatever to the land which they occupied, except a "squatter's right," which was simply a right by possession, and with an understanding that each settler would be allowed to bid on the land he claimed, at its appraised value, on the day of sale.

The squatter's right proved a fruitful source of many serious troubles. There was much contention as to the ownership of claims, and a question as to what constituted a settlement. At first a habitation was required, but soon a mere foundation was regarded as sufficient to hold a claim. This was subject to many abuses, for it was not long until many tracts of land were literally covered with "foundations", which in a majority of cases were formed of four twigs lain in form of a square.

A search for the records for any of these early claims and/or records of the land sales of 1856 & '57 was made at the Jefferson Co. courthouse Register of Deeds office. However, most of the recorded deeds started with an owner who was not the Federal Government, with a few exceptions where a much later filed "Land Patent" was recorded. Microfilm copies of KANSAS TRACT BOOKS were found at Kansas State Historical Soc. library in Topeka. That series of books record the original transfer of lands from the Federal Government and includes all of Jefferson county that was sold in the land sales. It is film No. MS-325. There is also a series of microfilm of Plat maps, one map for each survey township (36 sections of land) of Jefferson Co. Film No. MS 364. The first land auction at Fort Leavenworth, Nov. 1856, sold the northeastern portion (Ranges 19&20). The remaining western portion was sold at Ozawkie in July 1857.

The microfilm of the land sales is fairly legible, though everything is handwritten in script. There is always some difficulty in reading script to be sure of exact spelling of names, so there may be some errors in interpretation of the handwriting. The most difficult aspect was in determining the middle initial of the person, so be sure and consider the possible errors. There also appeared to be some notes included on some parcel records, that I think may have been something about a squatter's claim, though all of those notes were very small and maybe done in pencil as they did not copy onto the microfilm. The Plat maps do show some squatter claims and some names are legible, though many are not. Since the land had not been surveyed, most of those claims are shown as little boxes of various sizes and had no connection to subsequent quarter section lines.

As you look at the prices paid and the price variation, one can almost feel the excitement as each family waited to bid on the quarter section they most desired.

GENEALOGY ON THE INTERNET

Last Fall Martha Harris presented a program for the Society on Researching Genealogy on the Internet. It was so good that the Library asked her to do it again under their sponsorship. The following pages were handouts.

Researching Genealogy on the Internet
January 21, 2004
Martha Harris <mharris@ku.edu>

Caveats and clues:

- 1 *The Web changes constantly. Check sources often. They may add what you're looking for.*
- 2 *Web pages can disappear. Print them with URL and date for your records.*
- 3 *Post queries. Queries are archived. Many people search archives instead of reading lists, so they might find you years later. Write your query with this in mind.*
- 4 *Anyone can post anything to the Web. Not everyone is the careful researcher you are. Check sources. If no sources are listed, beware. Contact the author.*
- 5 *Primary sources over secondary sources. But primary sources can also be wrong.*
- 6 *To search for specific text on a web page, use "control" and "F" (or the "Find" feature under "Edit") to bring up a search window. Remember to try many spelling variations.*
- 7 *It's spelled "genealogy".*
- 8 *Do free research for people. They'll pass the favor on. If you're lucky, they live in the right place to find information for you.*

General Research

1. <http://www.cyndislist.com> *Cyndi's List*. You can find links to anything related to genealogy here. Updated constantly.
2. <http://www.rootsweb.com> *RootsWeb*. The mother-lode of surname research, local research, and lots more. RootsWeb is free and is owned by Ancestry which is subscription. You'll see links to Ancestry on every page.
3. <http://www.familysearch.org> *Family Search*. The on-line database of the Church of Jesus Christ of Latter Day Saints. Not all the data they have in their libraries, but they're working on it.
4. *RootsWeb Review*. Weekly e-zine about new developments and new submissions. Always interesting. To subscribe, send a plain-text email with "subscribe" in the message to: <rootsweb-review-subscribe@rootsweb.com>.
5. *Missing Links* and *Somebody's Links*. E-zines about recent research. Interesting articles. Subscribe via <http://www.petuniapress.com>.
6. <http://boards.ancestry.com/> Links to surname, location and topic boards.

Surname Research

1. <http://www.genforum.com> *GenForum*. Click on the alphabet to get a huge listing of surnames under that letter. This is a board that anyone can post to. Very searchable.
2. <http://worldconnect.rootsweb.com> *WorldConnect Project*. RootsWeb's database of submitted surnames including who submitted the info and contacts. (Running the big search in RootsWeb will pull WorldConnect listings. Ancestry also uses WorldConnect.)
3. <http://grampa.gendex.com/gendex> *Gendex*. It's weird. It's big. It's sometimes useful.

4. http://www.genealogy.com/index_a.html *Genealogy.com & Family Tree Maker*. You can search their free data, even if you don't pay their fees.
5. <http://ssdi.genealogy.rootsweb.com/cgi-bin/ssdi.cgi> RootsWeb's Social Security Death records.
6. <http://www.dcs.hull.ac.uk/public/genealogy/royal> *Directory of Royal Genealogical Data*. If you have royalty in your family.
7. <http://www.interment.net/> *Cemetery Transcription Library*. A growing collection of tombstone transcriptions. Remember that Control F trick to search pages quickly for your name?
8. <http://www.surnameweb.org> *Surname Web*. This site seems to connect to other sites, some of them pay sites. Proceed with caution!
9. <http://www.hamrick.com/names> *Surname distribution*. Actually intended to sell a product, but interesting to see their version of surname distribution in the U.S.
10. <http://www.huguenot.netnation.com/general/> *The National Huguenot Society*. If your ancestor was of a particular ethnic or social background, there may be someone studying that group.
11. <http://matteson.us/> Matteson Genealogy. <http://www.maxson2000.net/> *Maxson Family*. There may be a family organization for your surname!
12. <http://freepages.genealogy.rootsweb.com/~frosty/tjharris.html> *Thomas J. Harris Family Pictures, etc.* Personal pages can be a resource for others and help you make contact with researchers.
13. <http://www.linkline.com/personal/xymox/fraud/fraud1.htm> *Fraudulent Lineages*. Beware of these published lines.
14. Remember you can also use your favorite search engine to pull up sites. Put quotation marks around words you want to find occurring together. Try adding "genealogy" to your search.

Location Research

1. <http://www.usgenweb.org> *U.S. GenWeb*. Links to state and county pages. Most county pages include detailed info on county history and resources, including how to contact researchers in the local genealogy and historical societies. Remember to check the archives
2. <http://www.genforum.com> *GenForum*. Click on the regional location and follow your nose. Keep in mind that each state page has a link to counties in that state. All very searchable.
3. http://members.tripod.com/~records_searcher/index.html *300 Million Searchable Records*. Perhaps not really that many, but a large number of sources for TN, NC, SC & VA.
4. <http://www.statelib.lib.in.us/www/isl/whoweare/genealogy.html> *Indiana State Library*. Remember to check local and state libraries.
5. <http://oddens.geog.uu.nl/index.html> *Odden's Bookmarks*. Links to lots of cartography sites.
6. <http://www.distantcousin.com/Directories/KS/Topeka/1912/index.html> A commercial site that has inexplicably scanned the 1912 Topeka City Directory. You just never know!
7. <http://usgenmap.rootsweb.com/usgenmap.htm> *US Genealogy Map Project*. Lots of maps.

8. <http://www.livgenmi.com/1895.htm> Maps
9. RootsWeb also supports mailing lists for researchers of counties or geographical areas. You can subscribe via the RootsWeb page. (For example, the Douglas County, KS list subscription is <KSDOUGLA-L-request@rootsweb.com>.

Census

1. <http://www.familysearch.org> *Family Search*. Click the Search tab, then Census, and choose the 1880 US census.
2. http://envoy.libofmich.lib.mi.us/1870_census/ *1870 Michigan census*. Really! Searchable by name. Original page image can be printed. (I found this by a listing in RootsWeb Review.)
3. http://freepages.genealogy.rootsweb.com/~mackley/census_page.htm *Missouri Census Images*. This was posted to a county web page. It pays to check out all the links on pages.

Military

1. <http://members.aol.com/TeacherNet/Revolutionarywar.html#Terms> *Revolutionary War links*.
2. <http://www.hardscrabblefarm.com/ww2/index.htm> *World War II*. Reenacting research.

Civil War Research

1. <http://www.nara.gov> *NARA*. Instructions to order military records.
2. <http://users.rootsweb.com/~tn4cav> *4th TN Cavalry*. Civil War enthusiasts have created web pages for particular units and they're worth searching for. Usually includes names and history.
3. <http://www.cpcug.org/user/jlacombe/mark.html#civil%20war> A personal web page with tons of links. CW links at the bottom.
4. <http://www.cwc.lsu.edu/cwc/civlink.htm> *The US Civil War Center*. Huge!
5. <http://www.itd.nps.gov/cwss/> *Civil War Soldiers and Sailors System*. Huge!
6. <http://carlisle-www.army.mil/usamhi/PhotoDB.html> *MHI Photograph Database*. Search for photos. It won't show you the photo, but you can order a free photocopy.
7. <http://suvvw.org/id.htm> *Sons of Union Veterans of the Civil War*. Successor to the GAR. Many links.
8. <http://www.cwc.lsu.edu/> *The US Civil War Center*. One of THE research sites. Not much genealogy, but lots of history.
9. <http://scriptorium.lib.duke.edu/women/cwdocs.html> *Civil War Women: Primary Sources on the Internet*. More history than genealogy.

Land Research

1. <<http://www.glorerecords.blm.gov/>> *U.S. Land Records for the eastern U.S.* This site gets hacked sometimes. If it won't come up, wait a few days and try again.
2. Don't know how to read land records? Go to Cyndi's site and look under Land Records to learn how to read how land is legally described (Range, Township, Section). It's not hard to learn.

Quaker Research

1. <http://www.rootsweb.com/~quakers/> *The Quaker Corner*. A great place to start learning about Quakers/Friends.
2. <http://www.quaker.org/> *The Religious Society of Friends*. When you really want to understand your Quaker ancestors. Lots of very helpful links. Maintained by Friends.
3. <http://home.sprynet.com/~jrichmon/qkrcoll.htm> *The Quaker Collection*. Includes info on some of larger families.
4. <http://freepages.genealogy.rootsweb.com/~jrichmon/quaker/qkrmtgs.htm> *Quaker Meetings by state*.
5. <http://library.friends.edu/Collections/Quaker/> *Friends University Quaker Collection*. Some great photos of people and meetings. Kansas Yearly Meeting archives are at Friends U and the archivist, Art Binford, is very helpful. (Contact me for his email.)
6. <http://www.earlham.edu/~libr/quaker/> *Earlham Library*. "Resources" will link you to a good selection of Friends historical info. Especially try the American Friend Obituary Index. You can order the obits here or contact the archivist at Friends University (Wichita) for copies.

Trails

1. <http://www.lewisandclark.net> *Discovery Expedition*. A bunch of guys with boats. They're reenacting the L&C trip. Links to lots of L&C info, and just plain interesting.

Other

1. <http://genealogytoday.com/software/index.html> *Software comparisons*. If you're thinking of buying genealogy software.
2. <http://www.mcpl.lib.mo.us> *Mid-Continent Public Library*. Just over in Independence, MO and a great collection. Search their catalogue before you go.
3. <http://theoldentimes.com> *Olden Times*. Old newspapers for genealogy and history buffs. Submitted newspaper material.
4. <http://moa.umdl.umich.edu> *Making of America*. Scans and text of American historical documents.
5. <ftp://ftp.rootsweb.com/pub/roots-1/genealog/genealog.perpcal> A perpetual calendar.
6. <http://searchforancestors.com/utility/birthday.html> Birthday calculator.
7. <http://www.hackerscreek.com/formula.htm> A formula to determine date of birth.
8. <http://eh.net/hmit/ppowerusd/> *Economic History Resources*. To find out how much that dollar meant to Grandpa back in 1875.
9. <http://www.ourtimelines.com/index.shtml> *OurTimeLines.com*. Make a free timeline! Now make one for everybody you can think of!
10. <http://warp.byu.edu/circlechart> Generate a free wheel chart, using your own gedcom.
11. <http://waltonfeed.com/old/index.html> *The Old Timer's Page*. Articles describing life in the past.

WELCOME TO THE OSMA ROOM

RESOURCES INCLUDE:

Three Book Collections

- *Kansas Collection* - LPL's collection of books dealing specifically with Lawrence and Douglas County history (titles are included in Library's online catalog)
- *DCGS Collection* - The Douglas County Genealogical Society's collection of genealogical resources
- *DAR Collection* - Daughters of the American Revolution collection of resources

Kansas Vertical File

- Newspaper clippings and articles relevant to the history of Kansas, Lawrence, and Douglas County
- Search by using *Index* located on top of Kansas file cabinets

Microfilm

- Census records for Douglas County
- Census records for Kansas
- Census records for "Five Civilized Tribes in Indian Territory"
- Lawrence newspapers dating from 1854-current
- Marriage records, 1854-1992 with Index

Finding Aids - Index Shelf

- Indexes to the DCGS and DAR collections
- Indexes to resources at area history and genealogical museums and libraries
- Research outlines and tips
- Bibliographies and handouts

GETTING STARTED:

- *Index to Resources: Osma Room, Lawrence Public Library on Index Shelf* lists the resources in this collection and includes Frequently Asked Questions.
- *Researching the History of a House in Douglas County* on the Index table provides suggestions for locating information on a building in the area.
- *Family History Information in Douglas County: The Short List, 2002* pamphlet on Index table provides information on conducting family history using local resources.
- *Summary of Local Records* list in Information file box on Index Shelf lists places to conduct a variety of records searches.

ELECTRONIC RESOURCES

Heritage Quest

- Subscription database provided through the Kansas State Library
- An excellent genealogical resource available at no cost to library users at all LPL public Internet stations
- Also accessible at remote locations by using your Kansas State Library Card, which you may obtain at no cost at one of the LPL Reference desks.

Public Websites:

There are numerous free resources available to individuals who wish to search for genealogical information on the Internet.

- Lawrence Public Library's web site offers a wide array of local historical information:
www.ci.lawrence.ks.us/local_history/index.shtml
- Other excellent sources include:
<http://skyways.lib.ks.us/kansas/nekls/patti/genealog.html>
<http://skyways.lib.ks.us/genweb/>
<http://www.cyndislist.com/>
<http://www.familysearch.org/>
<http://www.usgenweb.org/>
<http://www.ellisland.org/>
<http://www.rootsweb.com/>
- The National Archives features many useful genealogical resources on its web site:
<http://www.archives.gov/index.html>
- National Archives facilities location and information:
<http://www.archives.gov/facilities/index.html>
- Excellent search engine useful for locating a wide variety of Internet resources:
www.google.com

PLEASANT GROVE SCHOOL
1921



ESTELLA CAMPBELL, CLYDA HIATT, FERN EBERHART, HULDA DAILY, MADGE McCALL
AUDREY LANDIS, FRANCES WILLIAMS, GRACE HIATT, ETHEL TUCKEL, BLANCHE CAMPBELL,
HAROLD BRECKENRIDGE, MILDRED BRECKENRIDGE.

ROBERT TUCKEL, CARL HEGEMAN, LEONA TUCKEL, LEONA DAILY, ORVILLE FLORY,
SANDY WILLIAMS, JASPER DAILY, ELVA DANIELS, THELMA DANIELS, DAISY DYER,
THELMA BRECKENRIDGE.

ARLEY FLORY, LESTER HEGEMAN, JAY HIATT, EDNA PATTERSON, LUCILE CAMPBELL,
DORIS HIATT, EVA PATTERSON, LEONARD DEAY, LEE DYER

KENNETH HEGEMAN, CARL DANIELS, ERNEST TUCKEL, ROBERT DYER, EDGAR PATTERSON,
HENRY FLORY.

PLEASANT GROVE SCHOOL PICTURES



1922

BACK ROW

HULDA DAILEY, ETHEL TUCKEL, MARY NORRIS (Teacher) ORVILLE FLORY, MILDRED BRECKENRIDGE, HAROLD BRECKENRIDGE, JASPER DAILEY, BLANCHE CAMPBELL, GRACE HIATT

SECOND ROW

PAUL FLORY, LEONARD DEAY, JAY HIATT, ERNEST TUCKEL EDWARD PATTERSON
KENNETH HEGEMAN, ARLEY FLORY

THIRD ROW

WALTER MOORE, ELVA DANIELS, THELMA DANIELS, ESTELLA CAMPBELL
CLYDA HIATT, EDNA PATTERSON, FERN EBERHART, LEONA TUCKEL

FRONT ROW

EVA PETERSON, DORIS HIATT, LUCILLE CAMPBELL, EDGAR PATTERSON
ROBERT TUCKEL, HENRY FLORY, CARL DANIELS, THELMA BRECKENRIDGE

WE'VE BEEN READING THE NEWSPAPERS....

Lawrence Daily Journal & Evening Tribune, February 3, 1894, Saturday

"Society Notes & Personals"

Dr. H.S. GARDNER left Tuesday for Jacksonville, Illinois

Miss Elsie CLINGER came down from Topeka Tuesday evening.

There are two weddings that will occur next Tuesday.

Miss Ruth PLUMB was called home from her University work this week by the illness of her brother.

An engagement party was given in West Lawrence last Sunday. The wedding will take place in June.

Superintendent and Mrs. C.F. MESERVE returned Wednesday from a pleasant stay of about two weeks in the state of California.

Mrs. Gen. H.S. HALL and daughter Miss Mabel are in New York, having been called there by the death of a relative. They will likely stay some time.

The wedding of Mr. Ed. SCHALL to Miss May RUSHMER is announced to take place next Tuesday at 1 o'clock at the home of the bride in the west part of the city.

The Kappa Alpha Theta fraternity entertained the girls of the other two University fraternities last Saturday evening at the home of Miss Mary STONE.

There is a very large enrollment of the ladies of Lawrence in the University extension course of lectures on electricity that was begun this week by Prof. L.I. BLAKE. The course will undoubtedly be a very popular one and already has a larger enrollment than any course that has yet been given in Lawrence.

There was considerable of a society feature about the presentation of "The Old Oaken Bucket" that was given last evening and the night before by home talent. The parts taken were nearly all by those who are active in the little Lawrence social world and to their efforts is largely due the success of the production.

The event of next week is the reception of the Kappa Kappa Gammas that will occur on Saturday afternoon and evening. All the members of the University faculty have been invited and the members of other girl fraternities as well as the usual list of young men. There will be every effort made to eclipse all precious attempts at entertaining in a swell way.

There has been rather a lack of anything going on this week but the young folks have made up for it by enjoying themselves on the ice. Every evening there have been great crowds and though the ice has been far from good skating the boys and girls have seemed to spend the time in a way that was very pleasant to them. There will be considerable more of it from present prospects.

The wedding of Mr. Louis POEHLER to Miss Eva MILES on Thursday afternoon was the only event of this kind that occurred this week. It was a home affair and only the intimate friends and relatives of the young folks were present. The wedding took place at the suburban home of the bride's father, Col. John D. MILES, just south of the city. [Now the 1500 block of Barker, west side.] After the uniting words has been spoken by Rev. Dr. CORDLEY and the company partaken of a luncheon, the bridal couple left for a trip to New York and other eastern places and after their return they will be at home to friends in this city.

Thursday was the fiftieth anniversary of the marriage of Mr. and Mrs. Charles DUNCAN. The occasion was remembered by a pleasant family gathering at the home on Tennessee street and the having of an old-fashioned family dinner. Later in the day Mrs. and Mrs. Duncan were remembered by the presentation of a splendid leather upholstered

arm rocking chair. This was accompanied by the following.

Mrs. and Mrs. C.S. DUNCAN: A few of your many friends and neighbors offer their hearty congratulations on this fiftieth anniversary of your marriage, and also a slight testimonial of their respect and affectionate regard: (signed)

C.A. PEASE,
Wm. BROMELSICK,
John HUME,
J.H. SHIMMONS,
James BROOKS,
Richard WAGSTAFF,
O.E. LEARNARD,
Ed. PIERSON,
John KILWORTH,
M. SUMMERFIELD,
Adam OLIVER
A.G. HONNOLD,
John BARBER,
B.W. WOODWARD,
G. GROVENOR,
W.R. WILLIAMS,
F.D. BROOKS,
Paul R. BROOKS,
Mary McMILLAN,
J.C. WALTON,
Nels STEVENS,
Charles ROBINSON,
J.G. SANDS,
R.B. McKIM

Interview with George Washington Presgrove, page 22A, The Topeka Daily Capital, Sunday Aug. 15, 1954

Secret of 103 Years - Tended to my own Business - by Jane Carey Plummer

The Star of the recent Lecompton centennial show was George Washington Presgrove who, wearing his hundred and three years serenely, rode at the head of the long parade that passed under the elms and maples of the drowsy little river Town which was Kansas' first territorial capital.

Nearly a hundred years of his earth-loving life have been spent on Kansas soil. Born on August 26th, his 103rd birthday anniversary, like the days of his life, will be passed in quietness and strength. Mr. Presgrove hears perfectly, and has good eyesight, and fondness for people, and fondness for gardening and music.

There's an Edison phonograph of early design in his living room; the playing of blue cylinder records, particularly hymns, and old Irish airs, is constant pleasure to him. He enjoys music by radio, too, and listens to the news of the world with interest. From Grant to Eisenhower, he has voted the Republican ticket straight and he is contented with the way the country is now being run.

There's a large picture of Abraham Lincoln and cabinet on a wall of the living room, a recollection, told vividly but with unforgettably grief by the centenarian is of a long gone afternoon which he says "I remember like yesterday."

"I remember how it was that my Uncle Main had been down by Rising Sun - there was a blacksmith shop and hotel and stores and a saloon in the little town at the mouth of the Delaware then - and I was going out to meet him. I met him a-horseback and when he came up to where I was I knew by the look on his face that something was wrong. He looked at me and all he said was Lincoln's been "assassinated", and I've never forgot how we felt - how everybody felt."

He recalls the time, back to Massac County, Illinois, near the Ohio River, where he was born, the wild pigeons flew into the farmyard, so thick they darkened the sky and so heavy in the branches they broke limbs and branches; he remembers the old mill where he first saw grain being ground; remembers the long drive to the Kansas territory where the family came by wagon, pulled by a team of oxen, Red and Ned; feels afresh the sorrow of the family when his young uncle, Tommy Woods, was shot by the rebels; chuckles over the days when they ran out of flour and lived for a long time without bread but didn't care because they had good roasting ears to eat. (Mr. Presgrove grew up to be the first farmer to plant wheat in the rich river valley near the present town of Perry.)

>From south of Ft. Scott, where his family first settled on reaching the territory, the Presgroves, who were Union sympathizers, moved on northward, coming thru Lawrence just ahead of the Quantrill raiders, and settling in Jefferson County. He has remembered pride in the first pair of boy suspenders and boots he bought from Louie Lutt's store, at Rising Sun. Thinks yet about the horse that drowned trying to cross the river from Lecompton to the opposite shore.

"It was one Sunday, and I went down to watch. The government took horses across that way. There were a lot of them, and they made it all right but that one poor horse. Just lost its head and swam round and round, couldn't get direction. Just kept going round and round until it sank."

Then there was fiddling. The pleasure of going to a neighbor's to a dance, and hearing the fiddle. The pleasure of walking. "I walked to Oskaloosa and back in a day from our farm near Perry." And he still likes walking. "I'm always up all day, nowadays." (But not walking out in the winter weather. Mr. Presgrove doesn't like the cold weather and avoids it. He doesn't catch cold either. Hasn't had a sniffle or a spell of flu for seven years, he says.)

"You know oxen are very intelligent animals," Mr. Presgrove maintains. "Real smart. That team of oxen that brought us to Kansas broke the sod and I farmed with them as a boy. All I'd have to say was hear Ned lower your head come with me and old Ned would bow his head so you could put the yoke on."

One time the family was in Leavenworth for supplies in the ox drawn wagon and they were on their way home when a hard storm came up. They made it to the covered bridge near Springdale, and there, under shelter, the storm ranting through the night, family and team stayed in the covered bridge until daybreak. A great adventure they all thought afterwards.

In 1907, George Presgrove and Laura Thompson, a girl from a neighboring farm in the Oak Grove community, were married. Old friends recall Mr. Presgrove's devotion to her. Remember too, the big loaves of bread and her ample homemaking ways. The Presgrove farm was famed for its fine fruit; the first

Elberta peaches seen by some in those times were the unusually large ones grown by Mr. Presgrove. Of children there are one girl and two boys dead and three boys living, Harry and Jim of Houston, Texas, both railroad men, and Jesse, now a slim young hearted old boy of a mere 75 years whose sweet tenor voice reminds people of John McCormick.

Jesse and his father share the comfortable white frame house on the edge of Lecompton; Jesse cooks and keeps the place neat and charming, and he sings now as he did in the days of first youth when he was popular in Williamstown literary and singing school circles, and would harmonize his fine tenor in "Goo Goo Eyes" and "On the Banks of the Wabash."

Altho Mr. George Presgrove's parents died in their middle years his sisters lived in their 80s. His friends believe he can hope for at least a hundred and ten years and who could say how many more?

"He eats like a heavy man in the winter," says Jesse, "Lighter in the summer. Likes everything. Bowls of cornflakes and buttered toast and milk, sometimes three or four cups of coffee in the morning. Likes fresh vegetables especially. And tomatoes. Never turns down tomatoes. Worked in the garden and enjoyed eating the good things the raised thru his 100th year. Wasn't age that stopped him this year. Grasshoppers and drought. Helped can 17 quarts of beans from our own garden in the summer he was 100." That was the year the town celebrated for him. The United Brethren Church and other in the community gave a party and there were 100 candles on the birthday cake. "He likes sweet things. Candy specially mints."

To what does Mr. Presgrove himself believe his long grant of years and good health can be credited?

He thought it over and seemed to have nothing to offer about that.

"Never was one to philosophize much" Jesse Presgrove mediated.

Mr. Jess got up and turned on the Edison. "Rock of Ages," and "Abide with Me," "When you and I were Young," "Maggie," "I'll Take you Home Again Kathleen," and "My Wild Irish Rose," with the younger Presgrove's true tenor were heard above the mellow music from the phonograph.

George hummed, kept time lightly with his left foot, studied the beautiful old blue china dinner plates in the glass cupboard. Thoughtfully he turned to the inquirer in room and revealed the secret of his longevity.

"I've always tended my own business" said George Washington Presgrove.

{The interviewer did make a couple mistakes, George and Laura were married 1875 and the Presgrove family first settled in Jasper Mo. before moving to Ft. Scott. Also I still have the Edison, and it works.}

Liz

A license was granted to John Brugen, of Eudora, and Catherine Vogel, of the county permitting them to jump the fence of single blessedness and graze in the green pastures of doubleness.
Don and Wilma

The Daily Journal, Wednesday, July 24, 1878.

"Death of Benajah H. Miles"

Benajah H. Miles died at his mother's residence in this city, at seven o'clock Tuesday evening, aged nearly forty-one years. At the hour of his death he was surrounded by many friends and relatives, among whom were his wife and three children, his mother, and all his brothers and sisters except two. Born in Ohio, Mr. Miles lived laterly in Indiana, whence he came to Kansas eight years ago. For two years he was agent for the Kickapoos, holding that position until the consolidation of that tribe with the Pottawatomies. For three years, up to the present time he has been chief clerk at the Cheyenne and Arapahoe Agency, for his brother John D. Miles. Four weeks ago he fell ill with low typhoid fever, contracted by overwork consequent upon the transfer of the northern Cheyennes to the Territory.

The funeral will be held on Thursday next, at 9 a.m., from the residence of Mrs. Miles, corner of New Jersey and Hancock streets. Friends of the family are invited to be present.

Benajah H. Miles has lived a most exemplary life both as a citizen and a public officer. His integrity of motive, coupled with power of doing, made him known and respected by a large circle of acquaintances, and it will be from this circle that those who are called to mourn will receive a most heartfelt sympathy.

EUDORA TIDBITS

Lawrence Daily Journal, February 2, 1884

"Eudora Items"

Eudora, Kan., Feb. 1st, 1884

The Republicans of Eudora city and township held a caucus in the City Hall yesterday for the purpose of nominating township officers. The meeting was called to order by M.D. Greenlee when his Honor, John Hammer, was elected as chairman, and Greenlee secretary.

The following named gentlemen were nominated by acclamation:

For trustee, Chas. Lethal.

For clerk, Peter Gangrene.

For treasurer, T.J. Huddleston.

For justices of the peace John Wilder and Capt. T.J. Jennings.

For constables, Geo. Stadler and Chas. Albright.

The meeting was harmonious as well as enthusiastic throughout. Party lines were not drawn as Mr. Jennings, at present our J.P. is a Greenbacker but a efficient [sic] officer. The question seemed to be who could best serve the people and give the old officers a rest. The ticket is a good one and ought to be elected.

The grandest event of the season at this place came off on the 31st, by the lady members of the Eudora dancing club giving a leap year party. The invitation committee was Misses Maggie A. Darling, Sadie M. Brogan and ELM. Schaeffer. Committee of arrangements: Mrs. SOV. Carr, Misses Vine Cop, Mary Burnets, Ida Zimmerman, Ella Brander, Annie Lethal, Clara Beck. Floor managers: Misses May Schaeffer and Sadie Brogan. Door keepers: Misses Minnie Lethal [sic], Alice Burnets. About fifty couples were in attendance and all seemed to enjoy themselves hugely, especially the gents who were favored with a fair pardner [sic] to foot the bills. A splendid supper was served by the ladies at 12 o'clock after which dancing to the excellent music furnished by A. Christianson and his string band was kept up until a late hour. To say the least the affair was a grand success and does credit to the ladies who were untiring in their efforts to make everybody happy.

Miss Mull, of Cedar creek, and Miss Curtis, of Olathe, were among the guests at the leap year party from distance.

Mr. Charles Pilla, our efficient postmaster, having the welfare of the public at heart, has added sixty-four call boxes, and thirty-three walnut flushed lock boxes, gotten up by Joseph Herz, cabinet maker of this place. They are supplied with Yale locks and are a credit to the originators. When the present improvements are completed we think Eudora can boast of as complete and nicely arranged fourth class post office as there is in this part of the state.

Among the many improvements and commendable enterprises now taking place in our little city we would not do justice to the energy and get up and get of our citizens if we failed to note the coming and going of Dr. August Loman, who has recently located among us. He seems to be busy as a bee and from reports of those whom he has treated he is working up a splendid practice, and we believe without trying to flatter the doctor, that he thoroughly understands his profession.

(signed) PINTO.

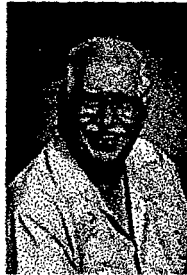
A STORY OF QUANTRILL

This was in the Alumni Magazine from Emporia State University

Abigail Morse recalls living through Quantrill's raid of Lawrence

This is the first in a series of columns by Dr. Sam Dicks, university historian, concerning the history of what is now Emporia State University and the people who helped the university get to where it is today. The name of his column, "Wave the Old Gold," is taken from the title of a song that served as an alma mater (school song) in the early years of the institution.

EMPORIA, Kansas – Abigail Prentice Barber graduated from Wheaton Seminary in Massachusetts in July of 1857, and married the Rev. Grosvenor C. Morse in Massachusetts in September. The newlyweds reached Emporia on October 19, only a few months after the town was founded.



**Wave
the Old Gold**

By Dr. Sam Dicks

Rev. Morse, a recent graduate of Dartmouth College and Andover Seminary, immediately held religious services, and in 1858 formally organized the Congregational Church in Emporia. He also helped raise money for the first school which opened in October of 1858 with Mary Jane Watson as the first teacher. He campaigned hard for the establishment of the Kansas State Normal School, now Emporia State University, and journeyed to Illinois in December of 1864 where he hired Lyman B. Kellogg as its first president. He spoke at some of the earliest teachers institutes in Manhattan and elsewhere, and served a term as Lyon County Superintendent of Schools. He was accidentally killed while digging a well on their claim southeast of Emporia in 1870.

Abigail, left with three children under the age of 10, went to work to support her family. She taught in the Emporia Public Schools and, for six years, was principal of the high school. She also taught history, literature, and rhetoric at the Normal School and served as preceptress (dean of women), where she gave guidance and counsel to many students.

Abigail Morse Hall at ESU was dedicated in her honor as a women's residence hall in 1923. She died December 6, 1925, one day short of her 92nd birthday. Each year on her birthday for many years after her death women students attended memorial services at the Congregational Church.

Her widowed sister, Mary Carpenter, was remembered by William Allen White as the helpful librarian at the Emporia Public Library (located upstairs over a store in the 1880s) who first exposed him to Emerson and other American writers. Mary later married John C. Rankin, a farmer and legislator from Quenemo; she died in 1917.

Abigail Morse had been a frequent speaker at community and church gatherings and was often asked on Kansas Day to give her account of Quantrill's guerilla raid on Lawrence in August of 1863, while she was there visiting her sister, Mary. Most blacks fled the Missouri bushwackers, knowing they faced certain death from these defenders of slavery and the Confederacy, but some white males, not expecting a massacre, remained. Only women and children were spared. Following is Abigail Morse's account, which was published in the Emporia Gazette two days after her death, on December 8, 1925:

My sister, Mary E. Barber, a graduate of Mount Holyoke Seminary, came from Massachusetts to spend a summer with us. She taught the next year in the Baldwin public schools, and the year

following that in the Lawrence high school. She was married at our home by Mr. Morse, October 10, 1862, to Judge Louis Carpenter, a young lawyer of Lawrence. The next summer – August, 1863 – I went to visit her in her new home, just finished, a 2-story brick at 943 New Hampshire street. We spent a pleasant two weeks together.

At noon on the 20th of August, Mr. Carpenter came home and said, incidentally, "There is a story on the street that Quantrill is coming to Lawrence to destroy it, as he has so long threatened to do. But," he added, "we have had so many reports of that kind no one believes them." Then he said, "It would be impossible for him to get here with his band without our being reliably notified."

Afterward it was found that messages had been sent, but failed to reach the city. One, in excitement, was sent to Kansas City instead of Lawrence. Another messenger, a boy, when he learned the destination of Quantrill's band, mounted his fastest horse and started for Lawrence. The horse fell, leaving the boy crippled and helpless. No news reached to the city of the terrible doom impending.

We were aroused at about 5 o'clock Friday morning, Aug. 21st. The clattering of the hoofs of 400 horses, the shouting and yelling of the riders, the shooting of revolvers, all united, made the most hideous noise we ever had heard. We rushed to the windows and had a full view of this terrible invasion.

They saw us and shot at us, as they rushed past our house. They went on to the center of the town, and there they stopped in front of the Eldridge house. They seemed to expect some show of defense. For years, Lawrence never had been so unprotected. The few soldiers there were colored troops, and they fled for their lives. Our first spoken words were, "Quantrill is here!" We stayed in the house, planning what we could do. Those in the other part of town had a chance to get away, but here every avenue was guarded, and all those who tried to escape were shot down ruthlessly. We watched the Eldridge house burn, and saw fires all over the town. Diagonally across the street, a fine home was burning, and in the next house to ours, a man had been murdered, but his home was saved.

Quantrill's band was composed of two kinds of men. His gang was angry, determined to kill every free state man and to wipe Lawrence from the map. Others were farmers whom Quantrill had compelled to join his forces. They were easily convinced they had not found the "right man." They were fed and treated hospitably, and went away satisfied. There was no anger in their hearts. Mr. Carpenter, it was said, by his pleasant manner and tact, had saved his life and the destruction of his home.

At about 9 o'clock, we watched the gathering of the clan for its departure, and we began to breathe free again, and to hope we were safe. The men were loaded with loot, and seemed anxious to leave. Just then there came a terrible pounding at our front door, and Mrs. Carpenter opened the door. Mr. Carpenter, coming down the stairs answered the question, "Where are you from?" He said, "New York," and the man replied, "You New York fellows are the ones we are after." He pushed Mrs. Carpenter aside and rushed up the stairs after Mr. Carpenter, shooting, and swearing at the top of his voice.

They entered different rooms, giving Mr. Carpenter a chance to come down and go to the cellar. There was no protection in the cellar, as the house was new and there were no partitions. Another man had come to help, and each one stationed at a window

controlled every part of the cellar. Still they kept on shooting. Mr. Carpenter, bleeding and full of their bullets, left the cellar by the outside steps, and fell in the backyard. Mrs. Carpenter fell over him, covering him, her arms about his head. The two assassins appeared and raising her arms, gave the fatal shot, then left to join the departing forces. Mrs. Carpenter said, "They have fired the house," so I put out the fire.

It was one of the most terrible tragedies in all the dreadful work of that day – that dreadful day. I climbed a high fence that I never could have climbed except under great excitement, calling at the top of my voice for help, but there was no response until the band had all left. Left what? One hundred fifty men killed, 150 buildings burned, and a million and a half of property destroyed. Left – no pen can tell!

When I should have finished my visit Mr. Morse was to come for me some Friday and preach for Doctor Cordley the following Sunday. He came that dreadful Friday, about three hours after Quantrill had left. On his way he heard of Mr. Carpenter's death. A rude box was made by our friends, and Mr. Carpenter's body was laid in the yard.

Friday night came, the most terrible night I ever spent. Fires were burning all over the town. The smoke was suffocating, and the barking and howling of dogs helped to make the night frightful. There was no sleep that night. In "Pioneer Days" Doctor Cordley wrote, "So we laid our dead away and turned our attention to the living."

The Sunday following we held a service in the old stone Congregational church. There was a large congregation, mostly women and children. Some of the men were in shirt-sleeves, not having saved even a coat, women in sunbonnets, some with hoods or shawls or handkerchiefs over their heads. Many of the women were newly-made widows, there with their fatherless children. There was a brief devotional service, but no sermon. I do not recall [what was said] except the scripture lesson read by Mr. Morse. It was the 79th Psalm. Everyone was startled when he read it. It seemed to have been written for the occasion. Mr. Morse seemed as much inspired in choosing it as the author in writing it.

"Oh God, the heathen are come into thine inheritance. The dead bodies of thy servants have they given to be meat unto the fowls of the heaven; the flesh of thy saints unto the beasts of the earth. Their blood have they shed like water round about Jerusalem, and there was none to bury them."

The congregation went away in silence.

CONTACT: Dr. Sam Dicks, 620-341-6431
July 24, 2001

Media Relations Home Page

Copyright © 2000 - Emporia State University.

Page updated: July 24, 2001.

If you have questions or comments about the material on this page,
please contact Leslie Eikleberry at eiklebel@emporia.edu.

AN HISTORICAL SOCIETY DEMISE

-----Original Message-----

From: Sandi Gorin [mailto:sgorin@glasgow-ky.com]

Sent: Thursday, November 06, 2003 6:43 AM

To: KYRESEARCH-L@rootsweb.com

Subject: TIP #466 - A TOAST TO THE LATE GREAT HISTORICAL SOCIETY

TIP #466 - A TOAST TO THE LATE GREAT HISTORICAL SOCIETY

What? Now that I've gotten your attention, let me pass on my condolences to the memory of many of the historical societies across the United States.

"Wait a minute, " you say, "there are still historical societies!" Ah yes, but how many of them are in the following nearly condition?

1 - Low attendance. Where many used to fill the seats at the monthly historical or genealogical society

meeting, now just the faithful few manage to make it to hear the speaker for the evening?

2 - Lackluster meetings. Remember the stimulating and thought provoking meetings of the past?

Excellent speakers that had you taking minutes, asking questions and learning techniques? Or no

speakers, non-genealogical, non-historical, non-promoted get-togethers?

3 - Arthritis syndrome. What is the average age of our memberships? Over 50? Over 60? Over 70? Where

are the historical and genealogical experts of the future in our county?

4 Abundance of monies: dread of spending. How many years have many of our societies been meeting? Over 20 years, maybe 40 or more? Been collecting dues and having fund raisers all these years? What has been done with the money? Is it sitting in a bank account, bored to tears? Why isn't it being used to do something to preserve the past for the future?

5 - Family feuds. We all like to say that our genealogical friends are like family don't we? "Cousins"

even. Why then are so many historical societies always in an uproar? Squabbling over little things.

Not wanting to change anything because it worked in the past just fine.

6 - Not connected? Not wired? Afraid to venture out into the cyberworld? Still typing your quarterlies on stencils?

7 - Ingrown officers? Same people doing the same thing with the same attitudes year after year? No new

officers with progressive ideas? Can't find a president if you paid them?

If you saw your historical society in any of the above questions, we might be bidding you adieu in the near future. If your society is vibrant, growing and active, you can skip this tip all together.

As I meet and correspond with societies all across the United States, I hear more and more of the above complaints. Many good, solid, old societies are literally imploding. Why? There are several reasons that I have discovered and they are hidden in the questions above.

Once upon the time in the dark past, the county or area historical society was one of the most vibrant and well attending meetings in town. Yes, there were some that thought us weird for wanting to go to meetings about dead people, cemeteries and old buildings. But on the whole, the historical society was a trusted organization whose meetings were well covered by the press and brought out many of the finest people. Meetings were varied and active.

But we failed to do a few things. We ignored the younger people. We became so in love with ourselves that it started to be "our society", and while guests were always welcome, they were not sought after.

Then the school systems on large began to take less interest in history. Where history, ancient and American, was required every year in "grade school" (my generation's term), and at least a year or so in high school; now it isn't always offered, or is an elective. Our younger generation is losing contact with its past.

Next came the ever-moving society. Where in older times, if we were born in a town, we grew up in that town, we went to school in that town, we married in that town, we raised our children in that town. We had contact with our parents, grandparents, often great-grandparents, aunts, uncles and cousins by the dozens. Story telling was an evening tradition and we heard tales of our family and how it was in the "good old days." We had roots and

they went deep. We knew most everyone in town and likely all about their lives too. We saw the patriotic parades, the honor paid to veterans, heard the church bells ringing and visited over the back fence. Today? We move and move and move. Oh, it's not all bad, my daughters and I have lived in 5 states and 13 houses in the last 29 years. We've made friends, left friends, learned cultures. But at one time we were in one state, my parents in another, cousins and aunts and uncles in another and we hadn't seen some of our family for 20 years! Now many are gone and it's too late to ask them about their memories. We just end up feeling connected to nothing, afraid really to put down those roots because it's hard digging them up again.

And finally, came the internet. Instead of reading microfilm and going prematurely into bifocals; driving all over to visit courthouses and try to find a relative in some little town, we log on the internet and let us take us to far away places. Bad? No! But can you speak out loud to your computer? Can you make the connection with your family as closely as sitting across from the couch with a glass of lemonade?

Progress is wonderful. But the average historical society has not kept pace. Many are dying and they have no idea they are terminal. How long has it been since you've been to your local historical society meeting? (I understand that some people are homebound and can't attend, or there is no one close; you are excused). How many times have you volunteered for a project - even suggested one? Even if you are not from the area where you live now and have no ties, join in with a society and give them some fresh blood and fresh ideas.

Programs are difficult to put together. Sometimes in a smaller community there are not the good speakers that are willing to come out on a rainy or snowy night. Have you thought of maybe paying them to come? Remember all that money in the bank rotting away - we can't take it with us. Investigate some professional genealogical or historical speakers who do charge a fee and dip into the funds a tad. If there's no one that qualifies professionally - what about the older generation? You know the older we get, the more we like to remember (before we can't remember anymore), and we have some wonderful tales of earlier days. Have you thought of asking Granny Jones or Cousin Lum to come and just talk to the society? Tape them, video them, invite the kids!

How do you get more members? It is harder now. We have the internet, cable tv, fast moving cars and planes, kids in every organization and sport imaginable and there's little time for anything else in our life. But if you build the field, they will come! Plan something special for your society that can involve the community, young and old. Picnics, homecomings, old-time pictures, old time crafts show with some of the older or more talented people in the community demonstrating how it used to be done.

Don't fight the internet, use it! No queries anymore in your quarterly?

Most of us are zipping out emails by the hundreds to get (hopefully) instant response. We are a "give it to me and give it to me now" people anymore. We can't wait for snail mail, or waiting until the quarterly comes out with your query. Have you considered articles in your quarterly on "how to do internet genealogy"? Or even a beginning computer course at a library or someplace with other computer access. Bring some of the younger generation in to help the older generation learn. I correspond via email with several individuals in their 90's! You're not too old to learn.

And lastly, back to money. There's security in a big bank account but it's not helping anything or anyone. Could your society help restore a historic building? Do a historical survey of old structures? Set up a walking or driving tour of the area? Donate to a society or organization that IS doing something and needing funds of a historical nature - maybe even a humanitarian nature? Build a house with Habitat for Humanity? Put on a genealogical symposium, a genealogical book fair? Put together a video production of the area for local television? Write columns for the local paper? Volunteer at the next meeting even if you are a novice but want to learn?

We must start growing and taking our vitamins or we're "out of here" as the youngsters say. We will be delegated to the old newspapers our children and grandchildren will be reading in years to come. We serve a useful purpose, or we used to? Do we still?

For those reading this tip who are members or officers of a growing and vibrant society, my hat's off to you. Keep it that way!

(c) Copyright 6 November 2003, All Rights Reserved.

Colonel Sandi Gorin

SCK Y Links: <http://www.public.asu.edu/~moore/Gorin.html>

SCK Y surname registry sites: <http://www.rootsweb.com/~kyclinto/reg.html>

<http://www.rootsweb.com/~kyclinto/forms/SCK Yreg.html>

Gorin Publishing: <http://ggpublishing.tripod.com/>

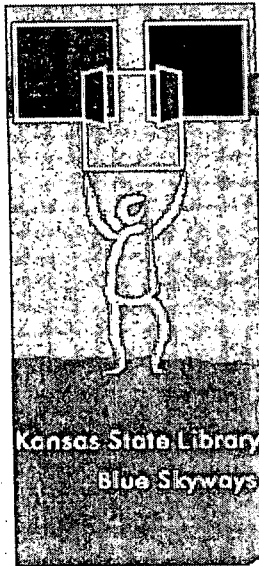
==== KYRESEARCH Mailing List ====

~~~~~  
Search KYRESEARCH Archives:

<http://listsearches.rootsweb.com/cgi-bin/listsearch.pl?list=KYRESEARCH>

Browse KYRESEARCH Archives:

<http://archiver.rootsweb.com/th/index/KYRESEARCH/>  
~~~~~



Kansas Library Card

Frequently Asked Questions | Login Help

Kansas Library Card (KSLC) Frequently Asked Questions

1. What is the Kansas Library Card?

The new Kansas Library Card is a tool for remote electronic access to high quality information and research resources.

2. How do I get a Kansas Library Card?

Apply in person at your local library or school. Many libraries and schools in Kansas participate in the Kansas Library Card program. The library or school may require some proof of your residency. The staff will use a computer to enter your full name and date of birth into the Kansas Library Card database. They will write or type your PIN on the front of a Kansas Library Card, and the date of issuance on the back of the card. You will then need to sign the back of the card in the space provided. The card is then ready for you to use.

3. How does the Kansas Library Card Work?

The card comes with a personal identification number (PIN) written on the front. This PIN, together with the cardholder's date of birth, allows the cardholder to login to the Kansas Library Card system (<http://www.kslc.org>) using any computer with Internet access.

4. What is the Kansas Library Card used for?

The KSLC provides access to the following research databases:

- o FirstSearch
- o InfoTrac
- o NetLibrary E-Books
- o SIRS Discoverer Deluxe (for grades K-12)
- o Heritage Quest
- o Literature Resource Center
- o Custom Newspapers
- o Proquest Nursing Journals
- o WorldBook

5. Where can I use the Kansas Library Card?

The KSLC remote access program is intended for use at home or when you're away from your school or local library. Kansas academic, public, and school libraries should apply for direct access to the databases (via IP recognition, etc.) rather than use the KSLC program for in-library database access.

6. What does the Kansas Library Card cost?

The card is a free service of the Kansas Library Network Board, the Kansas State Library, and the University of Kansas Medical Center.

7. When does a Kansas Library Card expire?

Each card will automatically expire in one year from the date it was issued.

8. How do I renew my Kansas Library Card?

Simply go to your nearest participating library or school with your proof of Kansas residency. Many participating libraries and media centers display the Kansas Library Card logo. The staff will renew your account.

9. Who can get a Kansas Library Card?

Any resident of Kansas can apply for a Kansas Library Card. Participating libraries and schools may require some proof of residency before issuing the card.

10. Is there an age limit for the Kansas Library Card?

No, the card is available to all Kansas residents. However, very young Kansans will likely need a parent or guardian to furnish proof of their residency. And online digital resources will be of little use to young residents who have not learned to read or type.

11. How is the Kansas Library Card used?

The Kansas Library Card will work with any computer with Internet access and Web browser Internet Explorer or Netscape version 4.0 or better set to accept cookies. Point your browser to the Internet address on the front of the card (www.kslc.org), then key in your PIN and date of birth. Then click on the "Login" button. Your browser will take you to a Web page with links to the digital resources available to Kansas Library Card holders. Click on each link you wish to use. When you are finished, point your Web browser to any site other than the Kansas Library Card homepage. That will conclude your Kansas Library Card session.

12. Can I use the Kansas Library Card to check out books, magazines, tapes, videos, CDs, DVDs, or other library materials?

No, the Kansas Library Card is a tool to access digital information only. It cannot be used for borrowing physical materials of any kind.

13. What do I do if my Kansas Library Card is lost or stolen?

Return to your nearest participating library or school to report it and apply for a new card.

14. Will my use of the Kansas Library Card be monitored?

Your name, date of birth, and Kansas Library Card PIN are the only personal information kept on the Kansas Library Card computer.

Privacy statement: Activity data incurred by use of the Kansas Library Card for remote access to online databases is collected. Such data is collected to determine the usefulness of the card. Personal information will be kept confidential to the extent of the law."

15. How much of the information available with the Kansas Library Card is useful to non-English language readers?

All of the help information on the Kansas Library Card web site (www.kslc.org) is available in Spanish (<http://www.kslc.org/?MIval=spanish>). The databases at Infotrac include Informé, a Spanish-language database. The FirstSearch interface and online help files are available in Spanish and French as well as in English.

16. Where do I login to access the databases?

After obtaining a KSLC account, you can login to the KSLC web site at <http://www.kslc.org>

I've lost my pin number - who should I contact?

Contact your local library to retrieve your pin number.

I receive an error message when attempting to login. Who should I contact for help?

Contact your local library to verify that your account is valid and that you have entered the correct login information. Please note that your library card account must be renewed annually. Visit your local library or participating school media center to renew your account for another year.

Your library may ask you for the following information to help you troubleshoot the problem:

- What is the exact error message you receive?
- What is the URL (web address) of the page you are trying to login at?
- What web browser and version you are using? You can find out what browser version you are using by selecting the 'Help' menu located at the top of your browser window, and then choose the 'About' option.
Note: to access the KSLC service, your browser must be either Netscape or Internet Explorer version 4.0 or higher, and it must accept cookies.
- Your Name, KSLC PIN number, birthdate, and e-mail address or telephone number.

Unresolved problems will be forwarded to the technical staff at the University of Kansas Medical Center.

More questions? Contact:

Eric Hansen
Executive Director
Kansas Library Network Board
300 SW 10th
Avenue, Room 343-N
Topeka, KS 66612-1593
800-432-3919 (Toll-free)
785-296-3875 (Voicemail)
785-296-6650 (fax)
eric@kslib.info

DESCENDANT OF BABY DOE TABOR (The Face on the Barroom Floor)

This was found in some papers of Fay Moys , a longtime resident of Lawrence.

This is an article from the Lawrence Journal World by Larry Stroup. There was not a date available but it would be before 1983.

KU play is special for local woman by Larry Stroup.

Not very often can you sit before an opera and watch a relative's life unfold before your eyes. But Miss Fay Moys of 620 Kentucky will do just that Tuesday night, March 8.

Miss Moys is the great niece of Horace A.W. Tabor, upon whose life "The Ballad of Baby Doe" is based. She is the first known relative ever to view the opera.

It will be presented March 8, 10 and 11 at 8pm in University Theatre, Music and Dramatic Arts Building at Kansas university.

Horace Austin Warner Tabor, known at the peak of his fame as H.A.W., was a stonecutter in his native Vermont before he came to Kansas more than 100 years ago. Born Nov. 26, 1830, in Holland, Vt., he joined a free soil group, and arrived in Kansas in 1856, with his prim and practical New England wife, Augusta. Tabor settled in Riley County, and while there served as a member of the Topeka Legislature, which was dispersed by order of President Franklin Pierce. The Tabors moved to Denver in 1859 and in the following year to California Gulch (now Leadville).

While H.A.W. hunted for gold and dreamed of wealth, Augusta remained realistic. The lavish life Tabor sought did not appeal to her.

After 20 years of poverty, Horace made his fortune in Leadville by purchasing an interest in the Little Pittsburgh silver mine. With a bonanza strike in the Little Pittsburgh, everything he had and touched turned to wealth.

At the end of 1879 he sold his interest in the mine for \$1 million and bought the Matchless Mine for about \$10,000 and purchased half interest in the First National Bank in Denver. He was netting \$100,000 a month at the time.

About this time, Baby Doe, moved to Leadville. Born in Oshkosh, Wis., she was ambitious as well as beautiful and had married the mayor's son, Harvey Doe. He failed to make their Central City, Colo., mine pay off and spent more and more time in beer halls. Eventually, Baby Doe left him.

She was just 20 and at the height of her beauty when she moved to Leadville. Having heard about fiftyish Tabor and his millions she immediately engineered a "chance" meeting.

They did meet, and Tabors wife, who would not accept his wealth, drew more and more apart from Tabor. Finally, H.A.W. arranged a divorce and was granted a secret one in Durango. Baby Doe and H.A.W. were married secretly in St. Louis in 1882. They returned to Leadville where the local society turned against him in protest of this treatment of Augusta.

Tabor gained more and more wealth. But financial troubles began for him during the panic of 1893 and the struggle over free gold and silver coinage. His fortune collapsed completely in 1896, after his attempt at backing William Jennings Bryan for the presidency on a "Free Silver" platform. An almost joyful Denver expected Baby Doe to leave him immediately. But she remained loyal, not only through his lifetime but until her own death on March 7, 1935, when she was found frozen to death on the floor of her cabin at the Matchless Mine.

Tabor had died penniless in 1899.

Perhaps generations here do not recall the Tabor name, but H.A.W.'s kinfolk played a part in the early settlement of Lawrence. H.A.W.'s sister, Emily Jane Moys (and Miss Moys grandmother) resided in Lawrence for 63 years.

Mrs. Moys and her husband, William Moys, a soldier of the Civil War, settled in Lawrence. He died Nov. 5, 1869, as a result of wounds received during the war, leaving Mrs. Moys to care for their four children.

Mrs. Moys died at her home in Lawrence on May 15, 1920. She had been among the first to come to Kansas, and like others of that early day, came with the avowed intention to make Kansas a free state. They arrived in Lawrence on April 7, 1857, just three years after the city was founded on a steamboat from Kansas City.

Miss Moys dug into the family history to produce a record of a letter her grandmother had written concerning Lawrence.

Mrs. Moys wrote:

"I arrived in Lawrence April 7, 1857. I have no need to tell you of what Lawrence was at that time. I came with my two brothers, John and H.A.W. and their wives...

"...It was one of those days that wind blew as it did many times in Kansas, a perfect gale all day. My brother said "This is the beauty of Kansas, we always have a breeze." I was one of the party that came on the steamboat 'Lightfoot' from Quindaro (near present day Kansas City, Kans.) To Lawrence. These Kansas breezes kept us three days on this trip - a breeze took our boat near the shore, a tree tore down the smoke stack, and our rations were low but now happy we were when we caught the first glimpse of Lawrence. The citizens here, I guess were nearly all on the banks of the Kaw ready to give us a royal welcome. They had a little cannon which they fired as a salute, and those of us who could sing went on deck and sang, 'The Kansas Emigrant Song'.

"The first night I stayed in Kansas I stayed at the home of Mrs. Haskell (mother of Senator D.C. Haskell).

"The next day I went to my brother's home, a cabin covered with bark near the lake (Lakeview).

Miss Moys recalled hearing that when Quantrill was reported heading for Lawrence, her

grandmother and family were living in the 400 block on Mississippi. "Grandmother put the two children in baby buggy and hurried to the hills west of town," Miss Moys said. The hills are those in the country club terrace area.

"Tabor was very kind to his sister. After her husband died, he returned to Lawrence and bought her a home at 331 Ind. St. and the lots around it," Miss Moys recounted. "My great uncle kept in touch with his sister. Baby Doe did too. Grandmother went to Colorado to visit them once," she related.

H.A.W.'s father, Cornelius Dunham Tabor, lived out his remaining years in Lawrence. He died July 13, 1888. in Denver while visiting his son. But was returned to Lawrence and is buried in Oak Hill Cemetery.

Miss Moys, a lifelong resident of Lawrence, is excited about seeing the opera. She has had arrangements made for opening night.

Miss Moys was in charge of the reserve desk at Watson Library on the KU campus for 20 years. She resigned in 1947. Among her many interests is painting in oils. A number of her paintings decorate the living room of her home.

Guest director from New York especially for the production is Bill Butler, a native Kansas, born in Eureka, Butler received his A.B. degree in English at UCLA, graduating cum laude.

The Broadway director is well known in New York for his work in both opera and theater. He has worked with the Phoenix Theater, New York City Opera, Santa Fe Opera and NBC-TV Opera on tour.

It was his work in Santa Fe with Kansas University's orchestra conductor Robert Baustian that led to the invitation to direct an opera production at KU.

The production has been designed by Herbert Camburn of the KU staff.

Leading roles in the cast of nearly fifty students are: Ron Highley, Kansas City Mo., senior as H.A.W. Tabot; Sharon Tebbenkamp, Salisbury, Mo., sophomore as Augusta Tabor; Mary Lou Powell, Topeka senior as Baby Doe;; and Janet Wagner, Belleville, Ill., sophomore as Mrs McCourt (Baby's mother).

DOUGLAS COUNTY LAND OWNERS, 1857

This information was on a floppy disk from past times. We don't know who transcribed it but it looked useful.

NAME	LEGAL DESCRIPTION
ADAMS, C.A.	NE 1/4 Sec. of Sec. 3, Range 13, Township 19
ADAMS, G.	SE 1/4 Sec. of Sec. 23, Range 12, Township 19
ADAMS, M.	NW 1/4 Sec. of Sec. 24, Range 12, Township 19
AIKEN, R.	SW 1/4 Sec. of Sec. 22, Range 13, Township 18
ALGIER, N.	NW 1/4 Sec. of Sec. 23, Range 13, Township 18
ALLEN, A.	NE 1/4 Sec. of Sec. 14, Range 13, Township 19
ALLEN, J.	SE 1/4 Sec. of Sec. 32, Range 13, Township 19
ALLEN, R.	NW 1/4 Sec. of Sec. 22, Range 12, Township 19
ALLEN, R.	SW 1/4 Sec. of Sec. 11, Range 13, Township 19
ALWARD, A.A.	SE 1/4 Sec. of Sec. 13, Range 15, Township 19
ANDERSON, J.	NE 1/4 Sec. of Sec. 27, Range 13, Township 18
ANDERSON, J.	SW 1/4 Sec. of Sec. 3, Range 13, Township 20
ANDERSON, L.G.	SE 1/4 Sec. of Sec. 3, Range 13, Township 20
ANDERSON, L.G.	NW 1/4 Sec. of Sec. 10, Range 13, Township 20
ANDERSON, O.W.	NW 1/4 Sec. of Sec. 27, Range 13, Township 18
ANDERSON, S.	SE 1/4 Sec. of Sec. 13, Range 13, Township 21
ANDERSON, T.	SW 1/4 Sec. of Sec. 23, Range 12, Township 18
ANTRIM, A.H.	SE 1/4 Sec. of Sec. 5, Range 13, Township 18
APPLEMAN, H.	NW 1/4 Sec. of Sec. 3, Range 14, Township 19
APPLEWHITE, C.	SE 1/4 Sec. of Sec. 35, Range 12, Township 17
ARCHIBALD, E.	NE 1/4 Sec. of Sec. 16, Range 13, Township 18
ARCHIBALD, J.C.	NW 1/4 Sec. of Sec. 15, Range 13, Township 18
ARLEY (CURLEY), G.W.	SW 1/4 Sec. of Sec. 1, Range 12, Township 18
ARMSTRONG, _____	NW 1/4 Sec. of Sec. 28, Range 13, Township 19
ASHBY, B.	NE 1/4 Sec. of Sec. 18, Range 15, Township 20
ASHBY, J.H.	SE 1/4 Sec. of Sec. 7, Range 15, Township 20
ATHERTON, H.	NW 1/4 Sec. of Sec. 1, Range 13, Township 19
AULES(DULES), M.	NE 1/4 Sec. of Sec. 35, Range 12, Township 17
BABCOCK, C.J.	NW 1/4 Sec. of Sec. 6, Range 13, Township 20
BACKERS (BACKERSON), T.	NE 1/4 Sec. of Sec. 1, Range 13, Township 18
BACKERS, _____	SE 1/4 Sec. of Sec. 10, Range 15, Township 19
BACKERSON (BACKERS), T.	NE 1/4 Sec. of Sec. 1, Range 13, Township 18
BAILEY, J.C.	NW 1/4 Sec. of Sec. 13, Range 12, Township 19
BAILY, F.A.	NE 1/4 Sec. of Sec. 19, Range 12, Township 19
BAILY, J.B.	NW 1/4 Sec. of Sec. 11, Range 12, Township 18
BAKER, I.L.	NE 1/4 Sec. of Sec. 1, Range 15, Township 19
BAKER, P.	SE 1/4 Sec. of Sec. 10, Range 15, Township 19
BAKERS, _____	NE 1/4 Sec. of Sec. 12, Range 15, Township 19
BALDWIN, H.L.	NE 1/4 Sec. of Sec. 29, Range 14, Township 20
BALDWIN, H.S.	NE 1/4 Sec. of Sec. 28, Range 13, Township 18
BALL, F.	SE 1/4 Sec. of Sec. 13, Range 12, Township 19
BALNY, W.	SE 1/4 Sec. of Sec. 7, Range 12, Township 18
BANDLOW, F.	NE 1/4 Sec. of Sec. 29, Range 14, Township 20
BANM, W.	SE 1/4 Sec. of Sec. 27, Range 13, Township 18
BANNING, J.	NE 1/4 Sec. of Sec. 1, Range 12, Township 17
BANNING, L.	NE 1/4 Sec. of Sec. 13, Range 12, Township 17
BANNING, W.F.	NW 1/4 Sec. of Sec. 18, Range 12, Township 17
BARBER, _____	SE 1/4 Sec. of Sec. 36, Range 12, Township 18
BARBER, M.	SE 1/4 Sec. of Sec. 14, Range 13, Township 18
BARBER, Oliver	NW 1/4 Sec. of Sec. 13, Range 12, Township 18
BARBER, T.	NW 1/4 Sec. of Sec. 13, Range 13, Township 18
BARICKLAW, O.	NW 1/4 Sec. of Sec. 35, Range 14, Township 20
BARICKLAW, W.	NE 1/4 Sec. of Sec. 33, Range 14, Township 20
BARKER, B.	NW 1/4 Sec. of Sec. 6, Range 12, Township 19

DOUGLAS COUNTY ORIGINAL LAND OWNERS

NAME	LEGAL DESCRIPTION
BARLEY, J.A.	SW 1/4 Sec. of Sec. 12, Range 14, Township 19
BARNER, R.A.	NE 1/4 Sec. of Sec. 21, Range 13, Township 18
BARNES, W.E.	SW 1/4 Sec. of Sec. 10, Range 14, Township 20
BARNET, L.	SW 1/4 Sec. of Sec. 3, Range 12, Township 18
BARRICKLAW, H.	SE 1/4 Sec. of Sec. 33, Range 14, Township 20
BARTLET, J.C.	NW 1/4 Sec. of Sec. 5, Range 13, Township 19
BASSET, R.T.	SW 1/4 Sec. of Sec. 8, Range 13, Township 20
BASSINGERS, _____	SE 1/4 Sec. of Sec. 6, Range 14, Township 20
BEAM, J.A.	SE 1/4 Sec. of Sec. 32, Range 13, Township 18
BEAM, L.J.	NE 1/4 Sec. of Sec. 4, Range 14, Township 20
BEAN, O.	SE 1/4 Sec. of Sec. 26, Range 13, Township 18
BECKER, W.	NE 1/4 Sec. of Sec. 32, Range 12, Township 19
BELL, A.	SW 1/4 Sec. of Sec. 17, Range 13, Township 19
BELL, O.W.	SW 1/4 Sec. of Sec. 18, Range 14, Township 20
BELLEMY, B.	SW 1/4 Sec. of Sec. 8, Range 12, Township 18
BENNET, E.W.	NW 1/4 Sec. of Sec. 12, Range 14, Township 19
BEREA0(?), F.	SE 1/4 Sec. of Sec. 29, Range 13, Township 19
BERRY, G.W.	SW 1/4 Sec. of Sec. 14, Range 13, Township 19
BERRYFIELD, W.	SE 1/4 Sec. of Sec. 10, Range 14, Township 20
BERRYFIELD, W.	NW 1/4 Sec. of Sec. 12, Range 15, Township 20
BIOLY, D.	SE 1/4 Sec. of Sec. 18, Range 12, Township 19
BIRLY, W.	SE 1/4 Sec. of Sec. 15, Range 13, Township 18
BLACKS, M.	SW 1/4 Sec. of Sec. 9, Range 15, Township 20
BLACKWOOD, R.J.	NW 1/4 Sec. of Sec. 35, Range 14, Township 19
BLANTON, H.B.	NW 1/4 Sec. of Sec. 19, Range 13, Township 20
BOADMIAN, G.C.	NW 1/4 Sec. of Sec. 29, Range 12, Township 17
BOHNIER, G.	SE 1/4 Sec. of Sec. 7, Range 12, Township 18
BOSS, O.W.	NW 1/4 Sec. of Sec. 1, Range 13, Township 19
BOWEN, D.E.	NE 1/4 Sec. of Sec. 22, Range 13, Township 19
BOYD, J.A.	SW 1/4 Sec. of Sec. 31, Range 12, Township 19
BOYLES, R.L.	SE 1/4 Sec. of Sec. 31, Range 12, Township 19
BRACKETT, G.L.	SW 1/4 Sec. of Sec. 22, Range 12, Township 19
BRANDON, _____	SW 1/4 Sec. of Sec. 4, Range 11, Township 19
BRANDON, _____	SW 1/4 Sec. of Sec. 4, Range 12, Township 19
BRANSON, J.	NW 1/4 Sec. of Sec. 20, Range 14, Township 20
BREESE, T.	SE 1/4 Sec. of Sec. 12, Range 14, Township 19
BRODBER, J.	NE 1/4 Sec. of Sec. 24, Range 14, Township 19
BRODNELY, S.	NE 1/4 Sec. of Sec. 35, Range 15, Township 35
BROOKS, A.	SW 1/4 Sec. of Sec. 10, Range 11, Township 19
BROOKS, Dr.	NE 1/4 Sec. of Sec. 22, Range 12, Township 18
BROOKS, G.D.	NE 1/4 Sec. of Sec. 34, Range 14, Township 20
BROOKS, M.	NW 1/4 Sec. of Sec. 23, Range 12, Township 18
BROOKS, W.C.	SW 1/4 Sec. of Sec. 28, Range 14, Township 19
BROOKS, W.W.	NW 1/4 Sec. of Sec. 27, Range 13, Township 19
BROWERS, J.P.	SE 1/4 Sec. of Sec. 22, Range 14, Township 20
BROWN, D.	NE 1/4 Sec. of Sec. 23, Range 14, Township 19
BROWN, Z.C.(Z.G.)	NE 1/4 Sec. of Sec. 26, Range 13, Township 17
BROWN, Z.G.(Z.C.)	NE 1/4 Sec. of Sec. 26, Range 13, Township 17
BROWNER, J.	SW 1/4 Sec. of Sec. 12, Range 15, Township 19
BRYANT, D.	NE 1/4 Sec. of Sec. 23, Range 13, Township 18
BRYANT, J.V.	SE 1/4 Sec. of Sec. 23, Range 13, Township 18
BUFFUM, D.C.	NW 1/4 Sec. of Sec. 31, Range 12, Township 19
BURGESS, H.A.	E 1/2 Sec. of Sec. 29, Range 13, Township 20
BURLINGAME, M.J.	SE 1/4 Sec. of Sec. 25, Range 12, Township 18

DOUGLAS COUNTY ORIGINAL LAND OWNERS

NAME	LEGAL DESCRIPTION
BURLY, W.	SW 1/4 Sec. of Sec. 15, Range 13, Township 18
BURNET, L.	SW 1/4 Sec. of Sec. 31, Range 14, Township 20
BURNET, T.	NW 1/4 Sec. of Sec. 29, Range 11, Township 18
BURR, N.	NW 1/4 Sec. of Sec. 25, Range 14, Township 19
BURRIS, J.	NW 1/4 Sec. of Sec. 24, Range 13, Township 19
BUSH, W.H.	SE 1/4 Sec. of Sec. 22, Range 12, Township 19
BUTCHER, H.	SE 1/4 Sec. of Sec. 13, Range 14, Township 18
BUTEL, C.	NW 1/4 Sec. of Sec. 7, Range 15, Township 20
CAFFLEMICY(?), R.B.	NE 1/4 Sec. of Sec. 20, Range 12, Township 18
CALDWELL, W.A.	NW 1/4 Sec. of Sec. 12, Range 12, Township 17
CALHOUN, C.	SE 1/4 Sec. of Sec. 33, Range 11, Township 18
CAMEL, J.B.	SE 1/4 Sec. of Sec. 11, Range 14, Township 18
CAMEL, J.B.	SW 1/4 Sec. of Sec. 12, Range 14, Township 18
CAMEL, J.S.	NW 1/4 Sec. of Sec. 13, Range 14, Township 18
CAMERON, H.	SW 1/4 Sec. of Sec. 14, Range 11, Township 19
CANTRELL, J.	SW 1/4 Sec. of Sec. 33, Range 14, Township 20
CARMEL(CORMEL), J.	SE 1/4 Sec. of Sec. 19, Range 13, Township 19
CARPENTER, J.E.	SE 1/4 Sec. of Sec. 9, Range 15, Township 20
CARSON, A.J.	SE 1/4 Sec. of Sec. 26, Range 13, Township 17
CARTER(?), H.A.	SE 1/4 Sec. of Sec. 12, Range 14, Township 18
CARTER, E.	SE 1/4 Sec. of Sec. 34, Range 12, Township 20
CARTER, J.	SE 1/4 Sec. of Sec. 34, Range 13, Township 20
CARTER, R.S.	NE 1/4 Sec. of Sec. 31, Range 13, Township 19
CARTLEW, R.	NE 1/4 Sec. of Sec. 12, Range 14, Township 18
CARVET(?), W.	NW 1/4 Sec. of Sec. 34, Range 11, Township 18
CASBIER, C.	NE 1/4 Sec. of Sec. 22, Range 13, Township 18
CASBIER, D.J.	SE 1/4 Sec. of Sec. 21, Range 13, Township 18
CASBIER, S.B.	NW 1/4 Sec. of Sec. 22, Range 13, Township 18
CATHER, M.	NE 1/4 Sec. of Sec. 31, Range 12, Township 18
CATHER, M.	NE 1/4 Sec. of Sec. 29, Range 11, Township 18
CHAMBERLAIN, J.(?)	NE 1/4 Sec. of Sec. 11, Range 12, Township 17
CHAMBERLIN(?)< F.C.	NW 1/4 Sec. of Sec. 11, Range 15, Township 19
CHAMOND(HAMOND), F.A.	SW 1/4 Sec. of Sec. 1, Range 14, Township 19
CHAPMAN, T.	NW 1/4 Sec. of Sec. 23, Range 14, Township 20
CHAPON, G.W.	NE 1/4 Sec. of Sec. 31, Range 13, Township 18
CHILDS, C.H.	NE 1/4 Sec. of Sec. 26, Range 12, Township 18
CHILDS, L.	SE 1/4 Sec. of Sec. 22, Range 14, Township 19
CHURCHILL, G.	NW 1/4 Sec. of Sec. 27, Range 12, Township 19
CLARK, BEN	SW 1/4 Sec. of Sec. 7, Range 12, Township 18
CLARK, E.	SE 1/4 Sec. of Sec. 25, Range 12, Township 19
CLARK, T.H.	NE 1/4 Sec. of Sec. 12, Range 12, Township 17
CLAUS, JOHN	NW 1/4 Sec. of Sec. 33, Range 11, Township 18
CLAYTON, M.	SW 1/4 Sec. of Sec. 32, Range 13, Township 18
CLELEND, W.	SE 1/4 Sec. of Sec. 32, Range 12, Township 19
CLOUGH, M.R.	NW 1/4 Sec. of Sec. 9, Range 13, Township 19
COFFEY, J.A.	SW 1/4 Sec. of Sec. 18, Range 13, Township 20
COLBY(?), BARBARA W.	SW 1/4 Sec. of Sec. 33, Range 12, Township 19
COLEMAN, A.	NE 1/4 Sec. of Sec. 29, Range 14, Township 20
COLLINS, T.J.	SW 1/4 Sec. of Sec. 23, Range 13, Township 17
COMBEST, H.	SW 1/4 Sec. of Sec. 29, Range 12, Township 19
COMBEST, H.	SE 1/4 Sec. of Sec. 14, Range 11, Township 19
COMPTON, J.	NE 1/4 Sec. of Sec. 25, Range 14, Township 19
CONLEY, A.W.	NW 1/4 Sec. of Sec. 9, Range 13, Township 18
CONLEY, P.W.	NW 1/4 Sec. of Sec. 9, Range 12, Township 17

DOUGLAS COUNTY ORIGINAL LAND OWNERS

NAME	LEGAL DESCRIPTION
CONLEY, W.	SE 1/4 Sec. of Sec. 19, Range 13, Township 18
CONNELLY, T.	SW 1/4 Sec. of Sec. 27, Range 14, Township 20
CORDWELL, W.A.	NW 1/4 Sec. of Sec. 7, Range 12, Township 18
COREL, W.	SE 1/4 Sec. of Sec. 32, Range 12, Township 20
CORMEL(CARMEL), J.	SE 1/4 Sec. of Sec. 19, Range 13, Township 19
COTTER(CUTTER)(CUTLER), W.C.	SE 1/4 Sec. of Sec. 9, Range 14, Township 19
COTTER, A.	NW 1/4 Sec. of Sec. 22, Range 13, Township 19
CRAGGS, L.W.	NW 1/4 Sec. of Sec. 26, Range 13, Township 17
CRANE, C.S.	NW 1/4 Sec. of Sec. 14, Range 13, Township 19
CRANE, J.H.	NE 1/4 Sec. of Sec. 15, Range 15, Township 18
CRANE, J.L.	NW 1/4 Sec. of Sec. 8, Range 13, Township 20
CRANE, L.	NE 1/4 Sec. of Sec. 21, Range 14, Township 20
CRANE, S.	SW 1/4 Sec. of Sec. 31, Range 11, Township 18
CRANE, S.	SW 1/4 Sec. of Sec. 15, Range 13, Township 20
CRANE, S.	SE 1/4 Sec. of Sec. 10, Range 13, Township 20
CRARRY	SW 1/4 Sec. of Sec. 6, Range 14, Township 20
CROCKET, E.	NE 1/4 Sec. of Sec. 30, Range 12, Township 19
CROCKET, L.	NE 1/4 Sec. of Sec. 30, Range 12, Township 19
CROCKETT, P.	SE 1/4 Sec. of Sec. 31, Range 11, Township 18
CROW(?), M.	NE 1/4 Sec. of Sec. 37, Range 11, Township 17
CUMMINS, J.	NW 1/4 Sec. of Sec. 21, Range 14, Township 20
CUMMINS, W.	NW 1/4 Sec. of Sec. 24, Range 14, Township 20
CUNNINGHAM, J.	SW 1/4 Sec. of Sec. 4, Range 13, Township 18
CURBY, W.T.	NE 1/4 Sec. of Sec. 18, Range 12, Township 18
CURFEW, J.A.	SE 1/4 Sec. of Sec. 15, Range 13, Township 19
CURLEY(ARLEY), G.W.	SW 1/4 Sec. of Sec. 1, Range 12, Township 18
CURTIS, A.	NE 1/4 Sec. of Sec. 26, Range 13, Township 18
CURTIS, E.	SE 1/4 Sec. of Sec. 30, Range 13, Township 20
CUSTARD, A.J.	NW 1/4 Sec. of Sec. 14, Range 12, Township 17
CUTLER(CUTTER)(COTTER), W.C.	SE 1/4 Sec. of Sec. 19, Range 19, Township 19
CUTTER(CUTLER)(COTTER), W.C.	SE 1/4 Sec. of Sec. 19, Range 19, Township 19
CUTTLE, Geo.	NW 1/4 Sec. of Sec. 15, Range 14, Township 20
DAVIDSON, J.	SE 1/4 Sec. of Sec. 11, Range 14, Township 19
DAVIDSON, J.	NW 1/4 Sec. of Sec. 2, Range 13, Township 19
DAVIDSON, N.	SE 1/4 Sec. of Sec. 22, Range 13, Township 20
DAVIS, B.	SE 1/4 Sec. of Sec. 9, Range 11, Township 19
DAVIS, E.	SW 1/4 Sec. of Sec. 19, Range 13, Township 20
DAVIS, Isaak	NE 1/4 Sec. of Sec. 26, Range 13, Township 18
DAVIS, M.F.	SW 1/4 Sec. of Sec. 35, Range 13, Township 18
DAVIS, S.H.	SE 1/4 Sec. of Sec. 10, Range 14, Township 19
DAVIS, T.	NE 1/4 Sec. of Sec. 4, Range 14, Township 19
DAVIS, T.D.	SW 1/4 Sec. of Sec. 35, Range 13, Township 19
DAY, J.	SW 1/4 Sec. of Sec. 23, Range 12, Township 19
DEAN, J.	SE 1/4 Sec. of Sec. 20, Range 13, Township 18
DEAN, R.A.	SE 1/4 Sec. of Sec. 28, Range 13, Township 18
DEFENDER, E.	NE 1/4 Sec. of Sec. 28, Range 11, Township 18
DEITZLER, G.W.	NE 1/4 Sec. of Sec. 26, Range 12, Township 19
DELAND, E.A.	NE 1/4 Sec. of Sec. 17, Range 13, Township 21
DELL, A.W.	SW 1/4 Sec. of Sec. 21, Range 13, Township 19
DENNIS, L.B.	NW 1/4 Sec. of Sec. 13, Range 13, Township 19
DERBY, J.	NW 1/4 Sec. of Sec. 28, Range 13, Township 20
DEXTER, S.	SW 1/4 Sec. of Sec. 26, Range 14, Township 20
DICKSON, C.	SE 1/4 Sec. of Sec. 25, Range 13, Township 19
DIEHL, A.	NW 1/4 Sec. of Sec. 5, Range 12, Township 18

DOUGLAS COUNTY ORIGINAL LAND OWNERS

NAME	LEGAL DESCRIPTION
DISBROW(DISHROW), E.	NE 1/4 Sec. of Sec. 18, Range 13, Township 18
DISHROW(DISBROW), E.	NE 1/4 Sec. of Sec. 18, Range 13, Township 18
DOBBINS, _____	NW 1/4 Sec. of Sec. 3, Range 13, Township 20
DOCK, R.	NW 1/4 Sec. of Sec. 18, Range 12, Township 19
DOLITTLE, B.E.	NW 1/4 Sec. of Sec. 32, Range 13, Township 20
DOOLITTLE, S.A.	NE 1/4 Sec. of Sec. 31, Range 13, Township 20
DOYLE, M.	NW 1/4 Sec. of Sec. 29, Range 14, Township 19
DRAPER, W.	SW 1/4 Sec. of Sec. 23, Range 13, Township 18
DREXLER, F.	NE 1/4 Sec. of Sec. 7, Range 12, Township 17
DRUMMER(?), R.W.	SE 1/4 Sec. of Sec. 6, Range 12, Township 18
DUFFLEGE, D.	SW 1/4 Sec. of Sec. 17, Range 12, Township 18
DULES(AULES), M.	NE 1/4 Sec. of Sec. 35, Range 12, Township 17
DUNBAR, H.	NE 1/4 Sec. of Sec. 21, Range 13, Township 20
DUNCAN, G.W.(O.W.)	SE 1/4 Sec. of Sec. 12, Range 12, Township 17
DUNCAN, O.W.(G.W.)	SE 1/4 Sec. of Sec. 12, Range 12, Township 17
DUNDSON, M.	SE 1/4 Sec. of Sec. 11, Range 14, Township 19
DUNMARS, J.	SE 1/4 Sec. of Sec. 17, Range 14, Township 20
DUNN, J.M.	SW 1/4 Sec. of Sec. 28, Range 13, Township 18
DUNN, Ray	SE 1/4 Sec. of Sec. 32, Range 13, Township 18
EARHART, D.	NE 1/4 Sec. of Sec. 10, Range 13, Township 18
EASTERBROOK, L.L.	NW 1/4 Sec. of Sec. 5, Range 14, Township 20
EDWARDS, John	SW 1/4 Sec. of Sec. 13, Range 12, Township 18
EDWARDS, T.	NE 1/4 Sec. of Sec. 25, Range 12, Township 18
EGGARD, H.	SW 1/4 Sec. of Sec. 9, Range 13, Township 20
EGLEHALL, J.	SW 1/4 Sec. of Sec. 2, Range 14, Township 19
ELDRIDGES, _____	SE 1/4 Sec. of Sec. 34, Range 14, Township 20
ELIAS, G.	NW 1/4 Sec. of Sec. 6, Range 15, Township 20
ELLINGTON, P.	SW 1/4 Sec. of Sec. 8, Range 12, Township 18
ELLIOT, J.	SE 1/4 Sec. of Sec. 14, Range 14, Township 19
ELLISON, T.D.	NW 1/4 Sec. of Sec. 14, Range 12, Township 18
EMERY, _____	SW 1/4 Sec. of Sec. 36, Range 12, Township 19
EMORY, C.C.	NW 1/4 Sec. of Sec. 29, Range 12, Township 19
ENOS, H.L.	NE 1/4 Sec. of Sec. 5, Range 13, Township 20
EPLEY, J.	SE 1/4 Sec. of Sec. 9, Range 13, Township 20
ESKRIDGE, C.V.	NW 1/4 Sec. of Sec. 18, Range 13, Township 20
EVANS, J.C.	SE 1/4 Sec. of Sec. 18, Range 3, Township 19
EVANS, J.L.	SW 1/4 Sec. of Sec. 2, Range 14, Township 18
EVENS, S.A.	NW 1/4 Sec. of Sec. 19, Range 13, Township 19
EVENS, W.	NE 1/4 Sec. of Sec. 5, Range 13, Township 19
EVERHART, J.	NE 1/4 Sec. of Sec. 11, Range 14, Township 19
EVERHART, L.	NE 1/4 Sec. of Sec. 10, Range 14, Township 19
EVERS, J.B.D.	NW 1/4 Sec. of Sec. 9, Range 12, Township 18
FAGERS, _____	NW 1/4 Sec. of Sec. 27, Range 14, Township 20
FALLEY, E.P.	SW 1/4 Sec. of Sec. 17, Range 14, Township 20
FARMONT, R.	SE 1/4 Sec. of Sec. 10, Range 14, Township 20
FARR, C.H.	SW 1/4 Sec. of Sec. 32, Range 14, Township 20
FARRAN, J.	SW 1/4 Sec. of Sec. 11, Range 14, Township 19
FAXON, A.A.	NW 1/4 Sec. of Sec. 35, Range 12, Township 18
FELAND, T.J.	NW 1/4 Sec. of Sec. 18, Range 14, Township 20
FELLOWS, M.F.	SE 1/4 Sec. of Sec. 11, Range 13, Township 19
FERRIS, F.(W.?) J.	NE 1/4 Sec. of Sec. 32, Range 12, Township 19
FILER, S.	SW 1/4 Sec. of Sec. 22, Range 13, Township 19
FISH, J. Peter	NE 1/4 Sec. of Sec. 20, Range 13, Township 18
FISHER, A.H.	SW 1/4 Sec. of Sec. 21, Range 14, Township 20

DOUGLAS COUNTY ORIGINAL LAND OWNERS

NAME	LEGAL DESCRIPTION
FLANDERS, A.	SE 1/4 Sec. of Sec. 28, Range 13, Township 20
FLORA, M.	SW 1/4 Sec. of Sec. 11, Range 13, Township 20
FOGLE, C.B.	NW 1/4 Sec. of Sec. 23, Range 12, Township 17
FURGERSON, L.	SE 1/4 Sec. of Sec. 26, Range 12, Township 19
GAMINS, R.A.	NE 1/4 Sec. of Sec. 10, Range 13, Township 19
GARDNER, J.	SE 1/4 Sec. of Sec. 30, Range 13, Township 19
GARRY, J.B.	NW 1/4 Sec. of Sec. 30, Range 12, Township 19
GARVIN(GARVON), T.B.	NE 1/4 Sec. of Sec. 3, Range 13, Township 20
GARVON(GARVIN), T.B.	NE 1/4 Sec. of Sec. 3, Range 13, Township 20
GATES, A.	NW 1/4 Sec. of Sec. 25, Range 12, Township 19
GATES, A.S.	SE 1/4 Sec. of Sec. 35, Range 13, Township 19
GELAN, P.	SE 1/4 Sec. of Sec. 2, Range 12, Township 17
GIBSON, S.	SW 1/4 Sec. of Sec. 20, Range 13, Township 20
GILBERT, C.	SW 1/4 Sec. of Sec. 2, Range 13, Township 19
GILBINS, J.	SW 1/4 Sec. of Sec. 5, Range 14, Township 20
GILL, G.	SE 1/4 Sec. of Sec. 33, Range 13, Township 20
GINGERICK, J.S.	SE 1/4 Sec. of Sec. 7, Range 13, Township 20
GIST, J.	SW 1/4 Sec. of Sec. 9, Range 13, Township 19
GLEASON, J.H.	NW 1/4 Sec. of Sec. 13, Range 14, Township 19
GLEASON, S.	NE 1/4 Sec. of Sec. 13, Range 14, Township 19
GLENN, A.	SW 1/4 Sec. of Sec. 5, Range 12, Township 18
GLENN, W.	N 1/2 Sec. of Sec. 5, Range 11, Township 18
GOODIN, J.R.	SE 1/4 Sec. of Sec. 14, Range 13, Township 19
GRAHAM, J.	NW 1/4 Sec. of Sec. 11, Range 14, Township 21
GRAHAM, J.	NW 1/4 Sec. of Sec. 9, Range 15, Township 20
GRAHAM, J.M.	NE 1/4 Sec. of Sec. 8, Range 13, Township 19
GRAHAM, W.	NW 1/4 Sec. of Sec. 17, Range 15, Township 20
GRAY, Isaac	NE 1/4 Sec. of Sec. 15, Range 15, Township 21
GREEN, L.E.	NE 1/4 Sec. of Sec. 32, Range 14, Township 20
GREEN, W.F.	SE 1/4 Sec. of Sec. 32, Range 14, Township 20
GRIFFITH, D.	NW 1/4 Sec. of Sec. 2, Range 14, Township 19
GRIFFITH, E.	NE 1/4 Sec. of Sec. 26, Range 13, Township 19
GRIFFITH, J.R.	NE 1/4 Sec. of Sec. 2, Range 14, Township 19
GROAT, M.	NW 1/4 Sec. of Sec. 18, Range 13, Township 20
GROTON, G.W.	NE 1/4 Sec. of Sec. 20, Range 12, Township 19
GROVER, J.	NE 1/4 Sec. of Sec. 11, Range 13, Township 19
HACKMAN, J.A.	W 1/2 Sec. of Sec. 9, Range 11, Township 19
HAGIN, J.	NE 1/4 Sec. of Sec. 22, Range 13, Township 20
HAGN, W.	NW 1/4 Sec. of Sec. 15, Range 15, Township 19
HAGNSON, E.D.	SW 1/4 Sec. of Sec. 21, Range 12, Township 19
HALBERT, D.C.	SW 1/4 Sec. of Sec. 31, Range 13, Township 19
HALL, G.	NW 1/4 Sec. of Sec. 28, Range 12, Township 19
HAMILSERA(?), C.	SW 1/4 Sec. of Sec. 3, Range 13, Township 18
HAMOND(CHAMOND), F.A.	SW 1/4 Sec. of Sec. 1, Range 14, Township 19
HAMPTON, W.B.	SE 1/4 Sec. of Sec. 14, Range 12, Township 18
HANCOCK, H.A.	SW 1/4 Sec. of Sec. 1, Range 13, Township 19
HANCOCK, J.	SW 1/4 Sec. of Sec. 10, Range 12, Township 18
HANSON, B.A.	NE 1/4 Sec. of Sec. 6, Range 13, Township 20
HARMAN, W.H.	SE 1/4 Sec. of Sec. 31, Range 12, Township 18
HARRINGTON, C.	SE 1/4 Sec. of Sec. 32, Range 12, Township 17
HARRIS, W.B.	NW 1/4 Sec. of Sec. 8, Range 15, Township 20
HARRISON, J.H.	NW 1/4 Sec. of Sec. 21, Range 12, Township 19
HARRISON, J.W.	NW 1/4 Sec. of Sec. 21, Range 12, Township 19
HARVEY, C.	NW 1/4 Sec. of Sec. 4, Range 14, Township 19

DOUGLAS COUNTY ORIGINAL LAND OWNERS

NAME	LEGAL DESCRIPTION
HASKEL, F.	SW 1/4 Sec. of Sec. 32, Range 12, Township 20
HASKEL, L.	NW 1/4 Sec. of Sec. 17, Range 13, Township 20
HAWKINS,(?), _____	NW 1/4 Sec. of Sec. 14, Range 11, Township 19
HAYES, J.	SW 1/4 Sec. of Sec. 2, Range 13, Township 19
HAYS, A.G.	SE 1/4 Sec. of Sec. 13, Range 14, Township 19
HAYWOOD, D.H.	NE 1/4 Sec. of Sec. 34, Range 12, Township 19
HAZLETINE, D.P.	NE 1/4 Sec. of Sec. 11, Range 13, Township 18
HAZLETINE, W.	SW 1/4 Sec. of Sec. 12, Range 13, Township 18
HAZLETINE, W.R.	SW 1/4 Sec. of Sec. 12, Range 12, Township 18
HEARNEY, M.	NW 1/4 Sec. of Sec. 4, Range 14, Township 19
HENDERSON, C.C.	SE 1/4 Sec. of Sec. 23, Range 12, Township 18
HENRY, G.	SW 1/4 Sec. of Sec. 13, Range 14, Township 19
HERD, T.R.	NW 1/4 Sec. of Sec. 26, Range 12, Township 18
HERRINGTON, J.D.	NE 1/4 Sec. of Sec. 15, Range 13, Township 20
HETCHER, J.S.	NE 1/4 Sec. of Sec. 13, Range 15, Township 19
HICKS, J.W.	NE 1/4 Sec. of Sec. 5, Range 13, Township 18
HICKS, M.	NE 1/4 Sec. of Sec. 32, Range 11, Township 18
HILDERBRAND, J.	NW 1/4 Sec. of Sec. 30, Range 12, Township 18
HILL, E.	NE 1/4 Sec. of Sec. 6, Range 14, Township 20
HILL, F.	NW 1/4 Sec. of Sec. 34, Range 12, Township 19
HILL, J.B.	SE 1/4 Sec. of Sec. 23, Range 14, Township 19
HILL, P.W.	NE 1/4 Sec. of Sec. 26, Range 14, Township 19
HOCKER, N.	NW 1/4 Sec. of Sec. 19, Range 12, Township 19
HOFFER, H.F.	SW 1/4 Sec. of Sec. 6, Range 11, Township 18
HOFFMAN, C.B.	SE 1/4 Sec. of Sec. 30, Range 13, Township 18
HOING, H.	NW 1/4 Sec. of Sec. 28, Range 13, Township 18
HOLEWAY, C.	NW 1/4 Sec. of Sec. 26, Range 13, Township 19
HOLEWAY, C.	NW 1/4 Sec. of Sec. 26, Range 13, Township 19
HOLLOWELL, H.(?)	SW 1/4 Sec. of Sec. 12, Range 12, Township 17
HOLLOWELL, S.	NE 1/4 Sec. of Sec. 13, Range 12, Township 19
HOLLOWELL, W.H.	SW 1/4 Sec. of Sec. 12, Range 13, Township 17
HOOVER, L.W.	SE 1/4 Sec. of Sec. 24, Range 13, Township 19
HOPKINS, T.	NE 1/4 Sec. of Sec. 18, Range 14, Township 20
HOPPER, J.L.	SE 1/4 Sec. of Sec. 24, Range 12, Township 19
HORWITZ, G.	SE 1/4 Sec. of Sec. 1, Range 11, Township 18
HOVEY, W.L.	SW 1/4 Sec. of Sec. 6, Range 13, Township 20
HOWE, C.J.	SW 1/4 Sec. of Sec. 26, Range 13, Township 20
HOWELL, L.	NW 1/4 Sec. of Sec. 35, Range 13, Township 19
HUBBARD, A.H.	NE 1/4 Sec. of Sec. 21, Range 13, Township 19
HUDDLESTON, E.	SW 1/4 Sec. of Sec. 20, Range 13, Township 19
HUDSON, B.	NE 1/4 Sec. of Sec. 17, Range 14, Township 20
HUGER, D.	NW 1/4 Sec. of Sec. 24, Range 12, Township 18
HUGHES, R.	SW 1/4 Sec. of Sec. 17, Range 12, Township 19
HUGHES, W.	SE 1/4 Sec. of Sec. 17, Range 12, Township 18
HUGHES, J.	NW 1/4 Sec. of Sec. 14, Range 14, Township 19
HURD, C.	NW 1/4 Sec. of Sec. 1, Range 12, Township 18
HUTCHINSON, J.	SE 1/4 Sec. of Sec. 26, Range 12, Township 18
HUTT, J.B.	NE 1/4 Sec. of Sec. 7, Range 14, Township 20
HYATT, J.	SW 1/4 Sec. of Sec. 20, Range 13, Township 18
IRWIN, R.	NW 1/4 Sec. of Sec. 22, Range 13, Township 20
JACKSON, G.	NW 1/4 Sec. of Sec. 14, Range 15, Township 18
JACKSON, J.M.	NE 1/4 Sec. of Sec. 14, Range 14, Township 19
JACOBS, Moses	NW 1/4 Sec. of Sec. 11, Range 14, Township 18
JAMES, E.L.	SE 1/4 Sec. of Sec. 4, Range 13, Township 18

DOUGLAS COUNTY ORIGINAL LAND OWNERS

NAME	LEGAL DESCRIPTION
JAMES, E.L.	SE 1/4 Sec. of Sec. 4, Range 12, Township 17
JENKINS, G.	NE 1/4 Sec. of Sec. 36, Range 12, Township 19
JESICK, W.	SW 1/4 Sec. of Sec. 13, Range 13, Township 18
JEWETT, E.T.	NW 1/4 Sec. of Sec. 36, Range 12, Township 18
JIMSON, J.	NE 1/4 Sec. of Sec. 34, Range 12, Township 20
JOHNSON, J.	SW 1/4 Sec. of Sec. 21, Range 14, Township 18
JOHNSON, O.(?)	SE 1/4 Sec. of Sec. 20, Range 14, Township 20
JOHNSON, W.	SW 1/4 Sec. of Sec. 28, Range 14, Township 20
JOHNSON, W.	SW 1/4 Sec. of Sec. 32, Range 12, Township 17
JOHNSTON, E.B.	NE 1/4 Sec. of Sec. 16, Range 13, Township 20
JONES, D.	NE 1/4 Sec. of Sec. 32, Range 12, Township 20
JONES, D.B.	SW 1/4 Sec. of Sec. 24, Range 12, Township 17
JONES, J.	SE 1/4 Sec. of Sec. 17, Range 13, Township 19
JONES, J.L.	NE 1/4 Sec. of Sec. 28, Range 12, Township 17
JONES, M.	NW 1/4 Sec. of Sec. 10, Range 14, Township 20
JONES, M.J.	NE 1/4 Sec. of Sec. 25, Range 13, Township 18
JONES, O.T.	SE 1/4 Sec. of Sec. 27, Range 14, Township 20
JONES, P.	NE 1/4 Sec. of Sec. 23, Range 13, Township 19
JONES, S.(?)	SW 1/4 Sec. of Sec. 1, Range 11, Township 18
JONES, W.	NE 1/4 Sec. of Sec. 9, Range 13, Township 20
JONES, W.	SW 1/4 Sec. of Sec. 28, Range 13, Township 20
JONES, W.L.	SE 1/4 Sec. of Sec. 15, Range 15, Township 21
JORDON, T.	NE 1/4 Sec. of Sec. 7, Range 15, Township 20
JUSTIS, W.	NE 1/4 Sec. of Sec. 12, Range 13, Township 18
KEANBOY(?), O.P.	SW 1/4 Sec. of Sec. 26, Range 13, Township 19
KELLER, A.	NW 1/4 Sec. of Sec. 20, Range 13, Township 18
KELLER, I.	SE 1/4 Sec. of Sec. 8, Range 12, Township 19
KELLY, S.	SW 1/4 Sec. of Sec. 3, Range 14, Township 20
KELSO, M.L.	NW 1/4 Sec. of Sec. 32, Range 13, Township 18
KENICK, J.H.	SW 1/4 Sec. of Sec. 5, Range 13, Township 19
KENNEDY, J.R.	NE 1/4 Sec. of Sec. 27, Range 13, Township 19
KENNEDY, L.J.	SW 1/4 Sec. of Sec. 34, Range 13, Township 19
KENNEDY, M.	SW 1/4 Sec. of Sec. 23, Range 13, Township 19
KENNEDY, W.B.	NE 1/4 Sec. of Sec. 19, Range 13, Township 20
KEURNY(KEURRY), Levi	NW 1/4 Sec. of Sec. 36, Range 13, Township 18
KEURRY(KEURNY), Levi	NW 1/4 Sec. of Sec. 36, Range 13, Township 18
KILCAUGHAM, W.	SW 1/4 Sec. of Sec. 12, Range 13, Township 19
KIMBEL, C.H.	SW 1/4 Sec. of Sec. 19, Range 13, Township 18
KING, A.W.	NW 1/4 Sec. of Sec. 20, Range 14, Township 20
KING, A.W.	SW 1/4 Sec. of Sec. 20, Range 14, Township 20
KING, T.	SE 1/4 Sec. of Sec. 12, Range 15, Township 19
KITCHINGMAN, W.	NE 1/4 Sec. of Sec. 19, Range 12, Township 18
KLANS, W.	SE 1/4 Sec. of Sec. 5, Range 11, Township 18
KNIGHT, L.H.	SW 1/4 Sec. of Sec. 22, Range 14, Township 20
KONGWERTH(KONGWORTH?), J.T.	SE 1/4 Sec. of Sec. 24, Range 12, Township 17
KONGWORTH(KONGWERTH?), J.T.	SE 1/4 Sec. of Sec. 24, Range 12, Township 17
KOSTER, W.B.	SW 1/4 Sec. of Sec. 14, Range 15, Township 18
KOZY, D.	SE 1/4 Sec. of Sec. 11, Range 13, Township 18
LACKETT, G.	SW 1/4 Sec. of Sec. 1, Range 15, Township 18
LACY, H.B.	SE 1/4 Sec. of Sec. 29, Range 12, Township 19
LAHAY, A.E.	SE 1/4 Sec. of Sec. 8, Range 13, Township 19
LAHAY, F.E.	NE 1/4 Sec. of Sec. 17, Range 13, Township 19
LAHAY, J.D.	SW 1/4 Sec. of Sec. 8, Range 13, Township 19
LAHAY, S.	SW 1/4 Sec. of Sec. 17, Range 13, Township 19

DOUGLAS COUNTY ORIGINAL LAND OWNERS

NAME	LEGAL DESCRIPTION
LANE, J.	NW 1/4 Sec. of Sec. 29, Range 13, Township 20
LANHAM, W.	SE 1/4 Sec. of Sec. 20, Range 12, Township 19
LAPHAN, G.S.	SE 1/4 Sec. of Sec. 30, Range 12, Township 19
LAUM, Adastus	S 1/2 Sec. of Sec. 7, Range 13, Township 19
LAUTY(LOOTY), S.M.	SE 1/4 Sec. of Sec. 6, Range 13, Township 18
LAWRENCE, B.M.	SW 1/4 Sec. of Sec. 25, Range 13, Township 18
LAWRENCE, D.K.	SE 1/4 Sec. of Sec. 23, Range 12, Township 17
LAWRENCE, J.K.	SW 1/4 Sec. of Sec. 23, Range 12, Township 17
LAWRENCE, T.	SE 1/4 Sec. of Sec. 33, Range 13, Township 19
LEAGE, C.	SW 1/4 Sec. of Sec. 7, Range 15, Township 20
LEARNARD, H.	NW 1/4 Sec. of Sec. 17, Range 12, Township 19
LECURS, D.W.	SW 1/4 Sec. of Sec. 10, Range 13, Township 18
LEWIS, G.	NE 1/4 Sec. of Sec. 23, Range 12, Township 18
LEWIS, H.	NE 1/4 Sec. of Sec. 21, Range 12, Township 18
LIVERMORE, W.	SW 1/4 Sec. of Sec. 30, Range 13, Township 20
LOCK, F.L.	SE 1/4 Sec. of Sec. 8, Range 14, Township 20
LONGFELLOW, C.	SE 1/4 Sec. of Sec. 12, Range 13, Township 19
LOOTY(LAUTY), S.M.	SE 1/4 Sec. of Sec. 6, Range 13, Township 18
LOUTY(LAUTY), S.M.	SE 1/4 Sec. of Sec. 6, Range 13, Township 18
LOVELACE, G.W.	SW 1/4 Sec. of Sec. 29, Range 13, Township 19
LOVELACE, J.	SW 1/4 Sec. of Sec. 32, Range 13, Township 19
LOWE, D.	NW 1/4 Sec. of Sec. 7, Range 13, Township 20
LUMDAN, E.A.	NW 1/4 Sec. of Sec. 27, Range 13, Township 20
LYKINS, Dr.	SW 1/4 Sec. of Sec. 14, Range 12, Township 19
LYKINS, Dr.	NW 1/4 Sec. of Sec. 23, Range 12, Township 19
LYKINS, Dr.	NE 1/4 Sec. of Sec. 22, Range 12, Township 19
LYNCH, A.H.	NE 1/4 Sec. of Sec. 1, Range 14, Township 18
LYNCH, L.B.	SW 1/4 Sec. of Sec. 1, Range 14, Township 18
LYON, T.M.	NW 1/4 Sec. of Sec. 33, Range 14, Township 20
LYON, T.W.	NW 1/4 Sec. of Sec. 4, Range 15, Township 20
LYON, W.	SE 1/4 Sec. of Sec. 20, Range 12, Township 19
MACA, J.N.	NE 1/4 Sec. of Sec. 29, Range 12, Township 19
MACESSAN, _____ (Chief Clerk)	
MACK(MOCK), D.	NW 1/4 Sec. of Sec. 12, Range 11, Township 19
MACK(MOCK), D.	NE 1/4 Sec. of Sec. 17, Range 12, Township 18
MAKEE(?), T.	SE 1/4 Sec. of Sec. 10, Range 15, Township 19
MALLERY, A.H.	SW 1/4 Sec. of Sec. 25, Range 12, Township 19
MARCUM S.	SW 1/4 Sec. of Sec. 2, Range 15, Township 19
MARKLEY, D.	NW 1/4 Sec. of Sec. 2, Range 12, Township 17
MARKS, _____	SE 1/4 Sec. of Sec. 5, Range 12, Township 19
MARROW, R.	NE 1/4 Sec. of Sec. 2, Range 13, Township 19
MARSHALL, Z.	NW 1/4 Sec. of Sec. 30, Range 13, Township 20
MARSHLAND, F.H.	NW 1/4 Sec. of Sec. 10, Range 11, Township 19
MARSHTON(?), R.H.	NE 1/4 Sec. of Sec. 10, Range 11, Township 19
MARTIN, O.	NE 1/4 Sec. of Sec. 34, Range 14, Township 19
MARTON, J.	SW 1/4 Sec. of Sec. 13, Range 15, Township 18
MARY, E.G.	NE 1/4 Sec. of Sec. 19, Range 13, Township 19
MASHIER, J.	NE 1/4 Sec. of Sec. 21, Range 14, Township 18
MASTIN(MOSTIN), John	NW 1/4 Sec. of Sec. 16, Range 14, Township 19
MATHEWS, D.P.	NE 1/4 Sec. of Sec. 31, Range 15, Township 20
MATHEWS, J.W.	NW 1/4 Sec. of Sec. 33, Range 12, Township 20
MATHEWS, S.W.	SE 1/4 Sec. of Sec. 32, Range 13, Township 20
MATNEY, H.	NW 1/4 Sec. of Sec. 10, Range 14, Township 19
MATNEY, R.R.	SW 1/4 Sec. of Sec. 10, Range 14, Township 19

DOUGLAS COUNTY ORIGINAL LAND OWNERS

NAME	LEGAL DESCRIPTION
MAUPES(MAUPUS), W.	SW 1/4 Sec. of Sec. 26, Range 13, Township 17
MAUPUS(MAUPES), W.	SW 1/4 Sec. of Sec. 26, Range 13, Township 17
MAXWELL, M.	NE 1/4 Sec. of Sec. 18, Range 12, Township 19
MAYFIELD, C.	SW 1/4 Sec. of Sec. 11, Range 14, Township 21
MAYFIELD, C.	SW 1/4 Sec. of Sec. 11, Range 15, Township 19
MAYFIELD, R.	NE 1/4 Sec. of Sec. 11, Range 15, Township 19
MAYFIELD, W.L.	NE 1/4 Sec. of Sec. 15, Range 13, Township 19
McCELLANS, S.	NW 1/4 Sec. of Sec. 28, Range 12, Township 17
McCLUNG, A.	SE 1/4 Sec. of Sec. 24, Range 13, Township 17
McCOWEN, T.	SW 1/4 Sec. of Sec. 13, Range 15, Township 19
McCULLON, W.	SE 1/4 Sec. of Sec. 7, Range 14, Township 20
McDONA, _____	NE 1/4 Sec. of Sec. 7, Range 12, Township 19
McFADDER, J.	NE 1/4 Sec. of Sec. 10, Range 14, Township 18
McFARLAND, B.	SE 1/4 Sec. of Sec. 9, Range 13, Township 20
McFARLAND, J.	NW 1/4 Sec. of Sec. 9, Range 13, Township 20
McFARLAND, T.	SW 1/4 Sec. of Sec. 15, Range 13, Township 20
McGALE, M.C.	SW 1/4 Sec. of Sec. 1, Range 12, Township 18
McGEE, A.N.	SE 1/4 Sec. of Sec. 4, Range 13, Township 20
McGEE, J.	SW 1/4 Sec. of Sec. 4, Range 14, Township 20
McGEE, J.J.	NE 1/4 Sec. of Sec. 4, Range 13, Township 20
McGEE, J.T.	SW 1/4 Sec. of Sec. 7, Range 14, Township 19
McGEE, James	SW 1/4 Sec. of Sec. 4, Range 13, Township 20
McGEE, Jos.	SW 1/4 Sec. of Sec. 4, Range 15, Township 20
McGEE, Susanna	NW 1/4 Sec. of Sec. 4, Range 13, Township 20
McGEE, T.S.	SE 1/4 Sec. of Sec. 33, Range 12, Township 20
McGEE, T.S.	SE 1/4 Sec. of Sec. 33, Range 12, Township 20
McJOHNSON, J.	SW 1/4 Sec. of Sec. 13, Range 13, Township 19
McKATHY(McKATTY), E.	SE 1/4 Sec. of Sec. 27, Range 12, Township 20
McKATTY(McKATHY), E.	SE 1/4 Sec. of Sec. 27, Range 12, Township 20
McLAUREY, S.	SE 1/4 Sec. of Sec. 8, Range 13, Township 18
McLEAN, L.A.	NE 1/4 Sec. of Sec. 2, Range 15, Township 20
McLOTS, A.J.	NW 1/4 Sec. of Sec. 31, Range 13, Township 20
McLUATED, _____	SW 1/4 Sec. of Sec. 15, Range 13, Township 19
McNEAL, E.	NE 1/4 Sec. of Sec. 25, Range 13, Township 19
McOWEN, W.B.	NW 1/4 Sec. of Sec. 5, Range 14, Township 20
McPHERSON, J.B.F.	NE 1/4 Sec. of Sec. 13, Range 13, Township 18
MEARIS, W.	NE 1/4 Sec. of Sec. 24, Range 13, Township 19
MERCHANT, J.	SW 1/4 Sec. of Sec. 19, Range 12, Township 19
MESSINGER, A.	SE 1/4 Sec. of Sec. 35, Range 12, Township 18
MIC, J.	NE 1/4 Sec. of Sec. 7, Range 13, Township 20
MILLER, B.W.	SW 1/4 Sec. of Sec. 26, Range 12, Township 19
MILLER, G.	NW 1/4 Sec. of Sec. 35, Range 13, Township 21
MILLER, J.J.	SE 1/4 Sec. of Sec. 1, Range 13, Township 18
MITCHELL, J.T.	SW 1/4 Sec. of Sec. 34, Range 11, Township 18
MIX, S.	NW 1/4 Sec. of Sec. 2, Range 14, Township 18
MOBERLY, A.W.	SE 1/4 Sec. of Sec. 27, Range 13, Township 20
MOCK(MACK), D.	NE 1/4 Sec. of Sec. 17, Range 12, Township 18
MOCK(MACK), D.	NW 1/4 Sec. of Sec. 12, Range 11, Township 19
MONROE, L.G.	SW 1/4 Sec. of Sec. 19, Range 13, Township 19
MOORE, A.	SW 1/4 Sec. of Sec. 14, Range 15, Township 19
MOORE, B.	SE 1/4 Sec. of Sec. 1, Range 12, Township 17
MOORE, I.	SW 1/4 Sec. of Sec. 7, Range 12, Township 18
MOORE, J.T.	SW 1/4 Sec. of Sec. 7, Range 14, Township 19
MOORE, Marc.	NW 1/4 Sec. of Sec. 9, Range 12, Township 19

DOUGLAS COUNTY ORIGINAL LAND OWNERS

NAME	LEGAL DESCRIPTION
MOORE, R.P.	NW 1/4 Sec. of Sec. 20, Range 13, Township 20
MOREHEAD, J.	SW 1/4 Sec. of Sec. 17, Range 13, Township 20
MORGAN, J.	NE 1/4 Sec. of Sec. 1, Range 13, Township 19
MORGAN, N.W.	E 1/2 Sec. of Sec. 29, Range 13, Township 20
MOSS, H.	SW 1/4 Sec. of Sec. 5, Range 14, Township 18
MOSS, H.	SW 1/4 Sec. of Sec. 7, Range 14, Township 18
MOSS, John	NE 1/4 Sec. of Sec. 5, Range 14, Township 18
MOSTIN(MASTIN), John	NW 1/4 Sec. of Sec. 16, Range 14, Township 19
MULLETT, B.S.	NW 1/4 Sec. of Sec. 2, Range 15, Township 19
MUSSEY, J.A.	SE 1/4 Sec. of Sec. 17, Range 12, Township 19
MUZZY, H.	NW 1/4 Sec. of Sec. 20, Range 12, Township 19
NATE, _____	SW 1/4 Sec. of Sec. 35, Range 12, Township 19
NEAL, A.	SE 1/4 Sec. of Sec. 5, Range 13, Township 20
NEAL, J.	NE 1/4 Sec. of Sec. 8, Range 13, Township 20
NETTLESON, W.	SE 1/4 Sec. of Sec. 18, Range 14, Township 20
NEWCOMB, C.R.	NW 1/4 Sec. of Sec. 15, Range 13, Township 19
NEWHALL, M.	SE 1/4 Sec. of Sec. 34, Range 13, Township 19
NEWMAN, A.	NW 1/4 Sec. of Sec. 14, Range 15, Township 19
NEWMAN, H.	NW 1/4 Sec. of Sec. 6, Range 14, Township 20
NEWMON, C.	SW 1/4 Sec. of Sec. 31, Range 13, Township 20
NICHOLS, C.J.H.	SE 1/4 Sec. of Sec. 16, Range 15, Township 20
NICKELS, E.H.	SE 1/4 Sec. of Sec. 21, Range 13, Township 19
NIGHT, F.E.	SW 1/4 Sec. of Sec. 10, Range 13, Township 19
NOLAN, D.	SW 1/4 Sec. of Sec. 34, Range 12, Township 20
NOLAND, A.J.	SW 1/4 Sec. of Sec. 31, Range 12, Township 17
OAKLEY, J.H.	SW 1/4 Sec. of Sec. 21, Range 12, Township 18
OARSON, R.T.	NE 1/4 Sec. of Sec. 14, Range 13, Township 17
O'CONNERS, G.(?)	S 1/2 Sec. of Sec. 36, Range 14, Township 21
OGDEN, J.	SE 1/4 Sec. of Sec. 20, Range 13, Township 20
OGDEN, S.	NE 1/4 Sec. of Sec. 28, Range 13, Township 20
OLIVER, T.	SW 1/4 Sec. of Sec. 9, Range 12, Township 18
O'NEIL, A.	SE 1/4 Sec. of Sec. 1, Range 13, Township 17
OWEN, H.	NE 1/4 Sec. of Sec. 26, Range 14, Township 20
OWEN, Wm.	NE 1/4 Sec. of Sec. 37, Range 11, Township 17
OWENS, R.	SW 1/4 Sec. of Sec. 25, Range 13, Township 19
OWENS, W.T.	NW 1/4 Sec. of Sec. 8, Range 13, Township 19
PALMER, D.W.	NW 1/4 Sec. of Sec. 8, Range 14, Township 20
PARK, Mr.	SW 1/4 Sec. of Sec. 27, Range 13, Township 20
PARKS, J.M.	SE 1/4 Sec. of Sec. 21, Range 14, Township 20
PARSELL, C.H.	SW 1/4 Sec. of Sec. 27, Range 12, Township 19
PARSONS(PORSONS), S.W.	SE 1/4 Sec. of Sec 31, Range 13, Township 20
PARTRIDGE, J.	SE 1/4 Sec. of Sec. 27, Range 12, Township 18
PATHER, L.A.	SE 1/4 Sec. of Sec. 15, Range 13, Township 20
PATTERSON, W.M.	NW 1/4 Sec. of Sec. 11, Range 13, Township 19
PAUL, O.	SW 1/4 Sec. of Sec. 34, Range 12, Township 18
PEAK, Mrs.	NW 1/4 Sec. of Sec. 9, Range 11, Township 19
PEAKE, A.	NW 1/4 Sec. of Sec. 15, Range 12, Township 11
PEARSON, T.M.	NW 1/4 Sec. of Sec. 6, Range 13, Township 19
PEASE, C.A.(G.A.)	SE 1/4 Sec. of Sec. 33, Range 12, Township 19
PEASE, G.A.(C.A.)	SE 1/4 Sec. of Sec. 33, Range 12, Township 19
PETERGILL, H.	SE 1/4 Sec. of Sec. 4, Range 14, Township 20
PETTIBONE, J.	NE 1/4 Sec. of Sec. 34, Range 13, Township 20
PICK, Titus Wardon	SE 1/4 Sec. of Sec. 10, Range 11, Township 18
PIERCE, E.A.	SE 1/4 Sec. of Sec. 6, Range 13, Township 20

DOUGLAS COUNTY ORIGINAL LAND OWNERS

NAME	LEGAL DESCRIPTION
PIERSON, _____	SE 1/4 Sec. of Sec. 28, Range 14, Township 20
PIEVIE, G.W.	NE 1/4 Sec. of Sec. 2, Range 12, Township 18
PILLER, W.S.	SE 1/4 Sec. of Sec. 9, Range 13, Township 18
PINNEY, J.C.	SW 1/4 Sec. of Sec. 15, Range 14, Township 20
PORSONS(PARSONS), S.W.	SE 1/4 Sec. of Sec. 31, Range 13, Township 20
POTTER, O.	NW 1/4 Sec. of Sec. 33, Range 12, Township 19
POTTERSILL, H.	NE 1/4 Sec. of Sec. 4, Range 14, Township 20
POTTINGILL, O.	SW 1/4 Sec. of Sec. 14, Range 14, Township 20
POWERS, R.Y.	NW 1/4 Sec. of Sec. 26, Range 14, Township 20
PRATT, C.S.	NW 1/4 Sec. of Sec. 34, Range 13, Township 19
PRESTON, L.B.	SW 1/4 Sec. of Sec. 1, Range 14, Township 18
PRESTON, R.	SW 1/4 Sec. of Sec. 28, Range 14, Township 20
RAND, A.	SW 1/4 Sec. of Sec. 30, Range 12, Township 18
RANDOLPH, W.	SE 1/4 Sec. of Sec. 21, Range 1, Township 19
RANSON, Mr.	SW 1/4 Sec. of Sec. 36, Range 12, Township 18
RAWLEY, L.	NE 1/4 Sec. of Sec. 20, Range 13, Township 19
REARMES(REARMUS), W.	SW 1/4 Sec. of Sec. 33, Range 11, Township 18
REARMUS(REARMES), W.	SW 1/4 Sec. of Sec. 33, Range 11, Township 18
REED, J.	NE 1/4 Sec. of Sec. 14, Range 14, Township 18
REESE, D.	NE 1/4 Sec. of Sec. 11, Range 12, Township 18
RENICK, J.H.	SW 1/4 Sec. of Sec. 5, Range 13, Township 19
REYNOLDS, S.	NE 1/4 Sec. of Sec. 13, Range 13, Township 19
REYNOLDS, T.	SW 1/4 Sec. of Sec. 7, Range 13, Township 20
REYNOLDS, T.	SE 1/4 Sec. of Sec. 19, Range 14, Township 20
RICH, J.H.	SW 1/4 Sec. of Sec. 13, Range 14, Township 20
RICH, S.	NW 1/4 Sec. of Sec. 32, Range 14, Township 20
RICHARDSON, J.C.	NW 1/4 Sec. of Sec. 13, Range 13, Township 17
RIDDLE, G.W.	NW 1/4 Sec. of Sec. 5, Range 13, Township 18
ROBERT, J.	SE 1/4 Sec. of Sec. 2, Range 14, Township 19
ROBINSON, Dr. Chas.	SE 1/4 Sec. of Sec. 36, Range 12, Township 19
ROBINSON, T.	SE 1/4 Sec. of Sec. 22, Range 12, Township 19
ROBINSON, T.	NE 1/4 Sec. of Sec. 15, Range 12, Township 19
ROBINSON, W.B.	NW 1/4 Sec. of Sec. 17, Range 12, Township 18
RODERICK, A.	SE 1/4 Sec. of Sec. 1, Range 11, Township 18
RODMAN, J.	NW 1/4 Sec. of Sec. 3, Range 14, Township 20
ROE, J.	NE 1/4 Sec. of Sec. 22, Range 14, Township 20
ROE, W.	SE 1/4 Sec. of Sec. 15, Range 14, Township 20
ROHRBACKER, J.	NE 1/4 Sec. of Sec. 31, Range 12, Township 17
ROSS, P.A.	SW 1/4 Sec. of Sec. 5, Range 13, Township 18
RUSSELL, N.H.	SE 1/4 Sec. of Sec. 7, Range 14, Township 18
RUTHERFORD, R.W.	SW 1/4 Sec. of Sec. 1, Range 12, Township 17
RYAN, W.	SE 1/4 Sec. of Sec. 9, Range 13, Township 18
SABERDA, P.	SE 1/4 Sec. of Sec. 25, Range 12, Township 17
SACKER(SASKER), G.	SW 1/4 Sec. of Sec. 9, Range 12, Township 19
SAMPLE(SANPOINT), T.	SE 1/4 Sec. of Sec. 4, Range 15, Township 19
SANDERS, H.F.	NE 1/4 Sec. of Sec. 35, Range 14, Township 20
SANPOINT(SAMPLE), T.	SE 1/4 Sec. of Sec. 4, Range 15, Township 19
SANS(SONS), A.	SW 1/4 Sec. of Sec. 35, Range 12, Township 18
SARY, F.	SE 1/4 Sec. of Sec. 33, Range 12, Township 18
SASKER(SACKER), G.	SW 1/4 Sec. of Sec. 9, Range 12, Township 19
SATFERS, J.A.	NE 1/4 Sec. of Sec. 35, Range 13, Township 19
SAUNDERS, J.P.	NW 1/4 Sec. of Sec. 12, Range 14, Township 7
SAVAGE, F.	SE 1/4 Sec. of Sec. 3, Range 13, Township 18
SAVAGE, J.	NW 1/4 Sec. of Sec. 12, Range 13, Township 19

DOUGLAS COUNTY ORIGINAL LAND OWNERS

NAME	LEGAL DESCRIPTION
SAVAGE, R.	SE 1/4 Sec. of Sec. 3, Range 13, Township 19
SCAUTON(SCAUTON), R.	NE 1/4 Sec. of Sec. 8, Range 13, Township 18
SCOFIELD, C.C.	SE 1/4 Sec. of Sec. 8, Range 13, Township 18
SCOMMEL, O.	N 1/2 Sec. of Sec. 10, Range 13, Township 20
SCOMMEL, O.	SE 1/4 Sec. of Sec. 10, Range 13, Township 20
SCOTT, A.	NE 1/4 Sec. of Sec. 10, Range 14, Township 21
SCOUTON(SCAUTON), R.	NE 1/4 Sec. of Sec. 8, Range 13, Township 18
SEATON, T.	NE 1/4 Sec. of Sec. 8, Range 13, Township 20
SEBELIUS, H.	SE 1/4 Sec. of Sec. 18, Range 13, Township 20
SEYBERT, _____	NW 1/4 Sec. of Sec. 1, Range 13, Township 21
SHANNON, Gen.(Gov.)	SW 1/4 Sec. of Sec. 18, Range 12, Township 19
SHANNON, Gov,(Gen.)	SW 1/4 Sec. of Sec. 18, Range 12, Township 19
SHARE, J.	NW 1/4 Sec. of Sec. 13, Range 15, Township 19
SHARE, S.T.	NW 1/4 Sec. of Sec. 18, Range 15, Township 20
SHARP, S.	SW 1/4 Sec. of Sec. 3, Range 14, Township 18
SHEPHERD, J.M.	NW 1/4 Sec. of Sec. 23, Range 13, Township 19
SHEPMAN, N.	SW 1/4 Sec. of Sec. 5, Range 13, Township 20
SHERLEY, J.	NE 1/4 Sec. of Sec. 28, Range 11, Township 18
SHERLEY, W.	SW 1/4 Sec. of Sec. 32, Range 11, Township 18
SHERMAN(SHIPMAN), T.	NE 1/4 Sec. of Sec. 9, Range 14, Township 20
SHIPMAN(SHERMAN), T.	NE 1/4 Sec. of Sec. 9, Range 14, Township 20
SHULTZ, W.	SW 1/4 Sec. of Sec. 28, Range 12, Township 28
SIMPSON, H.M.	NE 1/4 Sec. of Sec. 33, Range 12, Township 19
SIMS, A.	SE 1/4 Sec. of Sec. 13, Range 13, Township 18
SIMSEN, D.O.	SE 1/4 Sec. of Sec. 3, Range 12, Township 19
SIPES, Wm.	NW 1/4 Sec. of Sec. 2, Range 13, Township 18
SIPES, Wm.	NE 1/4 Sec. of Sec. 3, Range 13, Township 18
SMITH, C.W.	NW 1/4 Sec. of Sec. 5, Range 13, Township 20
SMITH, E.W.	SE 1/4 Sec. of Sec. 4, Range 13, Township 19
SMITH, John	SW 1/4 Sec. of Sec. 14, Range 14, Township 19
SMITH, N.	SE 1/4 Sec. of Sec. 6, Range 12, Township 17
SMITH, S.	NW 1/4 Sec. of Sec. 9, Range 13, Township 19
SMITH, S.C.	NE 1/4 Sec. of Sec. 5, Range 14, Township 20
SMITH, T.D.	SE 1/4 Sec. of Sec. 16, Range 13, Township 20
SNOOKE, W.	NW 1/4 Sec. of Sec. 5, Range 15, Township 18
SOALE, W.	NW 1/4 Sec. of Sec. 4, Range 14, Township 20
SOCKER(SACKER), G.	SW 1/4 Sec. of Sec. 9, Range 12, Township 19
SOLOMAN, M.	NE 1/4 Sec. of Sec. 6, Range 14, Township 20
SONS(SANS), A.	SW 1/4 Sec. of Sec. 35, Range 12, Township 18
SOWERS, W.	NW 1/4 Sec. of Sec. 12, Range 15, Township 19
SPALDING	SW 1/4 Sec. of Sec. 20, Range 12, Township 19
SPALDING, N.	SW 1/4 Sec. of Sec. 21, Range 13, Township 20
SPICELY(SPIGELY), W.F.	SW 1/4 Sec. of Sec. 21, Range 14, Township 19
SPICER, John	SW 1/4 Sec. of Sec. 28, Range 12, Township 19
SPICER, Judge	SE 1/4 Sec. of Sec. 28, Range 12, Township 19
SPIGELY(SPICELY), W.F.	SW 1/4 Sec. of Sec. 21, Range 14, Township 19
SPURLOCK, _____	NE 1/4 Sec. of Sec. 33, Range 11, Township 18
SPURLOCK, F.	NW 1/4 Sec. of Sec. 32, Range 11, Township 18
STANFFER, J.W.	SE 1/4 Sec. of Sec. 32, Range 13, Township 18
STEELE, L.S.	NW 1/4 Sec. of Sec. 11, Range 14, Township 17
STEENS, C.	NW 1/4 Sec. of Sec. 32, Range 12, Township 20
STEENS, C.	S 1/2 Sec. of Sec. 32, Range 12, Township 20
STERRS(STORRS), N.S.	NW 1/4 Sec. of Sec. 21, Range 14, Township 19
STEVENS, G.	NW 1/4 Sec. of Sec. 8, Range 14, Township 19

DOUGLAS COUNTY ORIGINAL LAND OWNERS

NAME	LEGAL DESCRIPTION
STEVENS, H.	SW 1/4 Sec. of Sec. 36, Range 13, Township 19
STEWART, L.	NE 1/4 Sec. of Sec. 28, Range 12, Township 19
STILL, A.T.	NW 1/4 Sec. of Sec 3, Range 14, Township 20
STILL, J.M.	SW 1/4 Sec. of Sec. 22, Range 13, Township 20
STILL, J.W.	SE 1/4 Sec. of Sec. 4, Range 15, Township 20
STILL, T.E.	NE 1/4 Sec. of Sec. 4, Range 14, Township 20
STIPES(?), W.	NW 1/4 Sec. of Sec. 3, Range 12, Township 18
STOKES, E.	NW 1/4 Sec. of Sec. 30, Range 13, Township 19
STORRS(STERRS), N.S.	NW 1/4 Sec. of Sec. 21, Range 14, Township 19
STOVER, S.	SW 1/4 Sec. of Sec. 13, Range 12, Township 18
STOWE, B.	SE 1/4 Sec. of Sec. 34, Range 12, Township 18
STOWE, W.	NE 1/4 Sec. of Sec. 24, Range 12, Township 18
STUART, J.E.	NW 1/4 Sec. of Sec. 21, Range 13, Township 20
STUCK, J. Cooper	Civil Engineer, Lecompton, KS Surveyor General's Office
STULL, Isaac	NE 1/4 Sec. of Sec. 31, Range 12, Township 18
SUFFIELD, R.G.	SE 1/4 Sec. of Sec. 10, Range 13, Township 18
SURIGART, _____	NW 1/4 Sec. of Sec. 30, Range 13, Township 18
SUTTEE, J.D.	NW 1/4 Sec. of Sec. 3, Range 14, Township 19
SUTTER(SUTTON), J.	NE 1/4 Sec. of Sec. 17, Range 14, Township 19
SUTTER, P.	NW 1/4 Sec. of Sec. 3, Range 14, Township 19
SUTTER, P.	NW 1/4 Sec. of Sec. 3, Range 14, township 19
SUTTON(SUTTER), J.	NE 1/4 Sec. of Sec. 17, Range 14, Township 19
SWAIN, J.H.	NE 1/4 Sec. of Sec. 12, Range 13, Township 18
SWAN, E.	NW 1/4 Sec. of Sec. 2, Range 15, Township 20
SWISHER, F.M.	NW 1/4 Sec. of Sec. 1, Range 15, Township 19
SWOPE(?), Wm.	NE 1/4 Sec. of Sec. 8, Range 11, Township 19
SYKES, T.B.	SW 1/4 Sec. of Sec. 14, Range 12, Township 18
TACKET, H.	NW 1/4 Sec. of Sec. 14, Range 13, Township 18
TANSON, G.M.	NW 1/4 Sec. of Sec. 20, Range 12, Township 18
TAPHAM, F.	NE 1/4 Sec. of Sec. 26, Range 12, Township 19
TAPSEAT(TUPSEAT), M.	NW 1/4 Sec. of Sec. 10, Range 13, Township 18
TAYLOR, J.H.	SW 1/4 Sec. of Sec. 15, Range 12, Township 19
TAYLOR, M.W.	SE 1/4 Sec. of Sec. 13, Range 13, Township 19
TEFT, C.	SW 1/4 Sec. of Sec. 1, Range 14, Township 19
TETER, P.L.	SW 1/4 Sec. of Sec. 20, Range 14, Township 19
THALKELE(THALKELL), M.	SW 1/4 Sec. of Sec. 14, Range 12, Township 17
THALKELL(THALKELE), M.	SW 1/4 Sec. of Sec. 14, Range 12, Township 17
THOMAS, C.H.	NW 1/4 Sec. of Sec. 32, Range 12, Township 19
THOMAS, D.	SE 1/4 Sec. of Sec. 18, Range 12, Township 19
THOMAS, Mr.	NW 1/4 Sec. of Sec. 14, Range 12, Township 19
THOMAS, T.H.	NE 1/4 Sec. of Sec. 11, Range 12, Township 18
TIPTON, W.	SE 1/4 Sec. of Sec. 8, Range 15, Township 20
TITUS, Col.	NE 1/4 Sec. of Sec. 10, Range 12, Township 18
TOBER, J.F.	NE 1/4 Sec. of Sec. 15, Range 12, Township 19
TODD, A.D.	NE 1/4 Sec. of Sec. 20, Range 13, Township 20
TODHUNTER, T.R.	NE 1/4 Sec. of Sec. 14, Range 12, Township 18
TOILES, F.A.	SE 1/4 Sec. of Sec. 20, Range 13, Township 19
TOMSON, C.	SW 1/4 Sec. of Sec. 30, Range 13, Township 19
TOMSON, E.S.	NW 1/4 Sec. of Sec. 11, Range 13, Township 18
TOMSON, H.W.	NE 1/4 Sec. of Sec. 30, Range 13, Township 19
TOMSON, S.	NW 1/4 Sec. of Sec. 24, Range 13, Township 18
TONNELL, W.	NW 1/4 Sec. of Sec. 15, Range 14, Township 18
TOUNE(TOYNE), F.B.	SW 1/4 Sec. of Sec. 33, Range 13, Township 20
TOUTER(TOUTOR), G.W.	NE 1/4 Sec. of Sec. 15, Range 14, Township 19

DOUGLAS COUNTY ORIGINAL LAND OWNERS

NAME	LEGAL DESCRIPTION
TOUTOR(TOUTER), G.W.	NE 1/4 Sec. of Sec. 15, Range 14, Township 19
TOYNE(TOUNE), F.B.	SW 1/4 Sec. of Sec. 33, Range 15, Township 20
TUCKER, A.B.	NW 1/4 Sec. of Sec. 8, Range 15, Township 19
TUCKER, M.T.	NE 1/4 Sec. of Sec. 7, Range 15, Township 19
TUFSON(TUTSON), A.F.	NW 1/4 Sec. of Sec. 34, Range 13, Township 20
TUPSEAT(TAPSEAT), M.J.	NW 1/4 Sec. of Sec. 10, Range 13, Township 18
TURNER, H.G.	NE 1/4 Sec. of Sec. 25, Range 12, Township 17
TUTON, J.M.	SW 1/4 Sec. of Sec. 11, Range 13, Township 18
TUTSON(TUFSON), A.F.	NW 1/4 Sec. of Sec. 34, Range 13, Township 20
TWISS, C.P.	NE 1/4 Sec. of Sec. 32, Range 13, Township 18
TYLER, J.	SW 1/4 Sec. of Sec. 15, Range 14, Township 19
UPTON, J.S.	NW 1/4 Sec. of Sec. 27, Range 13, Township 18
VAN BLARKOM, D.	SW 1/4 Sec. of Sec. 30, Range 14, Township 20
VAN ZANDT, C.C.	NW 1/4 Sec. of Sec. 14, Range 15, Township 21
VAN ZANT, G.C.	NW 1/4 Sec. of Sec. 13, Range 12, Township 19
VANCE, J.	SW 1/4 Sec. of Sec. 8, Range 12, Township 19
VANCIL, D.	SW 1/4 Sec. of Sec. 25, Range 13, Township 18
VANCIL, I.C.	NW 1/4 Sec. of Sec. 25, Range 13, Township 18
VANDERBILT, J.	SW 1/4 Sec. of Sec. 12, Range 14, Township 21
VAUGHN, F.P.	SE 1/4 Sec. of Sec. 21, Range 13, Township 20
WADE, A.B.	SW 1/4 Sec. of Sec. 24, Range 12, Township 19
WAKEFIELD, J.A.	SW 1/4 Sec. of Sec. 30, Range 12, Township 19
WAKEFIELD, J.S.	NE 1/4 Sec. of Sec. 5, Range 14, Township 20
WAKEFIELD, Judge	NE 1/4 Sec. of Sec. 3, Range 12, Township 19
WAKEFIELD, N.	NE 1/4 Sec. of Sec. 27, Range 14, Township 20
WAKEFIELD, W.H.T.	SW 1/4 Sec. of Sec. 26, Range 12, Township 18
WALKER, Capt.	SW 1/4 Sec. of Sec. 25, Range 12, Township 18
WALLACE, J.M.	SW 1/4 Sec. of Sec. 10, Range 13, Township 20
WALLER, L.	NE 1/4 Sec. of Sec. 17, Range 13, Township 20
WALTER, J.	NE 1/4 Sec. of Sec. 4, Range 14, Township 20
WALTON, T.R.	SW 1/4 Sec. of Sec. 27, Range 13, Township 18
WARD, C.W.	NE 1/4 Sec. of Sec. 14, Range 13, Township 18
WARD, J.M.	SW 1/4 Sec. of Sec. 3, Range 14, Township 19
WARDEN, L.J.	NW 1/4 Sec. of Sec. 35, Range 12, Township 19
WARREN, J.	NW 1/4 Sec. of Sec. 15, Range 12, Township 18
WASHBURN(?), A.	NE 1/4 Sec. of Sec. 4, Range 14, Township 19
WATERMAN, R.H.	NE 1/4 Sec. of Sec. 23, Range 12, Township 19
WELDES, _____	NW 1/4 Sec. of Sec. 36, Range 12, Township 19
WELL, W.S.	NW 1/4 Sec. of Sec. 14, Range 14, Township 19
WELLS, A.W.	SE 1/4 Sec. of Sec. 13, Range 12, Township 17
WELLS, Geo.	SW 1/4 Sec. of Sec. 29, Range 13, Township 20
WELLS, T.	NE 1/4 Sec. of Sec. 14, Range 14, Township 20
WESTOVER, J.	SW 1/4 Sec. of Sec. 29, Range 13, Township 20
WETHERBEE(WETHERBER), A.	SE 1/4 Sec. of Sec. 36, Range 12, Township 19
WETHERBER(WETHERBEE), A.	SE 1/4 Sec. of Sec. 36, Range 12, Township 19
WHETSON, J.	SE 1/4 Sec. of Sec. 15, Range 14, Township 18
WHIPPLE, E.D.	SE 1/4 Sec. of Sec. 10, Range 13, Township 19
WHITE, A.	NW 1/4 Sec. of Sec. 18, Range 13, Township 19
WHITE, F.R.	SE 1/4 Sec. of Sec. 13, Range 15, Township 18
WHITE, J.R.	SE 1/4 Sec. of Sec. 5, Range 13, Township 19
WHITE, S.J.	SW 1/4 Sec. of Sec. 3, Range 13, Township 14
WHITEHOUSE, A.	SW 1/4 Sec. of Sec. 16, Range 15, Township 20
WHITING, P.C.	NE 1/4 Sec. of Sec. 9, Range 11, Township 19
WHITMAN, E.B.	NE 1/4 Sec. of Sec. 27, Range 12, Township 19

DOUGLAS COUNTY ORIGINAL LAND OWNERS

NAME	LEGAL DESCRIPTION
WHITNEY, P.B.	NW 1/4 Sec. of Sec. 9, Range 12, Township 19
WHITNEY, T.L.	SE 1/4 Sec. of Sec. 34, Range 12, Township 19
WILBER, H.	SE 1/4 Sec. of Sec. 27, Range 12, Township 19
WILL, J.	NW 1/4 Sec. of Sec. 32, Range 13, Township 19
WILLIAMS, C.M.	SE 1/4 Sec. of Sec. 19, Range 13, Township 20
WILLIAMS, E.C.	SW 1/4 Sec. of Sec. 4, Range 12, Township 19
WILLIAMS, H.	SE 1/4 Sec. of Sec. 3, Range 14, Township 19
WILLIAMS, J.W.	NW 1/4 Sec. of Sec. 4, Range 13, Township 19
WILLIAMS, N.W.	SW 1/4 Sec. of Sec. 4, Range 14, Township 20
WILLIS, N.	NE 1/4 Sec. of Sec. 12, Range 13, Township 19
WILLIS, S.J.	NW 1/4 Sec. of Sec. 3, Range 13, Township 18
WILSON, J.	NE 1/4 Sec. of Sec. 25, Range 12, Township 19
WINSLOW, E.	NW 1/4 Sec. of Sec. 25, Range 13, Township 20
WINTER, J.R.	SW 1/4 Sec. of Sec. 8, Range 15, Township 20
WINTER, M.S.	NE 1/4 Sec. of Sec. 17, Range 12, Township 19
WINTERS, W.	SE 1/4 Sec. of Sec. 27, Range 14, Township 20
WISWELL, G.C.	NE 1/4 Sec. of Sec. 23, Range 13, Township 18
WITCOMHOUSE(?), A.	SW 1/4 Sec. of Sec. 16, Range 15, Township 20
WOOD, H.	SW 1/4 Sec. of Sec. 14, Range 13, Township 18
WOOD, J.W.	NE 1/4 Sec. of Sec. 16, Range 14, Township 20
WOODARD, D.T.	SW 1/4 Sec. of Sec. 26, Range 13, Township 18
WOODARD, Don	NW 1/4 Sec. of Sec. 10, Range 12, Township 18
WOODARD, L.	SW 1/4 Sec. of Sec. 24, Range 13, Township 18
WOODARD, R.W.	SW 1/4 Sec. of Sec. 34, Range 13, Township 18
WOODARD, T.B.	NW 1/4 Sec. of Sec. 35, Range 13, Township 18
WORNKER, W.	NW 1/4 Sec. of Sec. 4, Range 13, Township 19
WRIGHT, A.C.	SW 1/4 Sec. of Sec. 32, Range 12, Township 19
WRIGHT, C.	SE 1/4 Sec. of Sec. 22, Range 13, Township 18
WRIGHT, F.	NW 1/4 Sec. of Sec. 9, Range 13, Township 18
WRIGHT, W.	NW 1/4 Sec. of Sec. 10, Range 13, Township 19
WULVERTON, T.R.	NE 1/4 Sec. of Sec. 24, Range 13, Township 18
YATES, A.	NE 1/4 Sec. of Sec. 18, Range 13, Township 19
YATES, W.	NE 1/4 Sec. of Sec. 21, Range 12, Township 19
YOGER, J.	NW 1/4 Sec. of Sec. 6, Range 12, Township 17
ZINN, G.W.	NE 1/4 Sec. of Sec. 4, Range 12, Township 18

PIONEER CEMETERY IN BALDWIN

Submitted by Richard Wellman

PIONEER CEMETERY - BALDWIN CITY, KS

Documentation & Research

The Pioneer Cemetery contains the remains of many of the earliest settlers to the Baldwin area. There has been no interments since 1920, so many of the families of the deceased are no longer in the immediate area to maintain oversight of the graves. As you can see from the following table, most of the burials were during the earliest history of the area.

BURIALS BY DECADE

1850's	5	1890's	9
1860's	65	1900's	8
1870's	29	1910's	3
1880's	16	1920's	1

Some research has been done at several times in the past to document the burials in Pioneer Cemetery, but some of that information is no longer readily available. The copy of the original plot map of the cemetery is at the Baldwin Public Library.

The deterioration of many of the tombstones through erosion and vandalism is taking its toll. It has become obvious that photographing all the tombstones is a way of retaining the information contained thereon, even if the tombstone were to disappear. This work has been completed and a copy each of these photographs is now available at the Baldwin City Library.

In 1969, the administration of the cemetery was assumed by the Oakwood Cemetery Board. Because there was no documentation as to exact locations of the burials, the "lost tombstones" were gathered and placed into a row at the front of the cemetery. This was a nice gesture, but it would have been nice if a more detailed cemetery lay-out would have permitted restoration of the tombstones at the site of the original burial. By mapping all the tombstones and determining the lot locations for all remaining tombstones, it is hoped that any future need to identify burial locations will permit re-installation of the stone very near the original location.

During the more intensive effort to photograph and locate the tombstones, we have found 6 tombstones that were reported as lost and two additional interments that did not show up on any previous list of burials at Pioneer Cemetery. Unfortunately, we also found that 2 stones previously on lists, could no longer be found. The detailed listing that has been created gives a better opportunity to identify any disappearances, and with the photograph, to show the public what is missing and what it looked like.

Gathering information about these pioneers of Baldwin area, permits us to better understand our heritage and share it with future generations. Information about many of these pioneers has been assembled with the photographs, such that researchers may find more than just a name. Civil War service has been identified with 9 of the burials.

BACKGROUND FACTS:

1. **PIONEER CEMETERY CONSISTS OF 20 ACRES (660' X 1320')**
Capable of holding about 6,600 burials

2. **OWNERSHIP**--Kansas Education Assn. of M. E. Church
--Baker University *SUCCESSOR -*
--Baldwin City Cemetery Co., (1989) *QUITCLAIM*
CARE STARTING 1944

PURCHASED 1858
1750 for 40A
CEM. ASSN. FORMED 1866

3. **"SOME" INFORMATION ON LOT OWNERSHIP EXISTS**

4. **FIRST BURIAL WAS MILTON BALDWIN - 30 Aug. 1858** *AGE = 30*
SON OF JOHN

5. **DG. CO. GEN. SOC. "TOMBSTONE CENSUS" BOOK**

- Burials determined in 1940
- update burials as of 1982
- 19 tombstones disappeared from 1940 to 1982

6. **CEMETERY USE DISCONTINUED DUE TO HIGH WATER TABLE**

7. **"BROKEN" AND "DOWN" TOMBSTONES RELOCATED TO A ROW IN FRONT OF CEMETERY - 1969 or 1954 ?**

8. **I HAVE BEEN TOLD THAT CASKETS WERE EXPOSED WHEN THE ROADWAY DITCHES ALONG 1055 WERE WIDENED.**

9. **GRAVES MAY HAVE BEEN RELOCATED TO OAKWOOD**

10. **NEWSPAPERS**

- Prairie City Freedman's Champion, 1857
- Baldwin Criterion, 1883 - 1885
- Baldwin Ledger, 1885 -
- Lawrence Daily Tribune, 1863 - 1881
- Lawrence Kansas State Journal, 1865 - 1869

TREES: W. D. MARTIN ONTD. 1880 - D. 1899 BUR. OAKWOOD

GATE: W. C. MARKHAM 1954

WHERE &/OR HOW TO START?

1. MADE A COPY OF THE CEMETERY PLOT MAP
2. MEASURED & MADE TRANSPARENT LAY-OUT TEMPLATE OF TOMBSTONE LOCATIONS
(Using gatepost and centerline of driveway)
3. OVERLAID TOMBSTONE LOCATION ON PLOT MAP
4. COMPARED LOT OWNERSHIP FAMILY WITH TOMBSTONE SURNAMES
(Picked 3 families in 3 different blocks with known tombstone & lot ownership--Milton Baldwin, Peter Merkel, & Henry Barricklow)
5. CHECKED OTHER MATCHES & ASSURANCE NO TOMBSTONES IN DESIGNATED ROADS
6. DEVELOPED SPREAD-SHEET WITH COMPLETE LOT OWNERSHIP & TOMBSTONE INFO.
7. PHOTO OF EACH STONE

RESULTS

1. FOUND 6 OF THE TOMBSTONES THAT WERE REPORTED AS LOST IN 1982

John Jameson (4-49)	Lilla Nash (N-3)
Mary Frances Fry (2-12)	Ann Pearson (So-16) & prob. 2-02
Manie J. C. Hall ((So-6)	William Pearson (Prob. 2-02) illegible but son owned lot

2. TWO TOMBSTONES NOT ON THE PUBLISHED LIST

Mrs. L. A. Haun (So-9) [& prob. 4-14, owned by Rev. M. M. Haun]
W. E. DODD, (N-9)[Look on back of stones]

3. TWO TOMBSTONES NEWLY IDENTIFIED AS MISSING

Mary G. Gilliland (prob. 3-14)
George McClellan Wood (prev. reported as broken & prob. located 2-19)

4. EARLIEST DATE— George Still, 1855

LORENZO STILL - 1859
MARY (VAUGHN) " - 1859
WM. CHAPMAN - 1859

5. LAST BURIAL — Isaac J. Wilkins, 1920

CATHARINE " , 1914

RESULTS (Continued)

6. NUMBER OF BURIALS WITH TOMBSTONES = 126
(up to 9 on a stone)
NUMBER OF IDENTIFIED BURIALS WITH NO TOMBSTONES = 17
Total = 143

7. NUMBER OF BURIALS (& MEMORIALS) BY DECADE

1850'S = 5	1890'S = 9	Unknown = 7
1860'S = 65	1900'S = 8	
1870'S = 29	1910'S = 3	
1880'S = 16	1920'S = 1	

8. Adult Male = 41 Adult female = 44 child <20 = 54
Unknown = 4

9. ARE THERE OTHERS?? Probably, Godfrey Toothacre, for instance. (d. after 1875 census, age 60)

10. NO LOTS FOUND NEAR ROAD 1055--??

11. LATER FAMILY BURIALS AT OAKWOOD, RELOCATIONS??

1958 ARTICLE OF "BAKER'S DEAD"

TRUSTEES @ PIONEER = 13

VS. 7 @ OAKWOOD + 6 UNKNOWN

MILITARY SERVICE VETERANS?

1. Dobbins, S. B. 14th Wisc. Cav. No dates So-3
2. Duvall, Wm. H. Co. B, 17 Kans. Inf. No dates M-11
3. Jones, Wilson L. Co. H. Post Kans. Inf. d. 19 Dec. 1866 N-8 & 4-27
4. Mierley, Michael Co. K, 16 Kans. Cav. d. 21 July 1905 3-32
5. Prather, Geo. Co. G. 16 Kans. Cav. d. 22 Aug. 1864 4-18
6. Sprague, Shelby Q.M. Sgt. 1 Ks. d. 10 Dec. 1863 5-11
7. Stevens, John Co. H. 2 Kans Cav. No dates N-13
8. Toothaker, George Co.D 2 MO S. M. Cav. d. prob. 19 Mar. 1913 2-11
9. Wilkins, Isaac J. Sgt. Co. B, 12 Kans. Inf. d. 1920 3-17

PERSONS OF INTEREST

1. MILTON BALDWIN, First President of Baker, d. of Typhoid or Congestion of the bowels. Tombstone erected years later by dau.

2. HENRY & MARY BARRICKLOW

Came to Palmyra in 1855, one of 13 founders of Meth. Church & Trustee of Baker. Nine children, oldest William bur. Pioneer. "FOUNDERS OF BAKER"

3. Dr. ANDREW T. STILL FAMILY--

Settled in Palmyra in 1856, son of Dr. Abraham Still. Practiced medicine & founded Osteopathic movement. Donated 1/4 section of land to Baker. Was a surgeon in Civil War in Union Army. Founder of Palmyra. Abraham Still (the father) was responsible for recommending name of college to honor Bishop Baker. Memorial to 1st wife & 7 children (3 in 1864 of spinal meningitis).

4. DANIEL FRY(E)--Came to Palmyra in 1857, m. 1) Mary Frances Toothacre, m. 2) Mary Ann Barricklow BUR. OAKWOOD W. DANIEL (1924)

5. Rev. THOMAS MUDGE — Pastor at Baker, died in his office at the college in 1862.

*6. Rev. ALFRED "WILEY" JONES— started saw mill in Baldwin in 1857. Had 10 children, 7 boys of which 5 served in Union army & 3 died from battlefield wounds. (Contact with living descendant.) RUTH BROOKS

WEB-SITE

7. GEORGE TOOTHAKER--came to Baldwin in 1857 and attended Baker Univ. as one of its first students.

*8. ISAAC WILKINS — came to Baldwin in 1858. He served 3 years 6 mo. in Civil War. He married Catherine Barricklow (dau. of Farrington & Pasty Barricklow) and had 6 children, 4 died in childhood---

Washburn Wilkins, d. 24 Feb. 1861, age 1

Willis Wilkins, d. 9 Mar. 1870, age 3

Lenorah Wilkins, d. 9 Mar. 1870, age 6

Clara A. Wilkins, d. 27 Mar. 1870, age 8

9. MARY S. (PRICE) & EDWIN CARRUTH — TEACHER OF CHEROKEE (1830-1864)
↳ MISSIONARY TO CREEK INDIANS
(1828-1864)

LAWRENCE
JOURNAL-WORLD

Archived stories

Elizabeth Sanders

Thursday, December 4, 2003

Warrensburg, Mo. — Services for Elizabeth Sanders, 87, Warrensburg, will be at 2 p.m. today at Williams Funeral Chapel in Warrensburg. Burial will follow in Sunset Hill Cemetery, Warrensburg.

Mrs. Sanders died Monday, Dec. 1, 2003, at her home.

She was born Sept. 30, 1916, in Lawrence, Kan., the daughter of James Blaine and Hattie Rose Wiggins. She graduated from Lawrence High School in 1934 and received a degree in home economics education in 1938 from Kansas University and a master's degree from Colorado State University.

Mrs. Sanders taught from 1938 to 1948 in Kansas at Matfield Green, Hanover, Oberlin and Harper. She also taught at Kansas State Teacher's College and Central Missouri State University. She had been a 4-H leader, member of El Dorado Saddle Club, West-Central Genealogical Society, Good Neighbors Extension Club, Soil Conservation Society and First Baptist Church.

She married Charles Harold Sanders on Oct. 30, 1948, in Lawrence. He died May 18, 1997.

Survivors include three daughters, Linda McMaster, Peculiar; Ann Brookhart, Durham, N.C., and Marilyn Jessup, Warrensburg; a sister, Bernice Knox, Valley Falls, Kan.; and two grandchildren.

Visitation was Wednesday at the funeral chapel.

The family suggests memorials to Community Rose Garden or West Central Genealogical Society, sent in care of the funeral chapel, 1400 S. Highway 13, Warrensburg 64093.

Copyright © 2003

Visit us at <http://www.ljworld.com>

Archived stories

Albert A. Moore

Monday, November 11, 2002

Graveside services for Albert A. Moore, 85, Lawrence, will be at 2 p.m. Tuesday at Memorial Park Cemetery.

Mr. Moore died Sunday, Nov. 10, 2002, at Select Hospital, Topeka.

He was born Feb. 27, 1917, in Richland, the son of Ira H. and Ellen E. (Simmons) Hillsworth.

He retired from Kansas University as foreman of the maintenance department after 21 years.

He married Mary E. McNish on Feb. 28, 1946, in Lawrence. She survives of the home.

Other survivors include a daughter, Sharon K. Moore, Lawrence; a brother, Ira Moore, Baldwin; and two sisters, Margaret Hout, Lawrence, and Elizabeth Ohse, Carbondale.

Friends may call from noon to 9 p.m. today at Rumsey-Yost Funeral Home, where the family will receive friends from 7 p.m. to 8 p.m. today.

The family suggests memorials to American Diabetes Assn., sent in care of the funeral home.

Online condolences may be sent to www.rumsey-yost-com.

Copyright © 2003

Visit us at <http://www.ljworld.com>

Archived stories

J. Bunker Clark

Sunday, December 28, 2003

Memorial services for J. Bunker Clark, 72, Lawrence, will be at 3 p.m. Friday at Trinity Lutheran Church. Inurnment will be in August on Bois Blanc Island, Mich.

Mr. Clark died Friday, Dec. 26, 2003, at Lawrence Presbyterian Manor.

He was born Oct. 19, 1931, in Detroit, the son of the Rev. George and Cleora (Quist) Clark.

He attended Cass Technical School in Detroit and Cranbrook School in Bloomfield Hills, Mich. He received his bachelor's and master's degrees in music and a doctorate in musicology from the University of Michigan. He was a Fulbright scholar at Cambridge University in England, and he served in the U.S. Army Counter Intelligence Corps in Korea.

Mr. Clark was interim organist at Christ Church Cranbrook and taught music history at Stephens College and Kansas University. He was a harpsichordist and board member of the Lawrence Chamber Orchestra and specialized in American church music of the English Baroque. He was a founding member of the Sonneck Society and active in American Musicological Society, Music Library Assn. and other music organizations.

Survivors include his wife, Marilyn, of their home; and a brother, Thomas D. Clark, Kerrville, Texas; and his kitty, Kocenska.

The family will receive friends from 2:30 p.m. to 4 p.m. Thursday at Warren-McElwain Mortuary.

The family suggest memorials to Trinity Lutheran Church music fund, Lawrence Chamber Orchestra or Hospice Care in Douglas County, sent in care of the mortuary.

Copyright © 2003

Visit us at <http://www.ljworld.com>

Obituaries

Vivian G. Clough

Wednesday, April 30, 2003

Clinton — Graveside services for Vivian G. Clough, 81, Clinton, will be at 11 a.m. Thursday in Clinton Cemetery.

Mrs. Clough died Monday, April 28, 2003, at Lawrence Presbyterian Manor.

She was born March 16, 1922, in Clinton, the daughter of Thomas Henry and Goldie Vivian (Jones) Hout. She graduated from Clinton Grade School in 1936 and Liberty Memorial High School in 1940.

Mrs. Clough was a riveter on B-29s for Boeing in Wichita during World War II. She then worked for Safeway in Lawrence from 1947 to 1953 and was a bus driver for Lawrence schools for 21 years. She and her husband farmed, milked cows and raised Black Angus cattle and Suffolk sheep. She gathered information from tombstones in Douglas County, which was used in a published book, and was the sexton at Clinton Cemetery for many years. She was a lifetime member of Adah Chapter No. 7 Order of Eastern Star in Lawrence and Baldwin, member of two quilting clubs, Lawrence Genealogical Society, Topeka Genealogical Society, Lecompton Historical Society, Kansas State Historical Society, Clinton Historical Society and Union Cemetery Assn. in Kansas City, Kan.

She married LaVere Surber on Oct. 28, 1942. They later divorced. She married Donald Clough on June 21, 1952, in Lawrence. He died Nov. 1, 1976.

Survivors include a sister, Julia Nadine Christie, Clinton, and several nieces and nephews.

Friends may call from noon to 9 p.m. today at Rumsey-Yost Funeral Home.

The family suggests memorials to Clinton Presbyterian Church or the charity of the donor's choice, sent in care of the funeral home.

Copyright © 2003

Visit us at <http://www.ljworld.com>

Obituaries

Kennedy Services

Monday, May 12, 2003

A memorial service for Max D. Kennedy, 78, Lawrence, will be at 2:30 p.m. Tuesday at Alvamar Country Club. Cremation is planned.

Mr. Kennedy died Saturday from complications after an accident at Alvamar Country Club's golf course.

He was born Oct. 10, 1924, in Newman, the son of John R. and Hattie M. (Roper) Kennedy.

Mr. Kennedy graduated from Liberty Memorial High School in 1942 and he attended Trinidad Junior College in Trinidad, Colo. He was a World War II veteran and served in the U.S. Army Air Force as a lieutenant, flight instructor and fighter pilot. He attended Kansas University, where he earned a varsity letter on the football team.

Mr. Kennedy was an amateur golfer for several years and won the Lawrence Country Club championship several times. He turned professional in 1968 and became assistant professional at Alvamar Hills Golf Course. In 1970 he became the head pro at Alvamar and held that position until he retired in 1981. During that time he established an award-winning junior golf program and was a golf instructor.

Mr. Kennedy was a member of the Professional Golfers Assn., the American Legion, Veterans of Foreign Wars and the Benevolent and Protective Order of Eagles.

He married Jacqueline Tuttle on Jan. 16, 1949. She survives of the home.

Other survivors include a brother, Bernard, Lawrence; two sisters, Gaylene Rofkhar, Lake Dabinawa, and Betty Ann Schuler, Lake Jackson, Texas; two sons, Kris, Wichita and Rick, Scottsdale, Ariz.; and four grandchildren.

The family suggests memorials to the Bob Billings Cardiac Observation Unit or to the Douglas County Visiting Nurses Assn., sent in care of Rumsey-Yost Funeral Home. Online condolences can be sent to www.rumsey-yost.com.

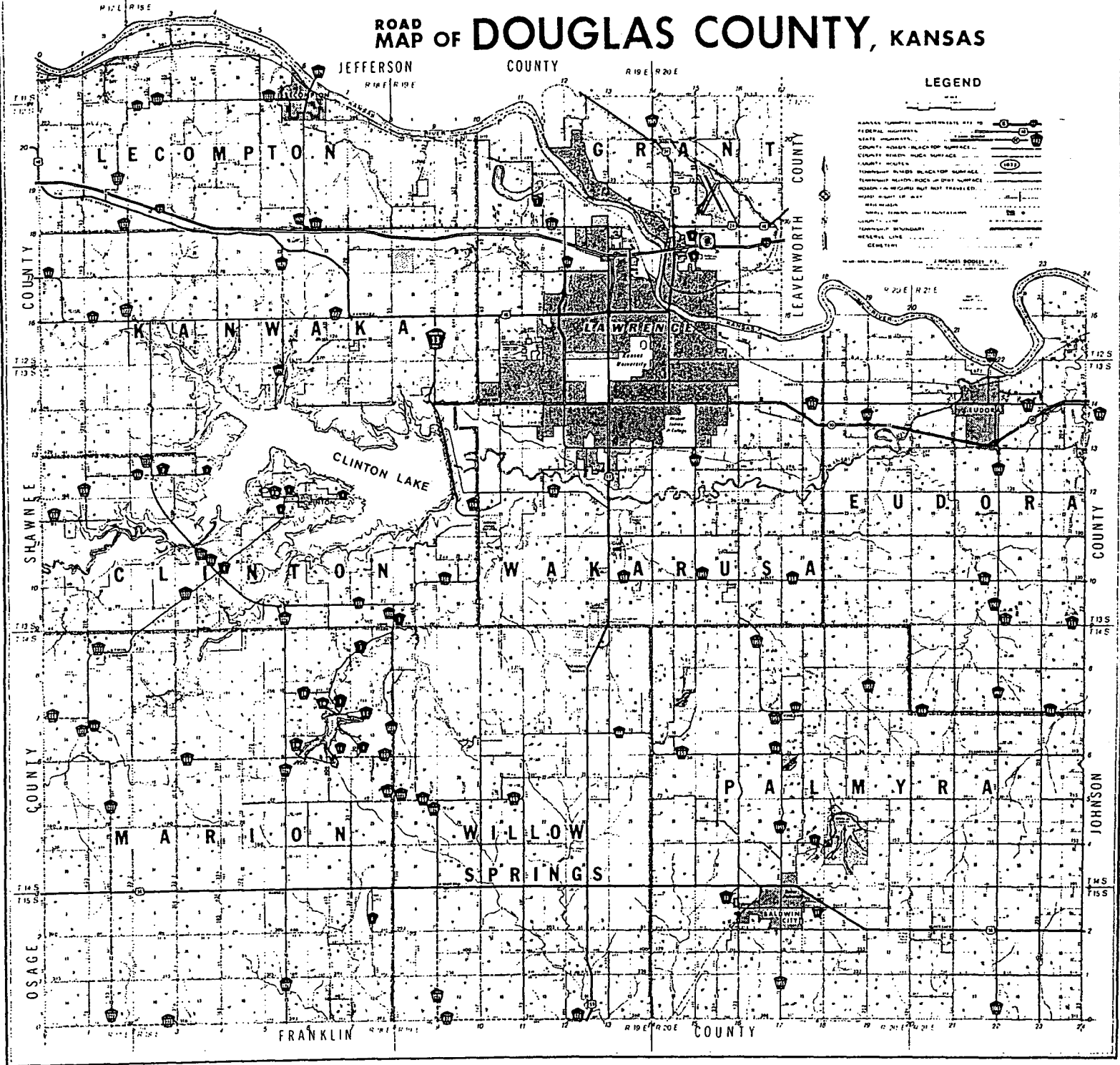
Index Vol 26.

Dg Cty Land Owners are not included in this list.

Albright	19	Dodd	53	McComas	3
Baldwin	51,56	Doe	31,33	McCormick	17
Barber	15,20	Duncan	14,15	McCourt	33
Barricklow	51,56	Duvall	55	MCKim	15
Beck	19	Dyer	12	McMaster	57
Billings	61	Eberhart	12,13	McMillan	15
Blaine	57	Enridge	13	McNish	58
Blake	14	Flory	12,13	Merkel	51
Brander	19	Fry	53,56	Meserve	14
Breck	13	Gangrene	19	Mierley	55
Breckenridge	12,13	Gardner	14	Miles	14,18
Breitenstein	3	Gilliland	53	Moore	13,58
Brogan	19	Gorin	23	Morse	20,21,22
Bromelsick	15	Greenlee	19	Moys	31,32,33
Brookhart	57	Grovenor	15	Mudge	56
Brooks	15	Hall	14,53	Mull	19
Brugen	18	Hammer	19	Nash	53
Bryan	32	Hansen	30	Norris	13
Burnets	19	Harris	6	Oliver	15
Butler	33	Haskell	32	Patterson	12
Campbell	12,13	Haun	53	Pearson	53
Carpenter	20,21,22	Hegeman	12	Pease	15
Carr	19	Herz	19	Petterson	13
Carruth	56	Hiatt	12,13	Pierce	31
Chapman	53	Highley	33	Pierson	15
Christianson	19	Honnold	15	Pilla	19
Christie	60	Hout	60	Plumb	14
Chritensen	3	Huddleston	19	Poehler	14
Clark	2,59	Hume	15	Powell	33
Clinger	14	Jameson	53	Prather	55
Clough	60	Jennings	19	Presgrove	16,17
Cop	19	Jessup	57	Price	56
Cordley	14,22	Jones	55,56	Quantrill	16,20,21
Curtis	19	Kennedy	61	Rankin	20
Dailey	13	Kilworth	15	Robinson	15
Daily	12,13	Knox	57	Rofkhar	61
Daniels	12	Landis	12	Roper	61
Darliing	19	Lang	3	Rushmer	14
Deay	12,13	Learnard	15	Sanders	57
Dicks	20	Lethal	19	Sands	15
Dobbins	55	Lincoln	16	Schaeffer	19
		Loman	19	Schall	14
		Markham	51	Schuler	61
		Martin	51	Shimmons	15
		McCall	12	Simmons	58

Sprague	55
Stadler	19
Stevens	15,55
Still	53,56
Stone	14
Stroup	31
Summerfield	15
Surber	60
Tabor	31,32
Tebbenkamp	33
Thompson	17
Toothacre	54,55,56
Tuckel	12,13
Tuttle	61
Vaughn	53
Vogel	18
Wagner	33
Wagstaff	15
Walton	15
Watson	20
Wellman	2,50
White	20
Wiggins	57
Wilder	19
Wilkins	53,55,56
Williams	12,15
Wilson	55
Wood	53
Woods	16
Woodward	15
Zimmerman	19

ROAD MAP OF DOUGLAS COUNTY, KANSAS



The Pioneer

Douglas County Genealogical Society, Inc.

P.O. Box 3664

Lawrence, Kansas 66046-0664

FORWARDED AND RETURN POSTAGE GUARANTEED
ADDRESS CORRECTION REQUESTED

03
Mary Burchill
1329 Kasold, G1
Lawrence, KS 66049-3426