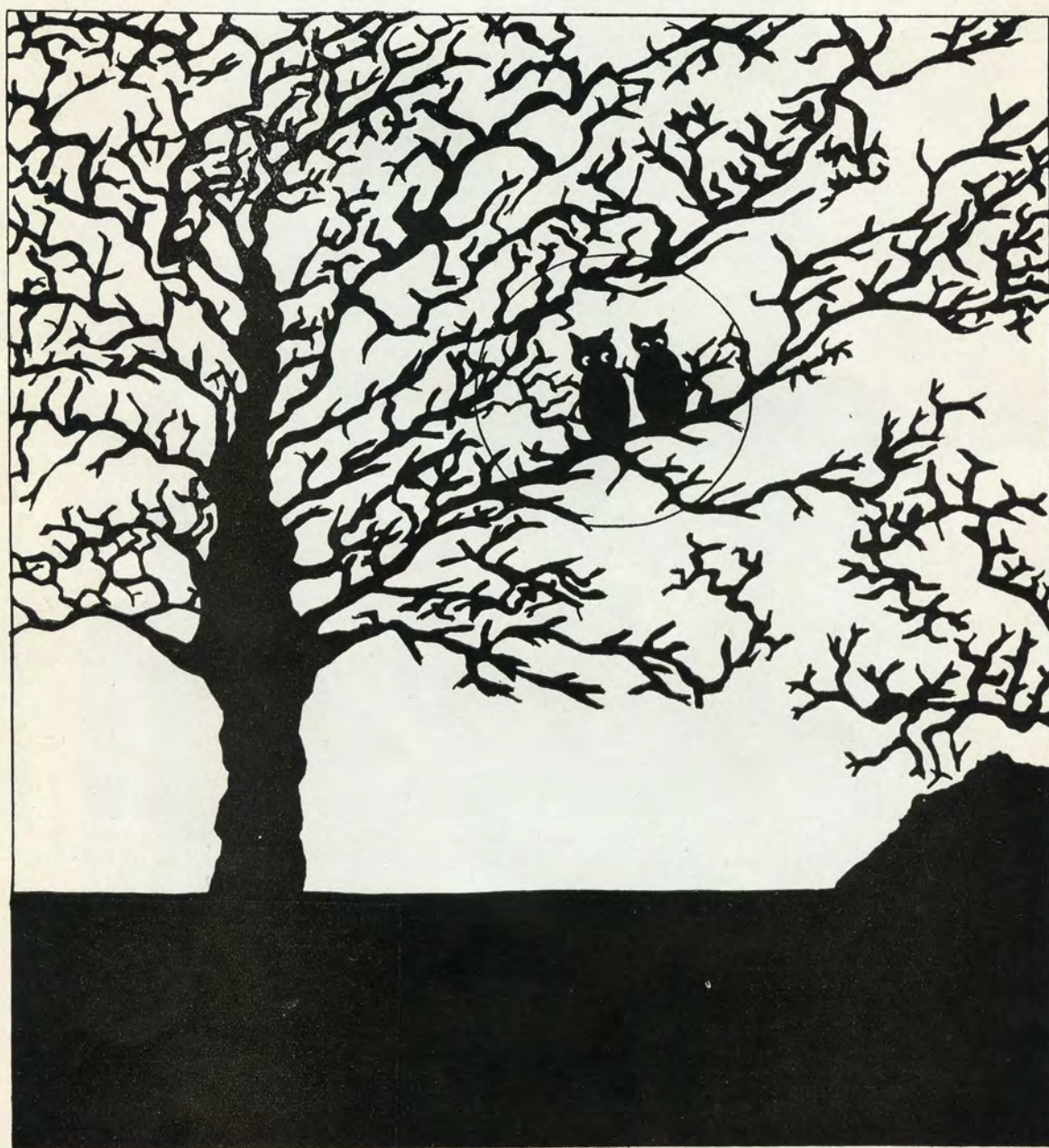


1
3
4
9
2

FACULTY





KATE L. RIGGS
University of Kansas
Graduate Work
University of Berlin
University of Wisconsin
Ethics, French
Dean of Girls
Adviser Girls' Student Council
Y. W. C. A.



MARCIA R. WOOD
Librarian High School
University of Kansas
Social-Science



H. C. RIGGS
University of Kansas
Graduate Work
Chicago University
Physics



L. H. EMMETT
Kansas State Manual
Training Normal
Graduate Work K. U.
Mechanical Drawing
Advisor Hi-Y Student Council

RED AND BLACK



S. EDITH COLE
Lewis Institute
Graduate Work K. U.
Chicago University
Adviser Home Economics Club



ELINOR W. SISSON
Nebraska University
A. M. Minnesota University
Latin
Adviser Y. W. C. A.



MAMIE CLARE WALKER
A. B.; B. S. University of Missouri
Post Graduate M. U.
Normal Training
Adviser Senior Class
Normal Training Club



MILDRED NEWMAN
University of Kansas
Graduate Work K. U.
Mathematics
Adviser O'ita

*With all good wishes
to you -
Martha Rayhill*



MARTHA RAYHILL
A. B. University of Kansas
Pd. M. State Teachers College
Warrensburg, Mo.
Graduate Work K. U.
Chicago University
Mathematics



ERNEST E. BAYLES
University of Kansas
Graduate K. U.
Advisor Sophomore Class
Chemistry



SADIE McMILLAN
Kansas University
Graduate Work
University of Kansas
English



LETA MAUDE HARPER
University of Kansas
Graduate Work K. U.
English
Adviser Dramatic Club



CATHERINE E. McCREATH
A. B. University of Kansas
Graduate Work
University of Kansas
Columbia University
Mathematics
Adviser Junior Class



ELIZABETH KENNEDY
A. B. University of Kansas
Graduate Work K. U.
Chicago University
Latin
Adviser Y. W. C. A. Social
Committee



VERA E. BLACKBURN
Kansas University
Graduate Work K. U.
French, Spanish



E. H. MALLEIS
Pittsburg Normal
Graduate Work
Wisconsin University
Vocational Shop



HARRIET M. STEVENSON
A. B. Kansas University
Domestic Art
Adviser Home Economics Club



C. E. BIRCH
Kansas City Business College
Chicago Correspondence School of Law
Oskaloosa College
Highland Park College (now Des Moines
University).
Supervisor of Penmanship and Com-
mercial Branches



IVAH M. BARRETT
University of Kansas
Graduate Work
Harvard University
University of Kansas
English
Adviser Lolan Society
Red and Black



FLORENCE V. BUTLER
Kansas University
English
Adviser Sophomore Class
Lolan Literary Society

7
3
4
92

RED AND BLACK



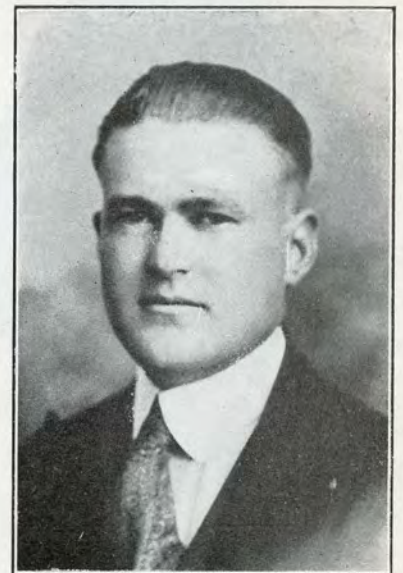
MAX KLEIN
B. S. Kansas State Normal
Athletic Director
Social Science
Advisor Junior Class
Red and Black 1922



LENA VIVIAN MILLER
University of Kansas
Domestic Science
Adviser Home Economics Club



EDNA B. JENSEN
B. Di. Iowa State Teachers College
B. A. Wesleyan University of S. D.
Graduate Work Chicago University
English
Adviser Budget



WM. R. ESSICK
B. S. Kansas State
Agricultural College
Vocational Agriculture
Adviser Agricultural Club

RED AND BLACK



IRMA B. SPANGLER
A. B. University of Kansas
B. S. in Education
A. M. University of Kansas
Social Science



JANE M. GORDON
Tarkio College
Lawrence Business College
Minneapolis Business College
Typewriting, Shorthand



PEARL I. CARPENTER
A. B. Kansas University
Biology, Botany, General Science
Adviser Y. W. C. A. Membership
Committee